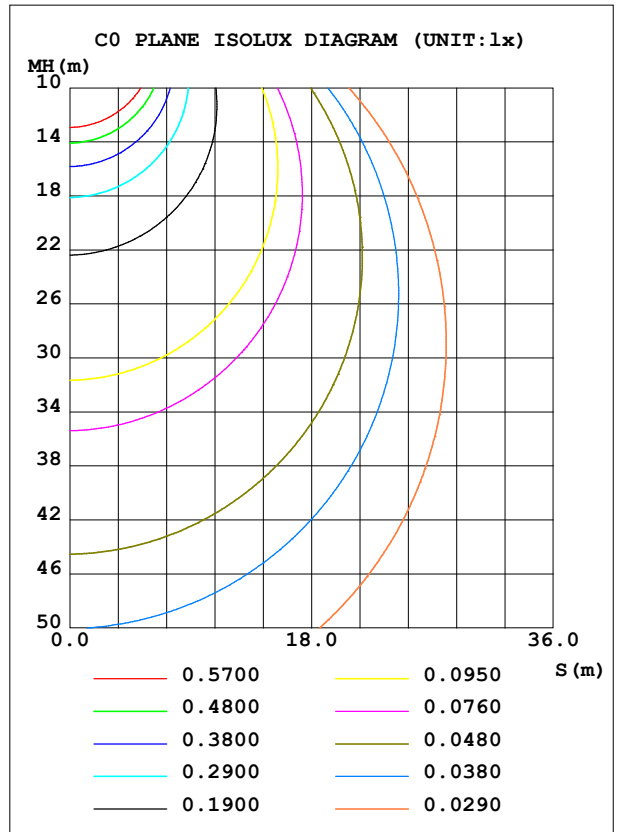
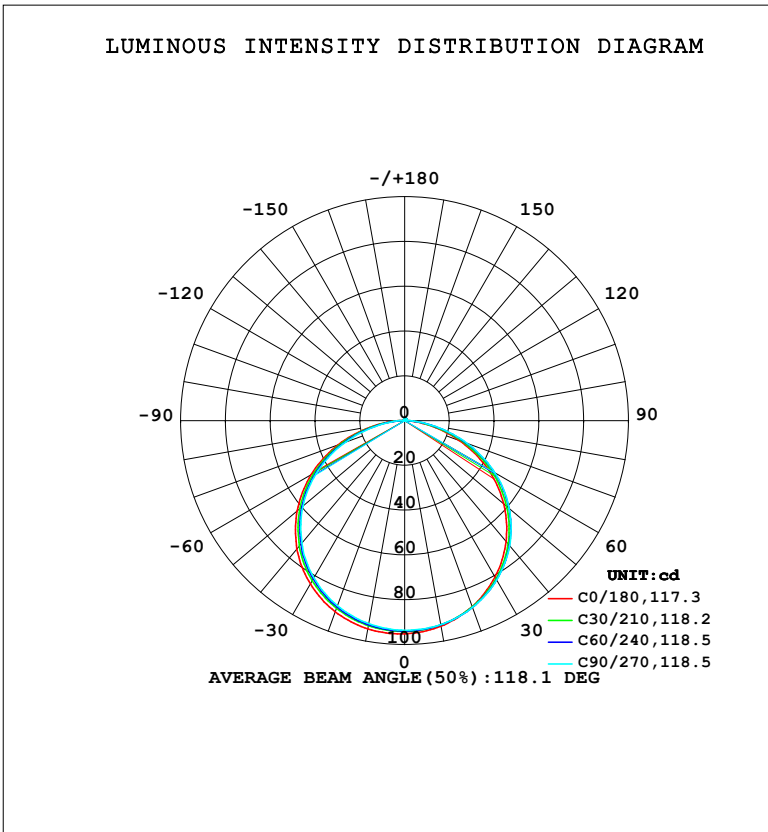


LUMINAIRE PHOTOMETRIC TEST REPORT

NAME: LED Strip	TYPE: Indoor lighting	WEIGHT: 20g
SPEC.: COB LED	DIM.: 500*8*1.9MM	SERIAL No.: 20241224001
MFR.: EVERFINE	SUR.: 500*8MM	Shielding Angle:

DATA OF LAMP		PHOTOMETRIC DATA			
Eff: 76.58 lm/W					
MODEL(WCP)	UR-DL-EP-LD(WW) W	Imax (cd)	95.48	S/MH(C0/180)	1.31
NOMINAL POWER(W)	3.79218	LOR(%)	100.0	S/MH(C90/270)	1.29
RATED VOLTAGE(V)	DC 24	TOTAL FLUX(lm)	290.39	η UP, DN(C0-180)	0.7,49.4
NOMINAL FLUX(lm)	290.392	CIE CLASS	DIRECT	η UP, DN(C180-360)	0.7,49.2
LAMPS INSIDE	1	η up (%)	1.4	CIBSE SHR NOM	1.25
TEST VOLTAGE(V)	DC 24	η down (%)	98.6	CIBSE SHR MAX	1.35



C Range: 0 - 360DEG
 C Interval: 15.0DEG
 Test Speed: HIGH
 Temperature: 25.3°C
 Operators: DAMIN
 Test Date: 2023-09-22

γ Range: 0 - 180DEG
 γ Interval: 1.0DEG
 Test System: EVERFINE GO-2000B_V1 SYSTEM V2.00.471
 Humidity: 65.0%
 Test Distance: 4.880m [K=1.0000]
 Remarks:

ZONAL FLUX DIAGRAM

ZONAL FLUX DIAGRAM:

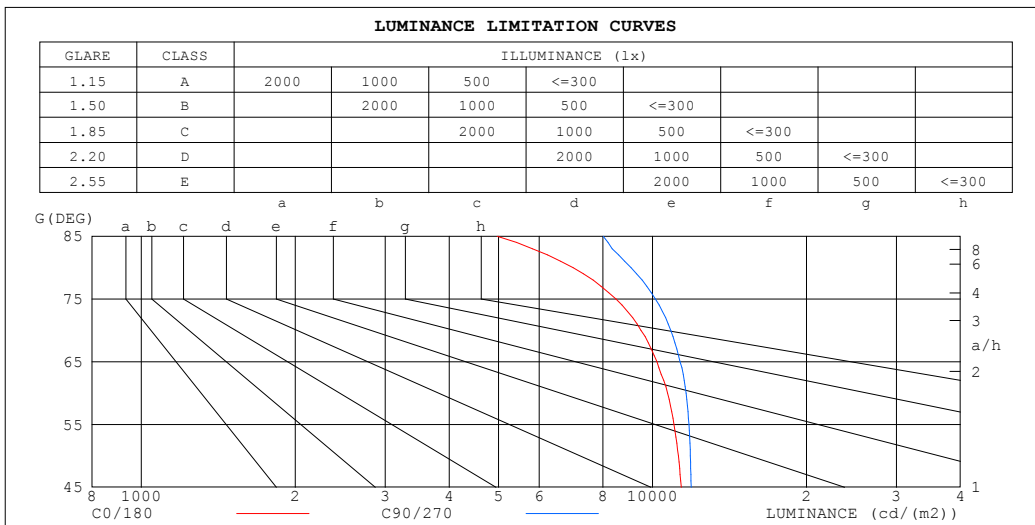
γ	C0	C45	C90	C135	C180	C225	C270	C315	γ	Φ zone	Φ total	%lum,lamp
10	93.20	92.67	92.51	93.15	94.44	92.59	92.09	92.59	0- 10	8.938	8.938	3.08,3.08
20	88.33	88.65	88.73	89.39	90.77	88.60	87.91	88.31	10- 20	25.77	34.71	12,12
30	80.71	81.96	82.21	82.92	84.25	81.89	81.10	81.31	20- 30	39.57	74.29	25.6,25.6
40	70.46	72.31	72.94	73.54	75.00	72.49	71.38	71.61	30- 40	48.59	122.9	42.3,42.3
50	57.75	60.23	60.98	61.40	62.71	60.46	59.29	59.26	40- 50	51.43	174.3	60,60
60	42.80	45.45	46.51	46.75	48.20	45.96	44.70	44.55	50- 60	47.58	221.9	76.4,76.4
70	25.99	28.61	29.69	30.06	31.55	29.30	28.04	27.74	60- 70	37.02	258.9	89.2,89.2
80	9.708	11.70	12.61	12.90	14.23	12.42	11.35	10.85	70- 80	21.43	280.3	96.5,96.5
90	0.5013	1.119	1.223	1.232	1.708	1.377	0.7978	0.8754	80- 90	6.072	286.4	98.6,98.6
100	0.3763	0.3493	0.3383	0.3321	0.3785	0.3505	0.3750	0.3998	90-100	0.5513	287.0	98.8,98.8
110	0.4460	0.4510	0.4385	0.4314	0.4400	0.4570	0.4903	0.4692	100-110	0.4224	287.4	99,99
120	0.5624	0.5711	0.5599	0.5478	0.5577	0.5746	0.6128	0.5844	110-120	0.5073	287.9	99.1,99.1
130	0.6763	0.6888	0.6763	0.6643	0.6729	0.6898	0.7293	0.6996	120-130	0.5630	288.4	99.3,99.3
140	0.7878	0.8040	0.7903	0.7782	0.7832	0.7989	0.8359	0.8111	130-140	0.5745	289.0	99.5,99.5
150	0.8932	0.9106	0.8945	0.8873	0.8898	0.8982	0.9314	0.9104	140-150	0.5335	289.6	99.7,99.7
160	0.9950	1.000	0.9851	0.9853	0.9939	0.9901	1.014	0.9962	150-160	0.4381	290.0	99.9,99.9
170	1.078	1.077	1.062	1.069	1.081	1.067	1.081	1.067	160-170	0.2921	290.3	100,100
180	1.130	1.110	1.108	1.107	1.129	1.108	1.108	1.108	170-180	0.1041	290.4	100,100
DEG	LUMINOUS INTENSITY:cd									UNIT:lm		

C Range: 0 - 360DEG
 C Interval: 15.0DEG
 Test Speed: HIGH
 Temperature:25.3°C
 Operators:DAMIN
 Test Date:2023-09-22

γ Range: 0 - 180DEG
 γ Interval: 1.0DEG
 Test System:EVERFINE GO-2000B_V1 SYSTEM V2.00.471
 Humidity:65.0%
 Test Distance:4.880m [K=1.0000]
 Remarks:

LUMINANCE LIMITATION CURVES

NAME: LED Strip	TYPE: Indoor lighting	WEIGHT: 20g
SPEC.: COB LED	DIM.: 500*8*1.9MM	SERIAL No.: 20241224001
MFR.: EVERFINE	SUR.: 500*8MM	Shielding Angle:



LUMINANCE cd/ (m2)		
G (DEG)	C0/180	C90/270
85	4971	8008
80	6988	9074
75	8477	10136
70	9499	10851
65	10196	11326
60	10699	11628
55	11014	11783
50	11229	11858
45	11384	11896

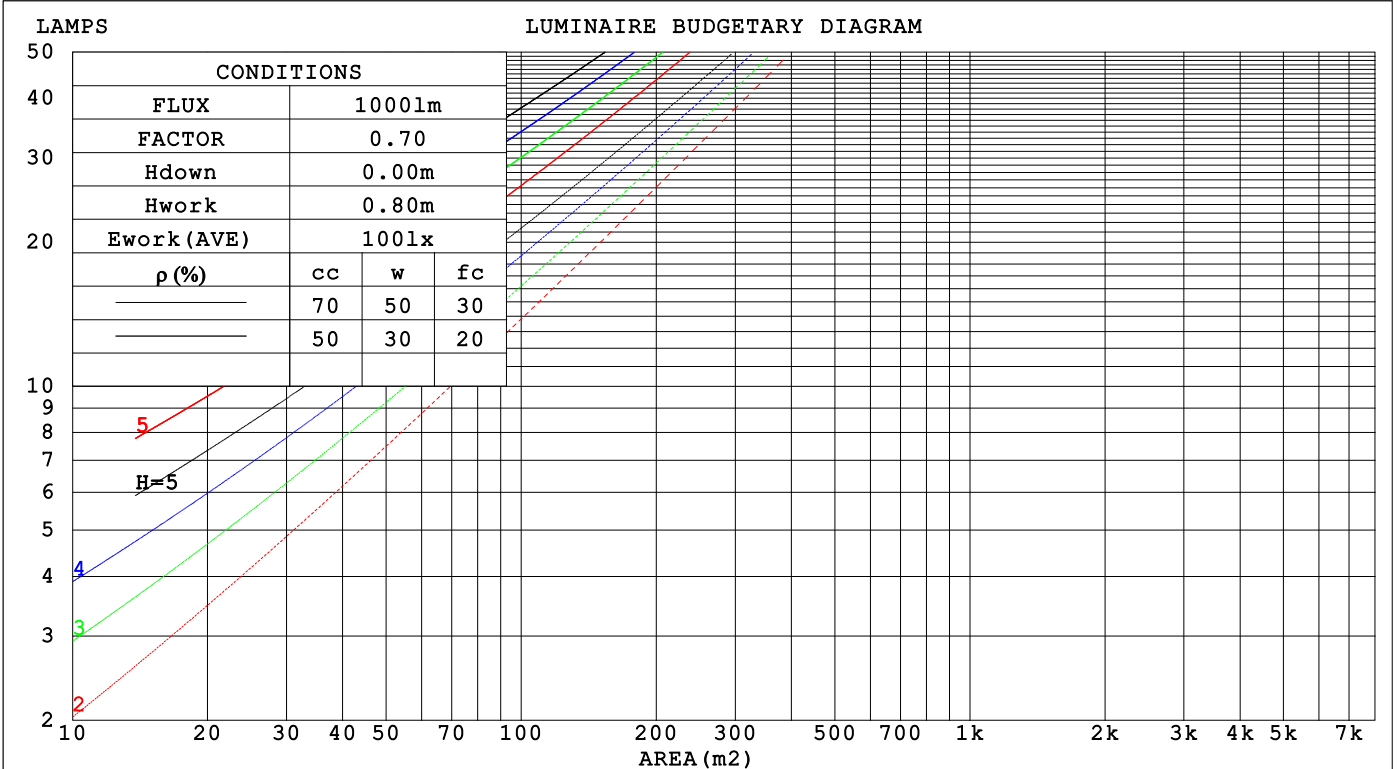
C Range: 0 - 360DEG
 C Interval: 15.0DEG
 Test Speed: HIGH
 Temperature: 25.3°C
 Operators: DAMIN
 Test Date: 2023-09-22

γ Range: 0 - 180DEG
 γ Interval: 1.0DEG
 Test System: EVERFINE GO-2000B_V1 SYSTEM V2.00.471
 Humidity: 65.0%
 Test Distance: 4.880m [K=1.0000]
 Remarks:

CU AND LUMINAIRE BUDGETARY ESTIMATE DIAGRAM

NAME: LED Strip	TYPE: Indoor lighting	WEIGHT: 20g
SPEC.: COB LED	DIM.: 500*8*1.9MM	SERIAL No.: 20241224001
MFR.: EVERFINE	SUR.: 500*8MM	Shielding Angle:

pcc	80%			70%			50%			30%			10%			0
	50%	30%	10%	50%	30%	10%	50%	30%	10%	50%	30%	10%	50%	30%	10%	0
p _w	0															
p _{fc}	0															
RCR	RCR:Room Cavity Ratio															
	Coefficients of Utilization(CU)															
0.0	1.19	1.19	1.19	1.16	1.16	1.16	1.10	1.10	1.10	1.05	1.05	1.05	1.01	1.01	1.01	.99
1.0	1.03	.99	.95	1.01	.97	.93	.96	.93	.90	.92	.89	.87	.88	.86	.84	.82
2.0	.90	.83	.77	.88	.81	.76	.84	.78	.74	.80	.76	.72	.77	.73	.70	.68
3.0	.78	.70	.63	.77	.69	.63	.73	.67	.61	.71	.65	.60	.68	.63	.59	.57
4.0	.69	.60	.53	.68	.59	.53	.65	.58	.52	.63	.56	.51	.60	.55	.50	.48
5.0	.62	.53	.46	.60	.52	.45	.58	.51	.45	.56	.49	.44	.54	.48	.44	.41
6.0	.55	.46	.40	.54	.46	.40	.52	.45	.39	.51	.44	.39	.49	.43	.38	.36
7.0	.50	.41	.35	.49	.41	.35	.48	.40	.34	.46	.39	.34	.45	.38	.34	.32
8.0	.46	.37	.31	.45	.37	.31	.43	.36	.31	.42	.35	.30	.41	.35	.30	.28
9.0	.42	.34	.28	.41	.33	.28	.40	.33	.28	.39	.32	.27	.38	.32	.27	.25
10.0	.39	.31	.25	.38	.30	.25	.37	.30	.25	.36	.29	.25	.35	.29	.25	.23



C Range: 0 - 360DEG
 C Interval: 15.0DEG
 Test Speed: HIGH
 Temperature:25.3°C
 Operators:DAMIN
 Test Date:2023-09-22

γ Range: 0 - 180DEG
 γ Interval: 1.0DEG
 Test System:EVERFINE GO-2000B_V1 SYSTEM V2.00.471
 Humidity:65.0%
 Test Distance:4.880m [K=1.0000]
 Remarks:

WEC AND CCEC

NAME: LED Strip	TYPE: Indoor lighting	WEIGHT: 20g
SPEC.: COB LED	DIM.: 500*8*1.9MM	SERIAL No.: 20241224001
MFR.: EVERFINE	SUR.: 500*8MM	Shielding Angle:

ρ_{cc}	80%			70%			50%			30%			10%			0
ρ_w	50%	30%	10%	50%	30%	10%	50%	30%	10%	50%	30%	10%	50%	30%	10%	0
ρ_{fc}	20%			20%			20%			20%			20%			0
RCR	RCR:Room Cavity Ratio						Wall Exitance Coefficients(WEC)									
0.0																
1.0	.317	.180	.057	.309	.176	.056	.295	.169	.054	.282	.163	.052	.270	.157	.050	
2.0	.297	.163	.050	.290	.160	.049	.278	.154	.048	.266	.149	.047	.256	.145	.046	
3.0	.274	.146	.044	.268	.144	.043	.257	.139	.042	.247	.135	.042	.237	.131	.041	
4.0	.253	.131	.039	.247	.129	.038	.237	.126	.038	.228	.123	.037	.220	.119	.036	
5.0	.233	.119	.034	.228	.117	.034	.220	.114	.034	.211	.112	.033	.204	.109	.033	
6.0	.216	.108	.031	.212	.107	.031	.204	.105	.030	.197	.102	.030	.190	.100	.030	
7.0	.201	.099	.028	.197	.098	.028	.190	.096	.028	.183	.094	.027	.177	.092	.027	
8.0	.187	.092	.026	.184	.091	.026	.178	.089	.025	.172	.087	.025	.166	.085	.025	
9.0	.175	.085	.024	.172	.084	.024	.167	.082	.023	.161	.081	.023	.156	.079	.023	
10.0	.165	.079	.022	.162	.078	.022	.157	.077	.022	.152	.076	.021	.147	.074	.021	

ρ_{cc}	80%			70%			50%			30%			10%			0
ρ_w	50%	30%	10%	50%	30%	10%	50%	30%	10%	50%	30%	10%	50%	30%	10%	0
ρ_{fc}	20%			20%			20%			20%			20%			0
RCR	RCR:Room Cavity Ratio						Ceiling Cavity Exitance Coefficients(CCEC)									
0.0	.201	.201	.201	.172	.172	.172	.117	.117	.117	.067	.067	.067	.022	.022	.022	
1.0	.191	.167	.144	.164	.143	.124	.112	.098	.086	.064	.057	.050	.021	.018	.016	
2.0	.184	.143	.108	.157	.123	.093	.108	.085	.065	.062	.049	.038	.020	.016	.012	
3.0	.176	.125	.084	.151	.108	.073	.104	.075	.051	.060	.044	.030	.019	.014	.010	
4.0	.168	.112	.069	.144	.097	.060	.099	.067	.042	.057	.039	.025	.018	.013	.008	
5.0	.161	.101	.058	.138	.088	.050	.095	.061	.035	.055	.036	.021	.018	.012	.007	
6.0	.154	.093	.050	.132	.081	.043	.091	.056	.031	.053	.033	.018	.017	.011	.006	
7.0	.147	.086	.044	.126	.075	.038	.087	.052	.027	.051	.031	.016	.016	.010	.005	
8.0	.140	.081	.039	.121	.070	.034	.084	.049	.024	.049	.029	.014	.016	.009	.005	
9.0	.134	.076	.036	.116	.066	.031	.080	.046	.022	.047	.027	.013	.015	.009	.004	
10.0	.129	.071	.033	.111	.062	.029	.077	.044	.021	.045	.026	.012	.015	.008	.004	

C Range: 0 - 360DEG
 C Interval: 15.0DEG
 Test Speed: HIGH
 Temperature:25.3°C
 Operators:DAMIN
 Test Date:2023-09-22

γ Range: 0 - 180DEG
 γ Interval: 1.0DEG
 Test System:EVERFINE GO-2000B_V1 SYSTEM V2.00.471
 Humidity:65.0%
 Test Distance:4.880m [K=1.0000]
 Remarks:

UGR(Unified Glare Rating) Table

NAME: LED Strip		TYPE: Indoor lighting					WEIGHT: 20g				
SPEC.: COB LED		DIM.: 500*8*1.9MM					SERIAL No.: 20241224001				
MFR.: EVERFINE		SUR.: 500*8MM					Shielding Angle:				
ceiling/cavity		0.7	0.7	0.5	0.5	0.3	0.7	0.7	0.5	0.5	0.3
walls		0.5	0.3	0.5	0.3	0.3	0.5	0.3	0.5	0.3	0.3
working plane		0.2	0.2	0.2	0.2	0.2	0.2	0.2	0.2	0.2	0.2
Room dimensions		Viewed crosswise					Viewed endwise				
x = 2H y = 2H		25.5	27.0	25.7	27.2	27.4	25.8	27.3	26.1	27.5	27.8
	3H	26.9	28.3	27.3	28.6	28.9	27.4	28.8	27.7	29.1	29.3
	4H	27.5	28.8	27.8	29.1	29.4	28.1	29.4	28.4	29.7	30.0
	6H	27.8	29.1	28.2	29.4	29.7	28.5	29.8	28.9	30.1	30.4
	8H	27.9	29.1	28.3	29.4	29.7	28.7	29.9	29.0	30.2	30.5
	12H	27.9	29.1	28.3	29.4	29.8	28.7	29.9	29.1	30.2	30.6
	4H 2H	26.1	27.5	26.5	27.8	28.0	26.4	27.7	26.7	28.0	28.3
	3H	27.8	29.0	28.2	29.3	29.6	28.2	29.4	28.6	29.7	30.0
	4H	28.4	29.5	28.8	29.9	30.2	29.0	30.0	29.4	30.4	30.7
	6H	28.9	29.9	29.3	30.2	30.6	29.5	30.5	30.0	30.9	31.3
	8H	29.0	29.9	29.5	30.3	30.7	29.7	30.6	30.2	31.0	31.4
	12H	29.1	29.9	29.5	30.3	30.8	29.9	30.7	30.3	31.1	31.5
	8H 4H	28.7	29.6	29.2	30.0	30.4	29.2	30.1	29.6	30.5	30.9
	6H	29.3	30.1	29.8	30.5	31.0	29.9	30.7	30.4	31.1	31.6
	8H	29.5	30.2	30.0	30.6	31.1	30.2	30.9	30.7	31.3	31.8
	12H	29.7	30.2	30.2	30.7	31.2	30.4	31.0	30.9	31.5	32.0
	12H 4H	28.8	29.6	29.2	30.0	30.4	29.2	30.0	29.7	30.4	30.9
	6H	29.4	30.1	29.9	30.5	31.0	30.0	30.6	30.5	31.1	31.6
	8H	29.6	30.2	30.1	30.7	31.2	30.3	30.9	30.8	31.3	31.8
Variations with the observer position at spacings(CIE Pub.117):											
S = 1.0H		+ 0.2 / - 0.2					+ 0.1 / - 0.2				
1.5H		+ 0.2 / - 0.4					+ 0.2 / - 0.3				
2.0H		+ 0.2 / - 0.4					+ 0.2 / - 0.3				

CIE Pub.117, 290.4 lm Total Lamp Luminous Flux Correct (8log(F/F0) = -4.3)
 Area: 0.008 m2

C Range: 0 - 360DEG
 C Interval: 15.0DEG
 Test Speed: HIGH
 Temperature:25.3°C
 Operators:DAMIN
 Test Date:2023-09-22

γ Range: 0 - 180DEG
 γ Interval: 1.0DEG
 Test System:EVERFINE GO-2000B_V1 SYSTEM V2.00.471
 Humidity:65.0%
 Test Distance:4.880m [K=1.0000]
 Remarks:

UTILIZATION FACTORS TABLE

NAME: LED Strip	TYPE: Indoor lighting	WEIGHT: 20g
SPEC.: COB LED	DIM.: 500*8*1.9MM	SERIAL No.: 20241224001
MFR.: EVERFINE	SUR.: 500*8MM	Shielding Angle:

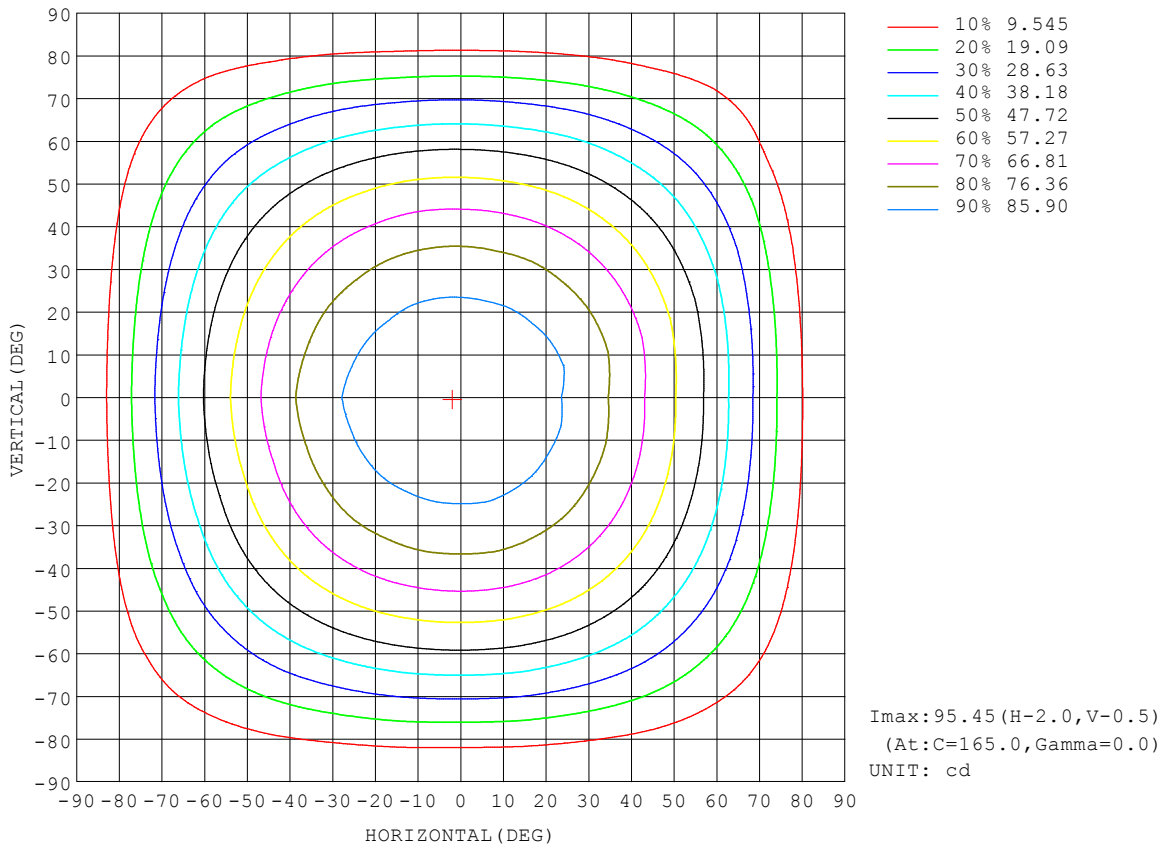
REFLECTANCE										
Ceiling	0.8	0.8	0.8	0.7	0.7	0.7	0.5	0.5	0.5	0
Walls	0.7	0.5	0.3	0.7	0.5	0.3	0.7	0.5	0.3	0
Working plane	0.2	0.2	0.2	0.2	0.2	0.2	0.2	0.2	0.2	0
ROOM INDEX	UTILIZATION FACTORS (PERCENT) $k(RI) \times RCR = 5$									
$k = 0.60$	56	44	37	55	44	37	54	44	37	30
0.80	66	54	47	65	54	47	63	53	46	39
1.00	75	63	56	73	63	56	71	64	55	48
1.25	82	71	64	80	70	63	77	69	62	55
1.50	87	77	70	85	76	69	82	74	68	60
2.00	94	85	78	92	84	78	88	81	76	68
2.50	98	90	84	96	88	83	92	86	81	72
3.00	101	94	89	99	93	87	95	89	85	76
4.00	105	100	95	103	98	93	98	94	90	81
5.00	108	103	99	105	101	97	101	97	94	84
ROOM INDEX	UF(total)									Direct
According to DIN EN 13032-2 2004			Suspended				SHRNOM = 1.25			

C Range: 0 - 360DEG
 C Interval: 15.0DEG
 Test Speed: HIGH
 Temperature: 25.3°C
 Operators: DAMIN
 Test Date: 2023-09-22

γ Range: 0 - 180DEG
 γ Interval: 1.0DEG
 Test System: EVERFINE GO-2000B_V1 SYSTEM V2.00.471
 Humidity: 65.0%
 Test Distance: 4.880m [K=1.0000]
 Remarks:

ISOCANDELA DIAGRAM

NAME: LED Strip	TYPE: Indoor lighting	WEIGHT: 20g
SPEC.: COB LED	DIM.: 500*8*1.9MM	SERIAL No.: 20241224001
MFR.: EVERFINE	SUR.: 500*8MM	Shielding Angle:

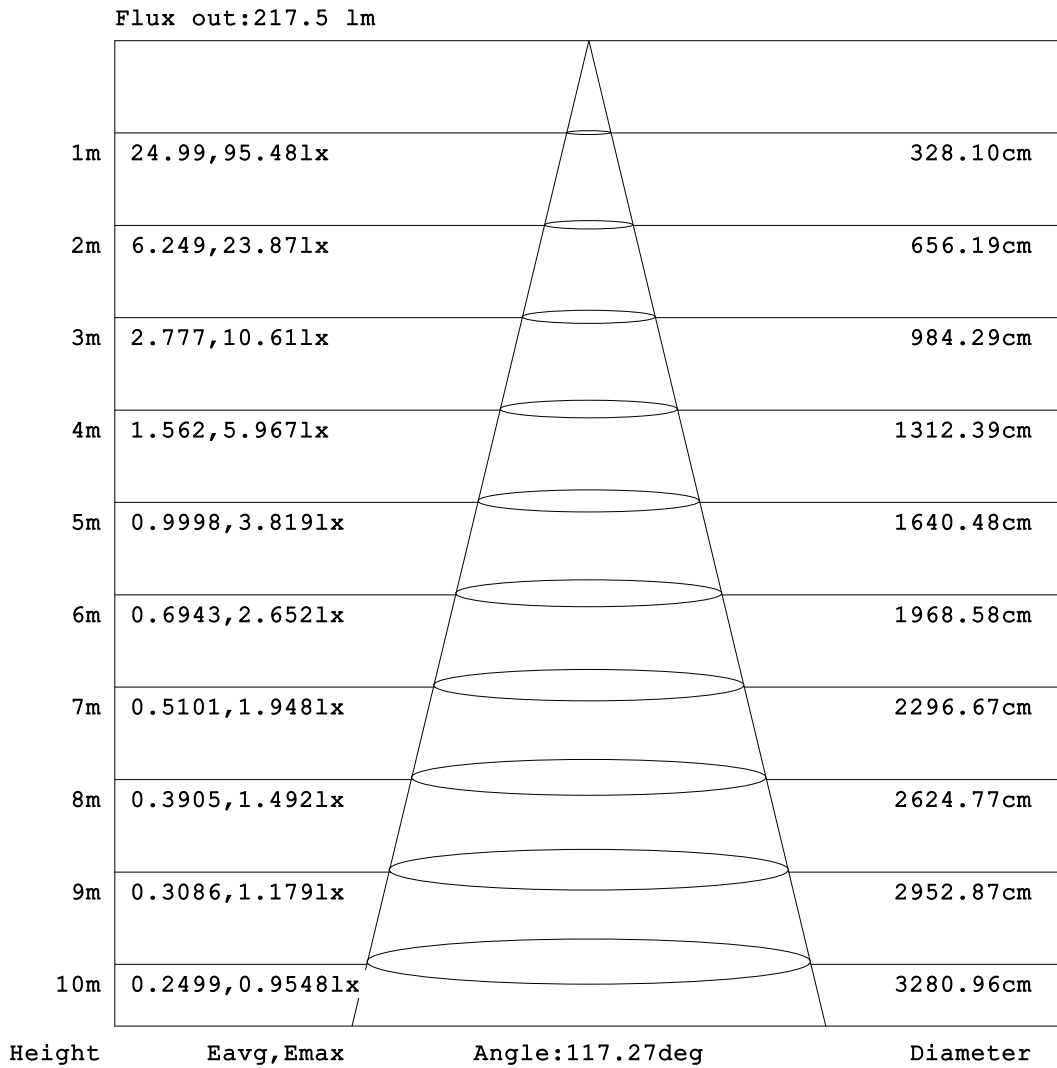


C Range: 0 - 360DEG
 C Interval: 15.0DEG
 Test Speed: HIGH
 Temperature: 25.3°C
 Operators: DAMIN
 Test Date: 2023-09-22

γ Range: 0 - 180DEG
 γ Interval: 1.0DEG
 Test System: EVERFINE GO-2000B_V1 SYSTEM V2.00.471
 Humidity: 65.0%
 Test Distance: 4.880m [K=1.0000]
 Remarks:

AAI Figure

NAME: LED Strip	TYPE: Indoor lighting	WEIGHT: 20g
SPEC.: COB LED	DIM.: 500*8*1.9MM	SERIAL No.: 20241224001
MFR.: EVERFINE	SUR.: 500*8MM	Shielding Angle:



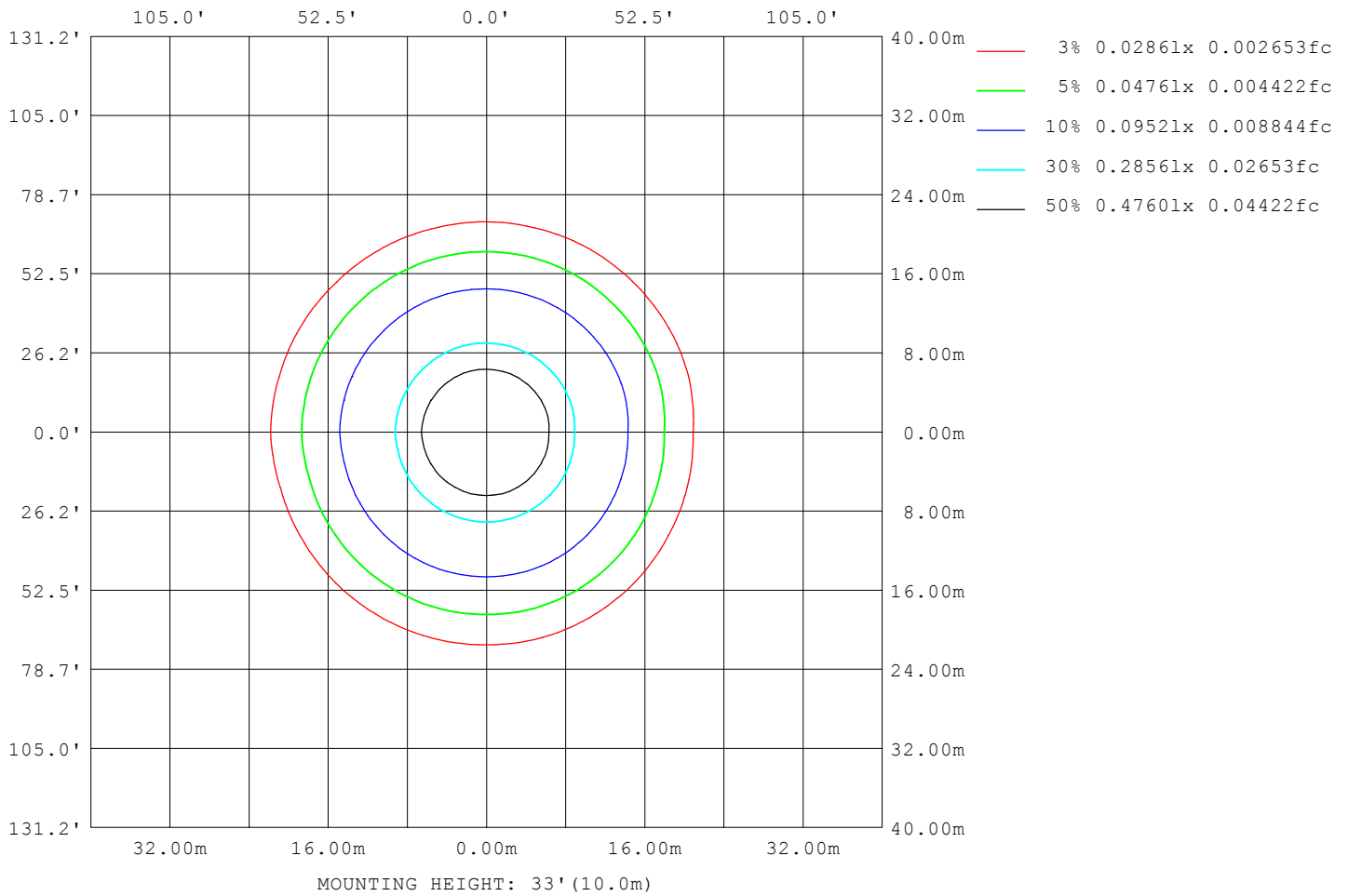
Note: The Curves indicate the illuminated area and the average illumination when the luminaire is at different distance.

C Range: 0 - 360DEG
 C Interval: 15.0DEG
 Test Speed: HIGH
 Temperature: 25.3°C
 Operators: DAMIN
 Test Date: 2023-09-22

γ Range: 0 - 180DEG
 γ Interval: 1.0DEG
 Test System: EVERFINE GO-2000B_V1 SYSTEM V2.00.471
 Humidity: 65.0%
 Test Distance: 4.880m [K=1.0000]
 Remarks:

ISOLUX DIAGRAM

NAME: LED Strip	TYPE: Indoor lighting	WEIGHT: 20g
SPEC.: COB LED	DIM.: 500*8*1.9MM	SERIAL No.: 20241224001
MFR.: EVERFINE	SUR.: 500*8MM	Shielding Angle:



C Range: 0 - 360DEG
 C Interval: 15.0DEG
 Test Speed: HIGH
 Temperature: 25.3°C
 Operators: DAMIN
 Test Date: 2023-09-22

γ Range: 0 - 180DEG
 γ Interval: 1.0DEG
 Test System: EVERFINE GO-2000B_V1 SYSTEM V2.00.471
 Humidity: 65.0%
 Test Distance: 4.880m [K=1.0000]
 Remarks:

LED Avg.L Report

NAME: LED Strip	TYPE: Indoor lighting	WEIGHT: 20g
SPEC.: COB LED	DIM.: 500*8*1.9MM	SERIAL No.: 20241224001
MFR.: EVERFINE	SUR.: 500*8MM	Shielding Angle:

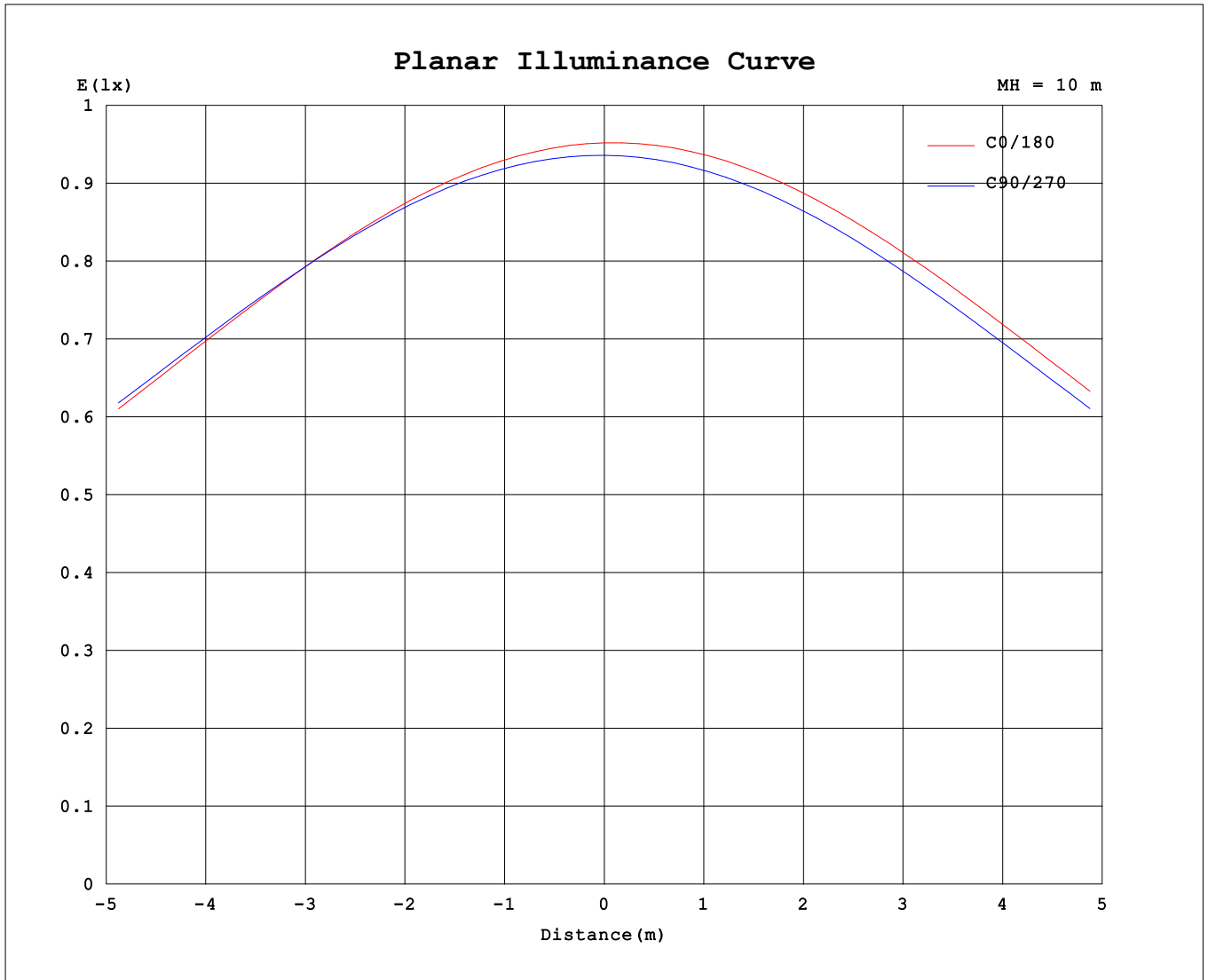
AvgL	cd/m2
L_0~180 (65) av	11029
L_0~180 (75) av	9745
L_0~180 (85) av	7284
L_90~270 (65) av	11073
L_90~270 (75) av	9771
L_90~270 (85) av	7434
L_45 (65) av	11076
L_45 (75) av	9805
L_45 (85) av	7249

Standard: GB/T 29293-2012

C Range: 0 - 360DEG
 C Interval: 15.0DEG
 Test Speed: HIGH
 Temperature:25.3°C
 Operators:DAMIN
 Test Date:2023-09-22

γ Range: 0 - 180DEG
 γ Interval: 1.0DEG
 Test System:EVERFINE GO-2000B_V1 SYSTEM V2.00.471
 Humidity:65.0%
 Test Distance:4.880m [K=1.0000]
 Remarks:

Planar Illuminance Curve



C Range: 0 - 360DEG
 C Interval: 15.0DEG
 Test Speed: HIGH
 Temperature: 25.3°C
 Operators: DAMIN
 Test Date: 2023-09-22

γ Range: 0 - 180DEG
 γ Interval: 1.0DEG
 Test System: EVERFINE GO-2000B_V1 SYSTEM V2.00.471
 Humidity: 65.0%
 Test Distance: 4.880m [K=1.0000]
 Remarks:

LUMINOUS DISTRIBUTION INTENSITY DATA

NAME: LED Strip	TYPE: Indoor lighting	WEIGHT: 20g
SPEC.: COB LED	DIM.: 500*8*1.9MM	SERIAL No.: 20241224001
MFR.: EVERFINE	SUR.: 500*8MM	Shielding Angle:

Table--1

UNIT: cd

C (DEG) \ γ (DEG)	0	15	30	45	60	75	90	105	120	135	150	165	180	195	210	225	240	255	270
0	95.2	94.9	94.1	93.9	93.9	93.8	93.6	93.6	93.9	94.2	94.8	95.5	95.2	94.9	94.1	93.9	93.9	93.8	93.6
5	94.6	94.5	93.7	93.6	93.6	93.6	93.4	93.4	93.6	94.0	94.6	95.2	95.2	94.7	93.9	93.6	93.6	93.4	93.2
10	93.2	93.3	92.7	92.7	92.7	92.7	92.5	92.6	92.8	93.2	93.7	94.2	94.4	93.8	93.0	92.6	92.6	92.4	92.1
15	91.1	91.4	90.9	91.0	91.0	91.2	91.0	91.1	91.2	91.6	92.1	92.6	93.0	92.2	91.4	90.9	90.9	90.6	90.3
20	88.3	88.8	88.5	88.7	88.7	88.9	88.7	88.9	89.0	89.4	89.8	90.2	90.8	89.8	89.1	88.6	88.5	88.2	87.9
25	84.8	85.4	85.4	85.6	85.7	86.0	85.8	86.0	86.1	86.5	86.8	87.1	87.9	86.8	86.2	85.6	85.4	85.1	84.8
30	80.7	81.5	81.6	82.0	82.1	82.4	82.2	82.4	82.5	82.9	83.1	83.4	84.2	83.2	82.6	81.9	81.7	81.4	81.1
35	75.9	76.8	77.1	77.6	77.8	78.1	77.9	78.1	78.2	78.6	78.7	79.0	79.9	78.9	78.3	77.5	77.3	77.0	76.7
40	70.5	71.2	71.9	72.3	72.8	73.1	72.9	73.1	73.2	73.5	73.6	73.8	75.0	73.9	73.2	72.5	72.0	71.9	71.4
45	64.4	65.2	66.0	66.6	67.1	67.3	67.3	67.4	67.6	67.7	67.8	68.0	69.0	68.2	67.4	66.8	66.2	66.1	65.7
50	57.7	58.6	59.4	60.2	60.8	61.0	61.0	61.1	61.3	61.4	61.4	61.6	62.7	61.9	61.1	60.5	59.9	59.7	59.3
55	50.5	51.3	52.3	53.1	53.9	54.1	54.1	54.2	54.3	54.4	54.4	54.5	55.7	55.0	54.2	53.5	52.9	52.6	52.3
60	42.8	43.6	44.6	45.4	46.3	46.5	46.5	46.6	46.8	46.7	46.8	46.9	48.2	47.5	46.7	46.0	45.4	45.0	44.7
65	34.5	35.4	36.2	37.2	37.9	38.4	38.3	38.5	38.5	38.6	38.6	38.7	40.1	39.3	38.7	37.7	37.4	36.7	36.6
70	26.0	26.9	27.6	28.6	29.2	29.8	29.7	30.0	29.9	30.1	29.9	30.1	31.5	30.8	30.3	29.3	28.9	28.2	28.0
75	17.6	18.4	19.0	20.0	20.5	21.1	21.0	21.3	21.2	21.4	21.2	21.3	22.8	22.1	21.6	20.7	20.3	19.6	19.5
80	9.71	10.4	10.8	11.7	12.1	12.7	12.6	12.9	12.8	12.9	12.6	12.8	14.2	13.6	13.2	12.4	12.1	11.5	11.3
85	3.47	3.97	4.31	4.89	5.20	5.60	5.58	5.84	5.63	5.65	5.39	5.45	6.69	6.21	6.02	5.42	5.23	4.79	4.78
90	0.50	0.67	0.85	1.12	1.28	1.45	1.22	1.50	1.35	1.23	1.02	0.99	1.71	1.57	1.59	1.38	1.33	1.23	0.80
95	0.40	0.39	0.41	0.41	0.40	0.32	0.33	0.51	0.36	0.38	0.36	0.36	0.63	0.58	0.53	0.41	0.37	0.37	0.36
100	0.38	0.38	0.37	0.35	0.34	0.34	0.34	0.35	0.34	0.33	0.33	0.34	0.38	0.36	0.35	0.35	0.37	0.38	0.38
105	0.39	0.40	0.38	0.39	0.38	0.39	0.38	0.38	0.37	0.38	0.36	0.38	0.38	0.38	0.40	0.39	0.41	0.41	0.43
110	0.45	0.45	0.44	0.45	0.44	0.44	0.44	0.44	0.42	0.43	0.42	0.43	0.44	0.44	0.45	0.46	0.47	0.47	0.49
115	0.50	0.51	0.50	0.51	0.50	0.51	0.50	0.50	0.48	0.49	0.48	0.49	0.50	0.50	0.51	0.51	0.53	0.54	0.55
120	0.56	0.57	0.56	0.57	0.56	0.57	0.56	0.56	0.54	0.55	0.53	0.54	0.56	0.55	0.57	0.57	0.59	0.59	0.61
125	0.62	0.63	0.62	0.63	0.62	0.63	0.62	0.62	0.60	0.61	0.59	0.60	0.62	0.61	0.63	0.63	0.65	0.65	0.67
130	0.68	0.69	0.68	0.69	0.68	0.69	0.68	0.68	0.66	0.66	0.65	0.66	0.67	0.67	0.69	0.69	0.71	0.71	0.73
135	0.73	0.75	0.74	0.75	0.73	0.75	0.74	0.74	0.72	0.72	0.71	0.72	0.73	0.72	0.75	0.74	0.77	0.77	0.78
140	0.79	0.81	0.79	0.80	0.79	0.80	0.79	0.79	0.77	0.78	0.76	0.77	0.78	0.78	0.80	0.80	0.82	0.82	0.84
145	0.84	0.86	0.85	0.86	0.84	0.85	0.84	0.85	0.83	0.83	0.82	0.83	0.84	0.83	0.85	0.85	0.87	0.87	0.89
150	0.89	0.92	0.90	0.91	0.89	0.91	0.89	0.90	0.88	0.89	0.87	0.88	0.89	0.88	0.90	0.90	0.92	0.92	0.93
155	0.95	0.96	0.95	0.96	0.94	0.95	0.94	0.95	0.93	0.94	0.92	0.93	0.94	0.93	0.95	0.95	0.96	0.96	0.98
160	0.99	1.01	0.99	1.00	0.99	1.00	0.99	0.99	0.98	0.99	0.97	0.98	0.99	0.98	0.99	0.99	1.01	1.00	1.01
165	1.04	1.05	1.03	1.04	1.03	1.04	1.03	1.04	1.02	1.03	1.01	1.03	1.04	1.02	1.04	1.03	1.05	1.04	1.05
170	1.08	1.09	1.07	1.08	1.06	1.07	1.06	1.07	1.06	1.07	1.06	1.07	1.08	1.06	1.07	1.07	1.08	1.07	1.08
175	1.11	1.11	1.10	1.10	1.09	1.10	1.09	1.10	1.09	1.10	1.09	1.11	1.11	1.09	1.10	1.09	1.11	1.09	1.11
180	1.13	1.12	1.11	1.11	1.11	1.11	1.11	1.11	1.11	1.11	1.11	1.11	1.13	1.11	1.12	1.11	1.11	1.11	1.11

C Range: 0 - 360DEG
 C Interval: 15.0DEG
 Test Speed: HIGH
 Temperature: 25.3°C
 Operators: DAMIN
 Test Date: 2023-09-22

γ Range: 0 - 180DEG
 γ Interval: 1.0DEG
 Test System: EVERFINE GO-2000B_V1 SYSTEM V2.00.471
 Humidity: 65.0%
 Test Distance: 4.880m [K=1.0000]
 Remarks:

LUMINOUS DISTRIBUTION INTENSITY DATA

NAME: LED Strip	TYPE: Indoor lighting	WEIGHT: 20g
SPEC.: COB LED	DIM.: 500*8*1.9MM	SERIAL No.: 20241224001
MFR.: EVERFINE	SUR.: 500*8MM	Shielding Angle:

Table--2

UNIT: cd

C (DEG) \ γ (DEG)	285	300	315	330	345														
0	93.6	93.9	94.2	94.8	95.5														
5	93.2	93.4	93.7	94.4	95.0														
10	92.1	92.3	92.6	93.2	93.9														
15	90.3	90.5	90.8	91.4	91.9														
20	87.8	88.1	88.3	88.9	89.3														
25	84.7	85.0	85.2	85.6	86.0														
30	80.9	81.3	81.3	81.7	82.0														
35	76.5	76.8	76.8	77.2	77.3														
40	71.4	71.5	71.6	71.7	71.9														
45	65.6	65.7	65.7	65.9	66.0														
50	59.2	59.3	59.3	59.4	59.4														
55	52.2	52.3	52.2	52.3	52.2														
60	44.6	44.7	44.5	44.6	44.6														
65	36.4	36.5	36.2	36.4	36.2														
70	27.9	27.9	27.7	27.9	27.7														
75	19.4	19.4	19.1	19.3	19.2														
80	11.5	11.3	10.9	11.1	9.27														
85	4.63	4.54	4.26	4.38	3.29														
90	1.09	1.05	0.88	0.67	0.65														
95	0.48	0.39	0.47	0.44	0.44														
100	0.36	0.40	0.40	0.42	0.44														
105	0.41	0.42	0.41	0.43	0.44														
110	0.47	0.48	0.47	0.48	0.48														
115	0.54	0.54	0.53	0.54	0.52														
120	0.60	0.60	0.58	0.59	0.58														
125	0.66	0.66	0.64	0.65	0.63														
130	0.71	0.72	0.70	0.71	0.69														
135	0.77	0.77	0.76	0.77	0.75														
140	0.82	0.83	0.81	0.82	0.81														
145	0.87	0.88	0.86	0.87	0.86														
150	0.92	0.92	0.91	0.92	0.91														
155	0.96	0.97	0.96	0.97	0.96														
160	1.00	1.01	1.00	1.01	1.00														
165	1.04	1.05	1.03	1.05	1.04														
170	1.07	1.08	1.07	1.08	1.07														
175	1.09	1.10	1.09	1.11	1.10														
180	1.11	1.11	1.11	1.11	1.11														

C Range: 0 - 360DEG
 C Interval: 15.0DEG
 Test Speed: HIGH
 Temperature:25.3°C
 Operators:DAMIN
 Test Date:2023-09-22

γ Range: 0 - 180DEG
 γ Interval: 1.0DEG
 Test System:EVERFINE GO-2000B_V1 SYSTEM V2.00.471
 Humidity:65.0%
 Test Distance:4.880m [K=1.0000]
 Remarks: