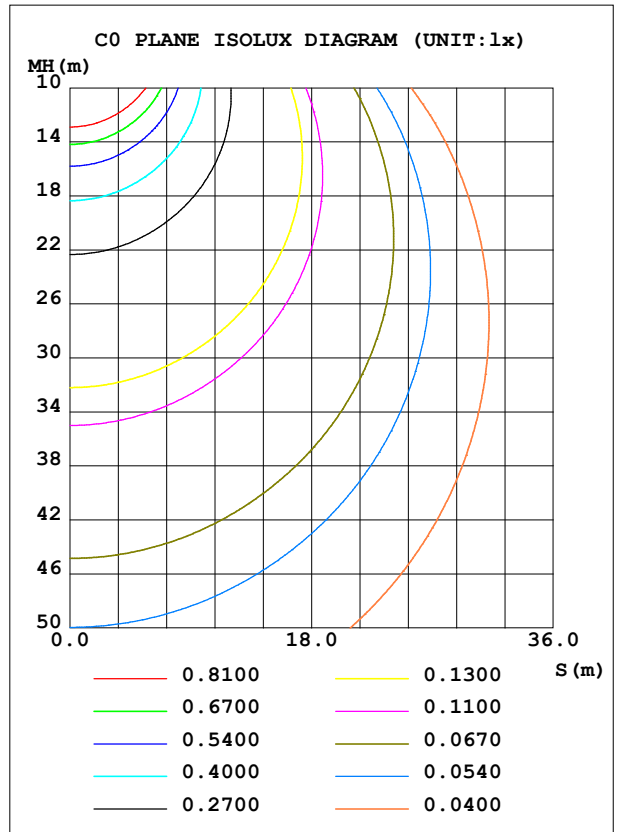
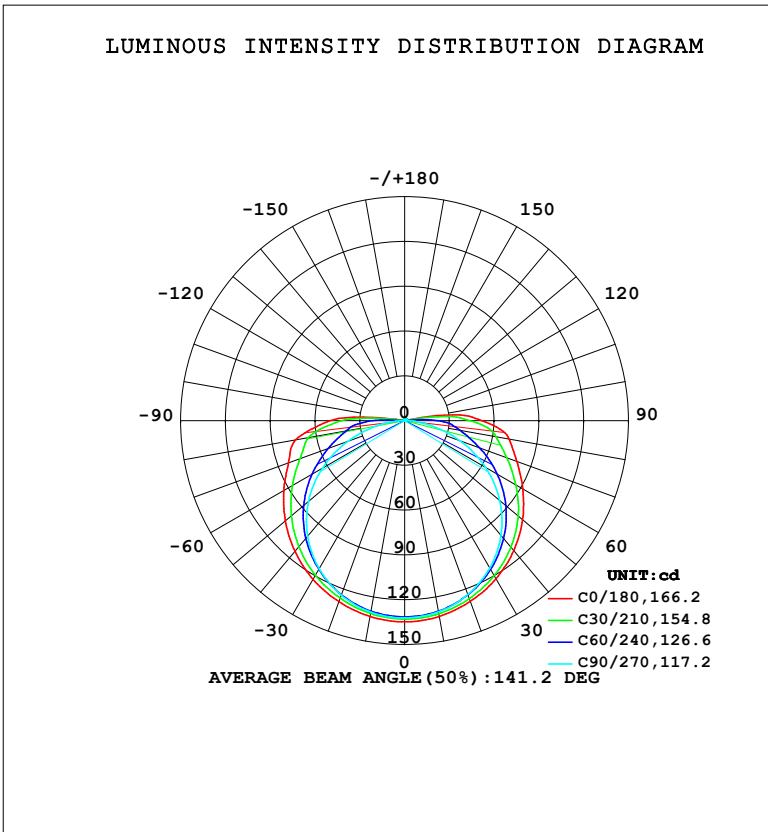


LUMINAIRE PHOTOMETRIC TEST REPORT

NAME: LED Strip	TYPE: Indoor lighting	WEIGHT: 75g
SPEC.: COB LED	DIM.: 500*8*1.9MM	SERIAL No.: 20240330024
MFR.: EVERFINE	SUR.: 500*8MM	Shielding Angle:

DATA OF LAMP		PHOTOMETRIC DATA			
MODEL: GO-2000B-12 (WCP) -UR-EP-LD (WW)		Imax (cd)	140.5	S/MH (C0/180)	1.36
NOMINAL POWER (W)	5.76322	LOR (%)	100.0	S/MH (C90/270)	1.29
RATED VOLTAGE (V)	DC 12V	TOTAL FLUX (lm)	537.89	η UP, DN (C0-180)	2.3, 47.7
NOMINAL FLUX (lm)	537.892	CIE CLASS	DIRECT	η UP, DN (C180-360)	2.3, 47.7
LAMPS INSIDE	1	η up (%)	4.6	CIBSE SHR NOM	1.50
TEST VOLTAGE (V)	DC 12V	η down (%)	95.4	CIBSE SHR MAX	1.55



C Range: 0 - 360DEG
 C Interval: 15.0DEG
 Test Speed: HIGH
 Temperature: 25.3°C
 Operators: DAMIN
 Test Date: 2024-05-24

γ Range: 0 - 180DEG
 γ Interval: 1.0DEG
 Test System: EVERFINE GO-2000B_V1 SYSTEM V2.00.471
 Humidity: 65.0%
 Test Distance: 4.880m [K=1.0000]
 Remarks:

ZONAL FLUX DIAGRAM

ZONAL FLUX DIAGRAM:

γ	C0	C45	C90	C135	C180	C225	C270	C315	γ	Φ zone	Φ total	%lum,lamp
10	133.2	131.1	130.1	136.2	133.2	130.8	130.3	136.6	0- 10	12.79	12.79	2.38,2.38
20	128.8	126.1	124.0	130.8	129.1	125.6	124.3	131.5	10- 20	36.98	49.77	9.25,9.25
30	122.4	118.1	114.1	122.6	122.8	117.6	114.6	123.4	20- 30	57.33	107.1	19.9,19.9
40	113.7	107.5	100.4	111.6	114.3	107.0	101.1	112.6	30- 40	71.82	178.9	33.3,33.3
50	103.2	94.55	83.08	98.35	104.3	94.10	84.09	99.28	40- 50	79.10	258.0	48,48
60	91.40	79.72	62.54	83.62	93.51	79.89	63.45	84.23	50- 60	78.73	336.8	62.6,62.6
70	80.01	64.13	39.53	68.85	82.89	65.81	40.36	68.55	60- 70	71.50	408.2	75.9,75.9
80	71.12	51.56	16.45	58.17	74.04	55.07	17.12	55.14	70- 80	59.94	468.2	87,87
90	51.84	34.37	1.759	34.92	49.94	33.20	1.351	31.08	80- 90	44.71	512.9	95.4,95.4
100	16.84	1.771	0.5995	1.335	2.942	1.242	0.6182	3.566	90-100	18.56	531.5	98.8,98.8
110	1.163	0.9206	0.7111	0.8358	0.9696	0.8171	0.7486	0.9977	100-110	1.530	533.0	99.1,99.1
120	1.054	1.001	0.8798	0.9930	1.073	0.9648	0.9139	1.061	110-120	0.9253	533.9	99.3,99.3
130	1.183	1.152	1.039	1.148	1.186	1.109	1.070	1.206	120-130	0.9606	534.9	99.4,99.4
140	1.278	1.269	1.189	1.283	1.281	1.229	1.212	1.316	130-140	0.9310	535.8	99.6,99.6
150	1.370	1.375	1.328	1.407	1.375	1.346	1.347	1.430	140-150	0.8285	536.6	99.8,99.8
160	1.477	1.476	1.460	1.527	1.482	1.460	1.469	1.535	150-160	0.6628	537.3	99.9,99.9
170	1.568	1.569	1.564	1.637	1.580	1.557	1.570	1.632	160-170	0.4354	537.7	100,100
180	1.631	1.620	1.631	1.694	1.632	1.621	1.624	1.704	170-180	0.1541	537.9	100,100
DEG	LUMINOUS INTENSITY:cd									UNIT:lm		

Conical surface Flux(90deg): 218.04 lm

%lum = 40.5%

%lamp = 40.5%

Conical surface Flux(120deg): 336.75 lm

%lum = 62.6%

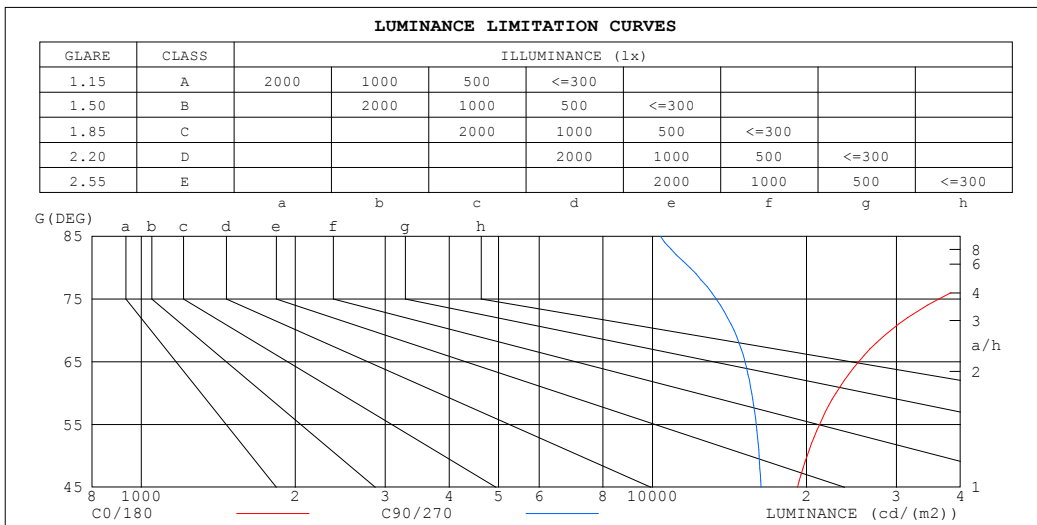
%lamp = 62.6%

C Range: 0 - 360DEG
 C Interval: 15.0DEG
 Test Speed: HIGH
 Temperature:25.3°C
 Operators:DAMIN
 Test Date:2024-05-24

γ Range: 0 - 180DEG
 γ Interval: 1.0DEG
 Test System:EVERFINE GO-2000B_V1 SYSTEM V2.00.471
 Humidity:65.0%
 Test Distance:4.880m [K=1.0000]
 Remarks:

LUMINANCE LIMITATION CURVES

NAME: LED Strip	TYPE: Indoor lighting	WEIGHT: 75g
SPEC.: COB LED	DIM.: 500*8*1.9MM	SERIAL No.: 20240330024
MFR.: EVERFINE	SUR.: 500*8MM	Shielding Angle:



LUMINANCE cd/(m2)		
G (DEG)	C0/180	C90/270
85	91842	10372
80	51196	11840
75	36314	13328
70	29241	14446
65	25305	15160
60	22851	15636
55	21215	15950
50	20068	16156
45	19207	16290

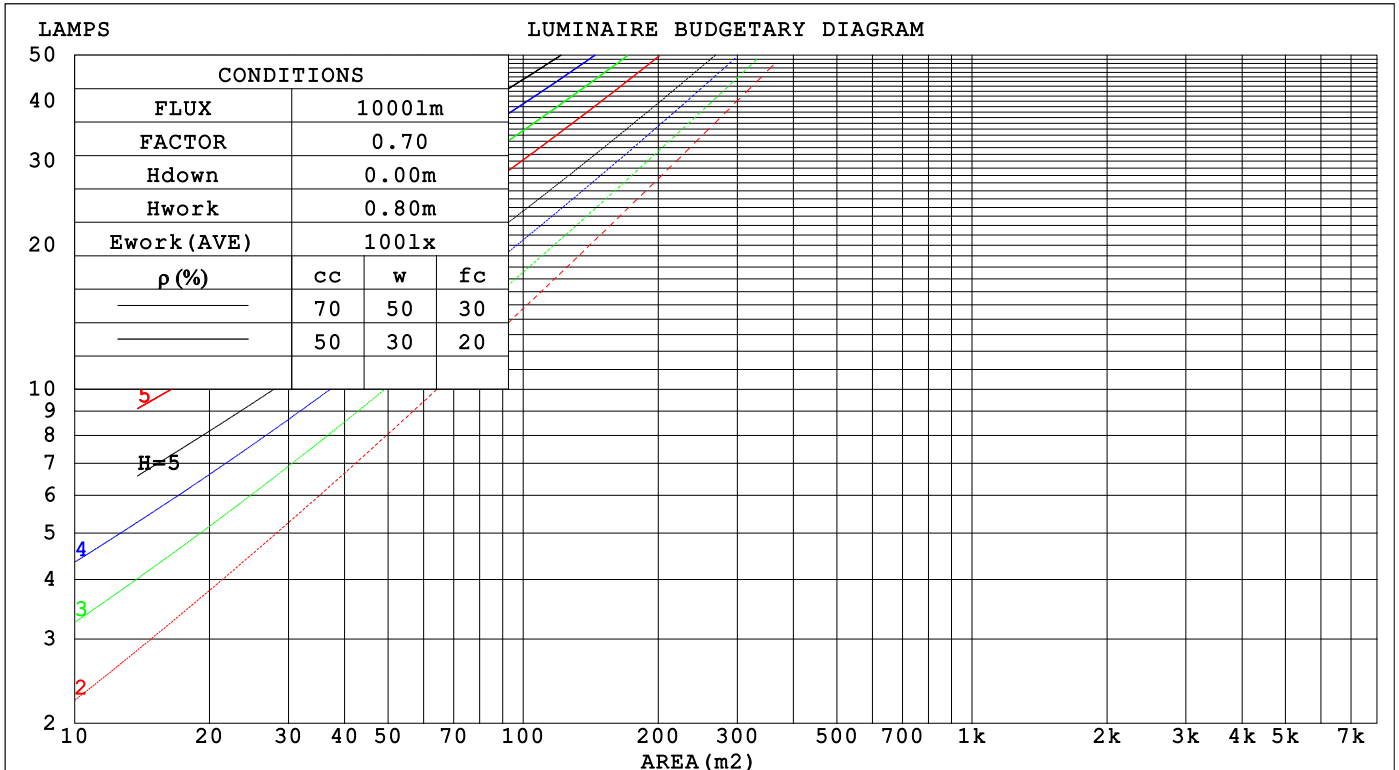
C Range: 0 - 360DEG
 C Interval: 15.0DEG
 Test Speed: HIGH
 Temperature: 25.3°C
 Operators: DAMIN
 Test Date: 2024-05-24

γ Range: 0 - 180DEG
 γ Interval: 1.0DEG
 Test System: EVERFINE GO-2000B_V1 SYSTEM V2.00.471
 Humidity: 65.0%
 Test Distance: 4.880m [K=1.0000]
 Remarks:

CU AND LUMINAIRE BUDGETARY ESTIMATE DIAGRAM

NAME: LED Strip	TYPE: Indoor lighting	WEIGHT: 75g
SPEC.: COB LED	DIM.: 500*8*1.9MM	SERIAL No.: 20240330024
MFR.: EVERFINE	SUR.: 500*8MM	Shielding Angle:

ρcc	80%			70%			50%			30%			10%			0
ρw	50%	30%	10%	50%	30%	10%	50%	30%	10%	50%	30%	10%	50%	30%	10%	0
ρfc	20%			20%			20%			20%			20%			0
RCR	RCR:Room Cavity Ratio															
	Coefficients of Utilization(CU)															
0.0	1.18	1.18	1.18	1.15	1.15	1.15	1.09	1.09	1.09	1.03	1.03	1.03	.98	.98	.98	.95
1.0	.98	.92	.87	.95	.90	.85	.90	.86	.82	.85	.82	.78	.81	.78	.75	.73
2.0	.83	.75	.68	.81	.74	.67	.77	.70	.65	.73	.67	.63	.69	.64	.60	.58
3.0	.72	.63	.55	.70	.62	.55	.66	.59	.53	.63	.57	.51	.60	.54	.50	.47
4.0	.63	.54	.46	.62	.53	.45	.58	.51	.44	.55	.49	.43	.53	.47	.42	.39
5.0	.56	.46	.39	.55	.46	.39	.52	.44	.38	.49	.42	.37	.47	.41	.36	.34
6.0	.50	.41	.34	.49	.40	.33	.47	.39	.33	.45	.37	.32	.43	.36	.31	.29
7.0	.45	.36	.30	.44	.36	.29	.42	.34	.29	.40	.33	.28	.39	.32	.28	.25
8.0	.41	.32	.26	.40	.32	.26	.39	.31	.25	.37	.30	.25	.35	.29	.25	.22
9.0	.38	.29	.23	.37	.29	.23	.36	.28	.23	.34	.27	.22	.33	.27	.22	.20
10.0	.35	.27	.21	.34	.26	.21	.33	.26	.21	.32	.25	.20	.30	.24	.20	.18



C Range: 0 - 360DEG
 C Interval: 15.0DEG
 Test Speed: HIGH
 Temperature: 25.3°C
 Operators: DAMIN
 Test Date: 2024-05-24

γ Range: 0 - 180DEG
 γ Interval: 1.0DEG
 Test System: EVERFINE GO-2000B_V1 SYSTEM V2.00.471
 Humidity: 65.0%
 Test Distance: 4.880m [K=1.0000]
 Remarks:

WEC AND CCEC

NAME: LED Strip	TYPE: Indoor lighting	WEIGHT: 75g
SPEC.: COB LED	DIM.: 500*8*1.9MM	SERIAL No.: 20240330024
MFR.: EVERFINE	SUR.: 500*8MM	Shielding Angle:

ρ_{cc}	80%			70%			50%			30%			10%			0
ρ_w	50%	30%	10%	50%	30%	10%	50%	30%	10%	50%	30%	10%	50%	30%	10%	0
ρ_{fc}	20%			20%			20%			20%			20%			0
RCR	RCR:Room Cavity Ratio						Wall Exitance Coefficients(WEC)									
0.0																
1.0	.403	.229	.073	.394	.225	.071	.378	.217	.069	.363	.209	.067	.349	.202	.065	
2.0	.348	.191	.059	.340	.187	.058	.326	.181	.056	.312	.175	.055	.300	.169	.053	
3.0	.308	.164	.049	.301	.161	.049	.288	.156	.047	.276	.151	.046	.265	.147	.045	
4.0	.277	.144	.042	.271	.142	.042	.259	.137	.041	.248	.133	.040	.238	.129	.039	
5.0	.251	.128	.037	.246	.126	.037	.235	.122	.036	.225	.119	.035	.216	.116	.035	
6.0	.230	.115	.033	.225	.113	.033	.215	.110	.032	.206	.107	.032	.198	.104	.031	
7.0	.211	.105	.030	.207	.103	.029	.199	.100	.029	.191	.098	.028	.183	.095	.028	
8.0	.196	.096	.027	.192	.094	.027	.184	.092	.026	.177	.090	.026	.170	.087	.025	
9.0	.182	.088	.025	.179	.087	.024	.172	.085	.024	.165	.083	.024	.159	.081	.023	
10.0	.170	.082	.023	.167	.081	.023	.161	.079	.022	.155	.077	.022	.149	.075	.022	

ρ_{cc}	80%			70%			50%			30%			10%			0
ρ_w	50%	30%	10%	50%	30%	10%	50%	30%	10%	50%	30%	10%	50%	30%	10%	0
ρ_{fc}	20%			20%			20%			20%			20%			0
RCR	RCR:Room Cavity Ratio						Ceiling Cavity Exitance Coefficients(CCEC)									
0.0	.226	.226	.226	.193	.193	.193	.132	.132	.132	.076	.076	.076	.024	.024	.024	
1.0	.222	.191	.163	.190	.164	.140	.130	.113	.097	.075	.065	.056	.024	.021	.018	
2.0	.216	.168	.127	.185	.144	.110	.127	.100	.077	.073	.058	.045	.023	.019	.015	
3.0	.208	.151	.105	.178	.130	.091	.122	.090	.064	.071	.053	.038	.023	.017	.012	
4.0	.200	.138	.090	.172	.119	.079	.118	.083	.055	.068	.049	.033	.022	.016	.011	
5.0	.192	.128	.080	.165	.111	.070	.114	.077	.049	.066	.045	.029	.021	.015	.010	
6.0	.184	.120	.073	.158	.104	.064	.109	.073	.045	.063	.043	.027	.020	.014	.009	
7.0	.177	.113	.068	.152	.098	.059	.105	.069	.042	.061	.040	.025	.020	.013	.008	
8.0	.170	.107	.064	.146	.093	.056	.101	.065	.040	.059	.038	.024	.019	.013	.008	
9.0	.163	.102	.061	.141	.089	.053	.097	.062	.038	.057	.037	.023	.018	.012	.007	
10.0	.157	.098	.058	.136	.085	.051	.094	.060	.036	.055	.035	.022	.018	.012	.007	

C Range: 0 - 360DEG
 C Interval: 15.0DEG
 Test Speed: HIGH
 Temperature:25.3°C
 Operators:DAMIN
 Test Date:2024-05-24

γ Range: 0 - 180DEG
 γ Interval: 1.0DEG
 Test System:EVERFINE GO-2000B_V1 SYSTEM V2.00.471
 Humidity:65.0%
 Test Distance:4.880m [K=1.0000]
 Remarks:

UGR(Unified Glare Rating) Table

NAME: LED Strip		TYPE: Indoor lighting					WEIGHT: 75g				
SPEC.: COB LED		DIM.: 500*8*1.9MM					SERIAL No.: 20240330024				
MFR.: EVERFINE		SUR.: 500*8MM					Shielding Angle:				
ceiling/cavity		0.7	0.7	0.5	0.5	0.3	0.7	0.7	0.5	0.5	0.3
walls		0.5	0.3	0.5	0.3	0.3	0.5	0.3	0.5	0.3	0.3
working plane		0.2	0.2	0.2	0.2	0.2	0.2	0.2	0.2	0.2	0.2
Room dimensions		Viewed crosswise					Viewed endwise				
x = 2H y = 2H		25.6	27.2	25.9	27.5	27.8	24.0	25.6	24.3	25.9	26.2
	3H	28.3	29.7	28.6	30.1	30.4	25.6	27.1	26.0	27.4	27.7
	4H	29.8	31.2	30.1	31.5	31.9	26.2	27.6	26.6	28.0	28.4
	6H	31.5	32.8	31.9	33.2	33.6	26.7	28.1	27.1	28.4	28.8
	8H	32.4	33.7	32.8	34.1	34.5	26.9	28.2	27.3	28.5	28.9
	12H	33.5	34.7	33.9	35.1	35.5	27.0	28.2	27.4	28.6	29.0
	4H 2H	26.2	27.7	26.6	28.0	28.4	25.0	26.5	25.4	26.8	27.2
	3H	29.1	30.4	29.6	30.8	31.2	26.9	28.2	27.3	28.6	29.0
	4H	30.8	32.0	31.3	32.4	32.9	27.7	28.9	28.2	29.3	29.8
	6H	32.8	33.8	33.3	34.3	34.8	28.4	29.5	28.9	29.9	30.4
	8H	33.9	34.9	34.4	35.3	35.8	28.6	29.6	29.1	30.1	30.6
	12H	35.1	36.0	35.6	36.5	37.0	28.8	29.7	29.3	30.2	30.7
	8H 4H	31.2	32.2	31.7	32.7	33.2	28.8	29.8	29.3	30.2	30.7
	6H	33.5	34.3	34.0	34.8	35.4	29.8	30.7	30.3	31.1	31.7
	8H	34.8	35.6	35.4	36.1	36.6	30.3	31.0	30.8	31.5	32.1
	12H	36.3	37.0	36.8	37.5	38.1	30.6	31.3	31.2	31.8	32.4
	12H 4H	31.3	32.2	31.8	32.7	33.2	29.1	30.0	29.6	30.5	31.0
	6H	33.6	34.4	34.2	34.9	35.5	30.4	31.2	30.9	31.7	32.2
	8H	35.1	35.7	35.6	36.3	36.9	31.1	31.7	31.6	32.3	32.8
Variations with the observer position at spacings(CIE Pub.117):											
S = 1.0H		+ 0.1 / - 0.1					+ 0.1 / - 0.1				
1.5H		+ 0.2 / - 0.3					+ 0.2 / - 0.3				
2.0H		+ 0.3 / - 0.4					+ 0.2 / - 0.4				

CIE Pub.117, 537.9 lm Total Lamp Luminous Flux Correct (8log(F/F0) = -2.2)
 Area: 0.008 m2

C Range: 0 - 360DEG
 C Interval: 15.0DEG
 Test Speed: HIGH
 Temperature:25.3°C
 Operators:DAMIN
 Test Date:2024-05-24

γ Range: 0 - 180DEG
 γ Interval: 1.0DEG
 Test System:EVERFINE GO-2000B_V1 SYSTEM V2.00.471
 Humidity:65.0%
 Test Distance:4.880m [K=1.0000]
 Remarks:

UTILIZATION FACTORS TABLE

NAME: LED Strip	TYPE: Indoor lighting	WEIGHT: 75g
SPEC.: COB LED	DIM.: 500*8*1.9MM	SERIAL No.: 20240330024
MFR.: EVERFINE	SUR.: 500*8MM	Shielding Angle:

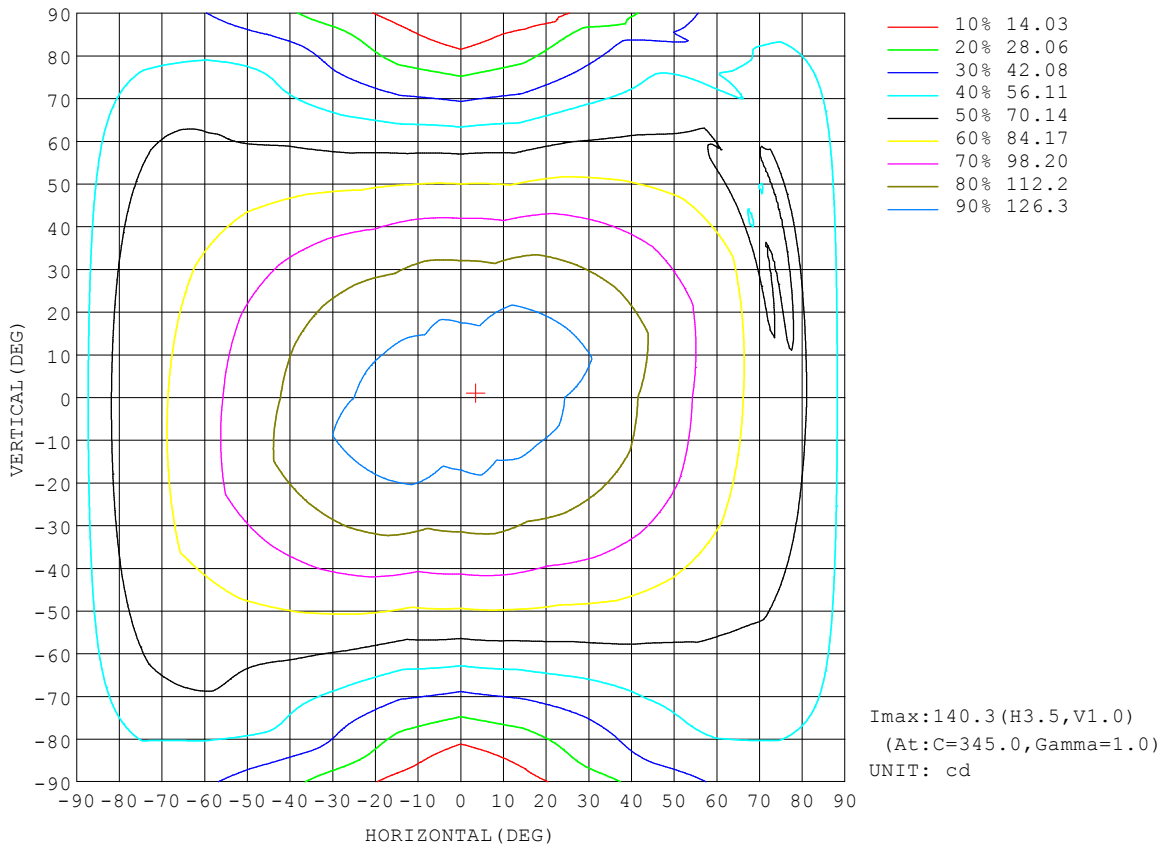
REFLECTANCE										
Ceiling	0.8	0.8	0.8	0.7	0.7	0.7	0.5	0.5	0.5	0
Walls	0.7	0.5	0.3	0.7	0.5	0.3	0.7	0.5	0.3	0
Working plane	0.2	0.2	0.2	0.2	0.2	0.2	0.2	0.2	0.2	0
ROOM INDEX	UTILIZATION FACTORS (PERCENT) $k(RI) \times RCR = 5$									
$k = 0.60$	51	39	31	50	38	31	49	38	31	24
0.80	60	47	39	59	47	39	57	46	39	31
1.00	68	56	47	67	55	47	64	56	46	38
1.25	75	63	54	74	62	54	70	60	53	45
1.50	80	68	60	78	67	59	75	65	58	49
2.00	88	77	69	85	75	68	81	73	66	57
2.50	92	82	74	90	80	73	85	77	71	61
3.00	96	87	79	93	85	78	88	81	76	65
4.00	100	93	86	98	91	85	92	87	82	71
5.00	103	97	91	100	94	89	95	90	86	74
ROOM INDEX	UF(total)									Direct
According to DIN EN 13032-2 2004			Suspended				SHRNOM = 1.25			

C Range: 0 - 360DEG
 C Interval: 15.0DEG
 Test Speed: HIGH
 Temperature: 25.3°C
 Operators: DAMIN
 Test Date: 2024-05-24

γ Range: 0 - 180DEG
 γ Interval: 1.0DEG
 Test System: EVERFINE GO-2000B_V1 SYSTEM V2.00.471
 Humidity: 65.0%
 Test Distance: 4.880m [K=1.0000]
 Remarks:

ISOCANDELA DIAGRAM

NAME: LED Strip	TYPE: Indoor lighting	WEIGHT: 75g
SPEC.: COB LED	DIM.: 500*8*1.9MM	SERIAL No.: 20240330024
MFR.: EVERFINE	SUR.: 500*8MM	Shielding Angle:

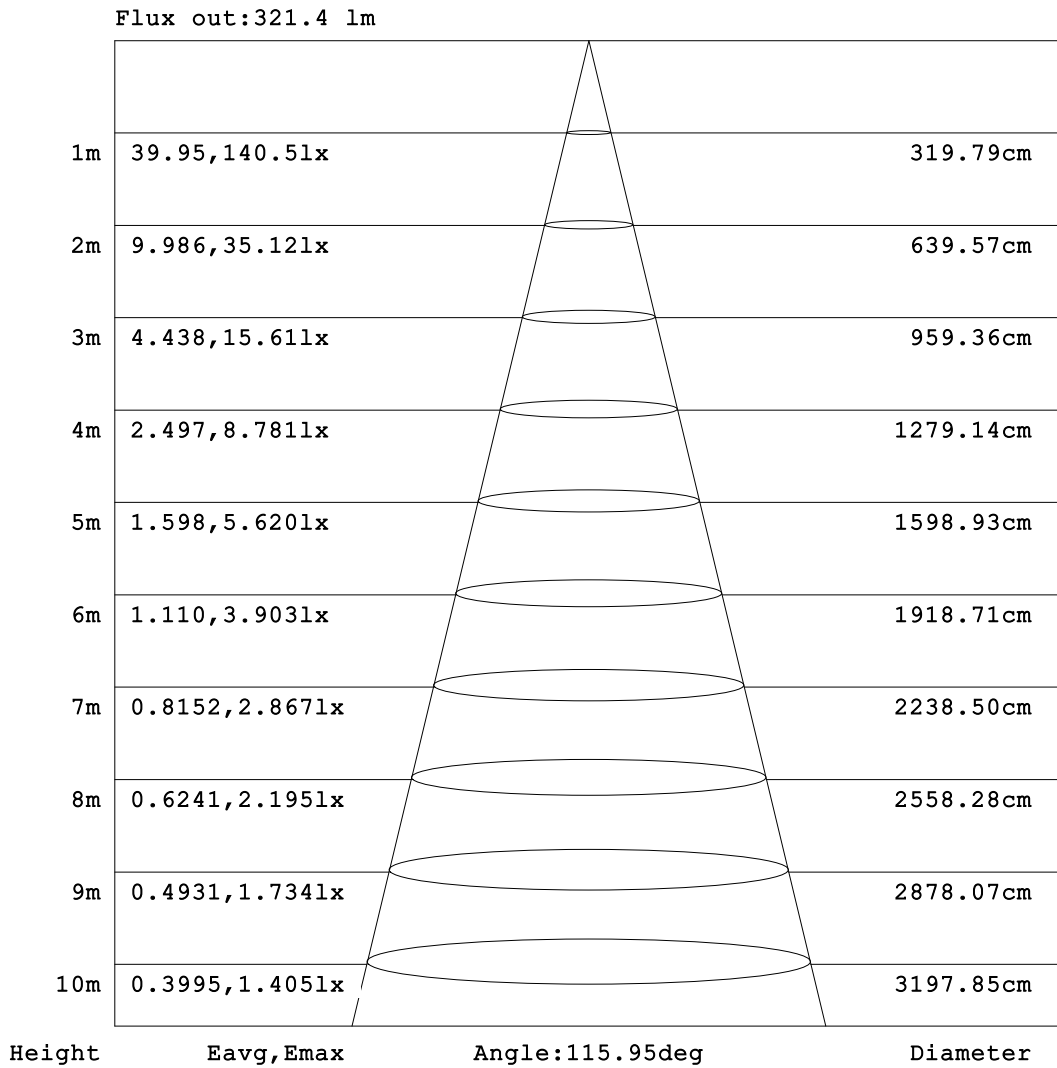


C Range: 0 - 360DEG
 C Interval: 15.0DEG
 Test Speed: HIGH
 Temperature:25.3°C
 Operators:DAMIN
 Test Date:2024-05-24

γ Range: 0 - 180DEG
 γ Interval: 1.0DEG
 Test System:EVERFINE GO-2000B_V1 SYSTEM V2.00.471
 Humidity:65.0%
 Test Distance:4.880m [K=1.0000]
 Remarks:

AAI Figure

NAME: LED Strip	TYPE: Indoor lighting	WEIGHT: 75g
SPEC.: COB LED	DIM.: 500*8*1.9MM	SERIAL No.: 20240330024
MFR.: EVERFINE	SUR.: 500*8MM	Shielding Angle:



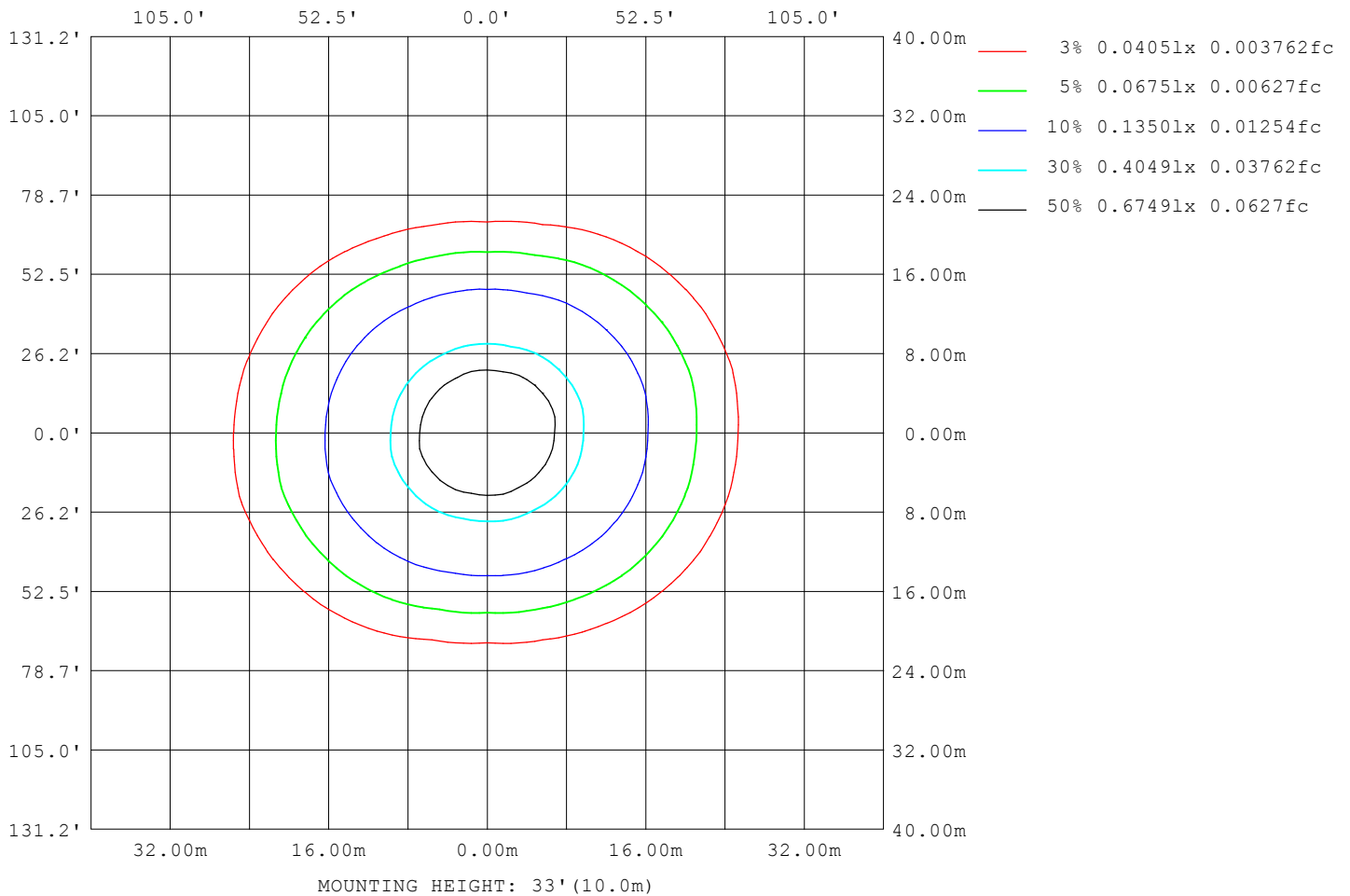
Note: The Curves indicate the illuminated area and the average illumination when the luminaire is at different distance.

C Range: 0 - 360DEG
 C Interval: 15.0DEG
 Test Speed: HIGH
 Temperature: 25.3°C
 Operators: DAMIN
 Test Date: 2024-05-24

γ Range: 0 - 180DEG
 γ Interval: 1.0DEG
 Test System: EVERFINE GO-2000B_V1 SYSTEM V2.00.471
 Humidity: 65.0%
 Test Distance: 4.880m [K=1.0000]
 Remarks:

ISOLUX DIAGRAM

NAME: LED Strip	TYPE: Indoor lighting	WEIGHT: 75g
SPEC.: COB LED	DIM.: 500*8*1.9MM	SERIAL No.: 20240330024
MFR.: EVERFINE	SUR.: 500*8MM	Shielding Angle:



C Range: 0 - 360DEG
 C Interval: 15.0DEG
 Test Speed: HIGH
 Temperature: 25.3°C
 Operators: DAMIN
 Test Date: 2024-05-24

γ Range: 0 - 180DEG
 γ Interval: 1.0DEG
 Test System: EVERFINE GO-2000B_V1 SYSTEM V2.00.471
 Humidity: 65.0%
 Test Distance: 4.880m [K=1.0000]
 Remarks:

LED Avg.L Report

NAME: LED Strip	TYPE: Indoor lighting	WEIGHT: 75g
SPEC.: COB LED	DIM.: 500*8*1.9MM	SERIAL No.: 20240330024
MFR.: EVERFINE	SUR.: 500*8MM	Shielding Angle:

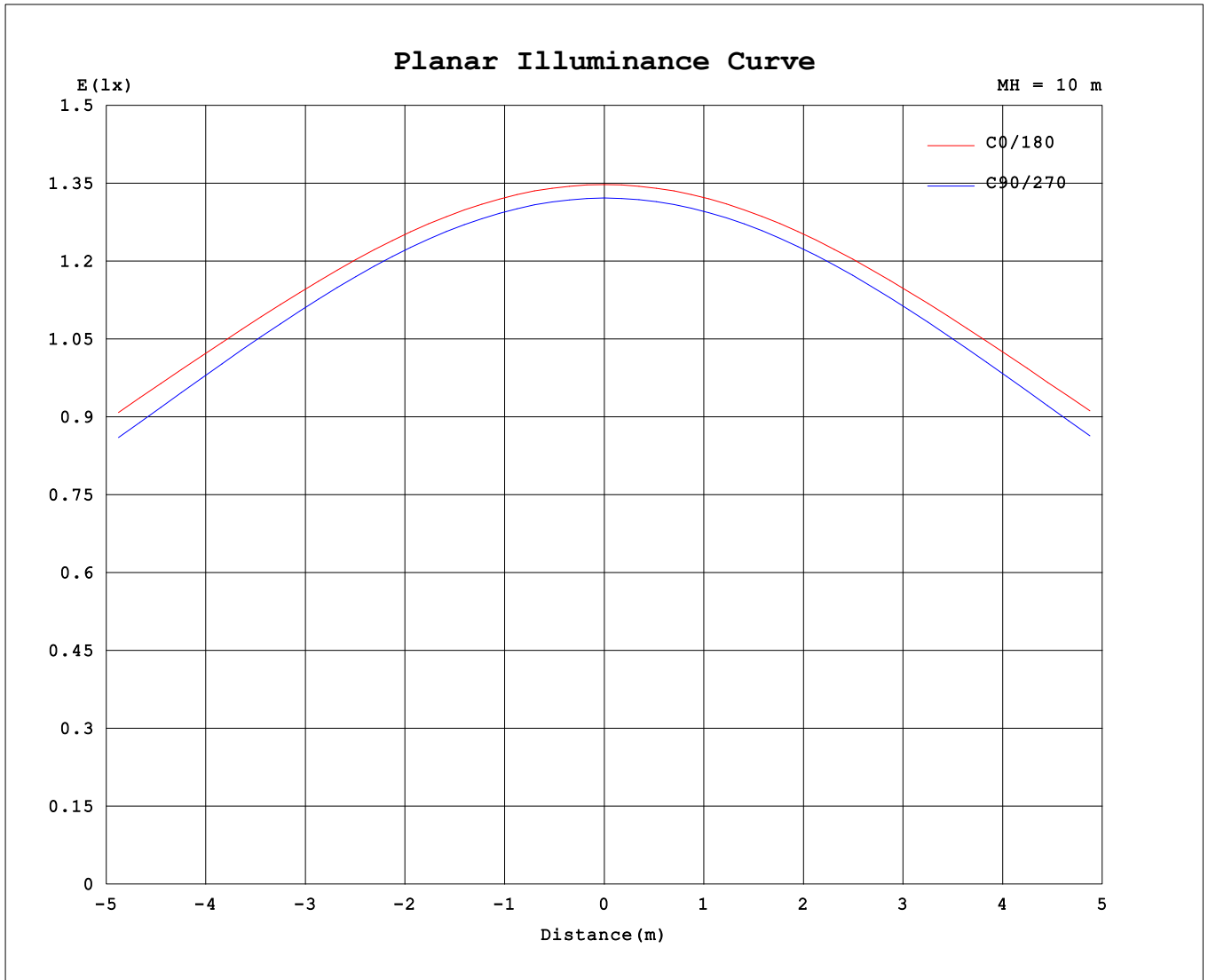
AvgL	cd/m2
L_0~180 (65) av	25646
L_0~180 (75) av	37310
L_0~180 (85) av	90397
L_90~270 (65) av	15291
L_90~270 (75) av	13537
L_90~270 (85) av	10546
L_45 (65) av	21971
L_45 (75) av	29034
L_45 (85) av	67616

Standard: GB/T 29293-2012

C Range: 0 - 360DEG
 C Interval: 15.0DEG
 Test Speed: HIGH
 Temperature:25.3°C
 Operators:DAMIN
 Test Date:2024-05-24

γ Range: 0 - 180DEG
 γ Interval: 1.0DEG
 Test System:EVERFINE GO-2000B_V1 SYSTEM V2.00.471
 Humidity:65.0%
 Test Distance:4.880m [K=1.0000]
 Remarks:

Planar Illuminance Curve



C Range: 0 - 360DEG
 C Interval: 15.0DEG
 Test Speed: HIGH
 Temperature: 25.3°C
 Operators: DAMIN
 Test Date: 2024-05-24

γ Range: 0 - 180DEG
 γ Interval: 1.0DEG
 Test System: EVERFINE GO-2000B_V1 SYSTEM V2.00.471
 Humidity: 65.0%
 Test Distance: 4.880m [K=1.0000]
 Remarks:

LUMINOUS DISTRIBUTION INTENSITY DATA

NAME: LED Strip	TYPE: Indoor lighting	WEIGHT: 75g
SPEC.: COB LED	DIM.: 500*8*1.9MM	SERIAL No.: 20240330024
MFR.: EVERFINE	SUR.: 500*8MM	Shielding Angle:

Table--1

UNIT: cd

C (DEG) \ γ (DEG)	0	15	30	45	60	75	90	105	120	135	150	165	180	195	210	225	240	255	270
0	135	134	133	133	131	133	132	132	137	138	139	140	135	134	133	133	131	133	132
5	134	134	133	132	131	133	132	131	137	138	139	140	134	134	132	132	131	133	132
10	133	133	131	131	130	131	130	130	135	136	137	139	133	132	131	131	130	131	130
15	131	131	130	129	127	129	128	127	132	134	135	137	131	130	129	129	127	129	128
20	129	128	127	126	124	125	124	124	129	131	132	134	129	128	127	126	124	125	124
25	126	126	124	122	120	121	120	119	125	127	129	131	126	125	123	122	120	121	120
30	122	122	120	118	115	116	114	114	120	123	125	127	123	121	120	118	115	116	115
35	118	118	116	113	109	109	108	108	114	117	120	123	119	117	115	113	109	109	108
40	114	113	111	107	103	102	100	101	107	112	115	118	114	113	110	107	103	102	101
45	109	108	105	101	96.2	94.3	92.2	93.0	100.0	105	109	113	110	108	105	101	96.0	94.4	93.0
50	103	103	99.3	94.6	88.5	85.5	83.1	84.4	92.1	98.4	103	108	104	102	99.0	94.1	88.3	85.6	84.1
55	97.3	96.7	92.8	87.4	80.2	75.9	73.2	75.2	83.7	91.1	97.0	102	99.0	97.0	92.9	87.1	80.1	76.1	74.3
60	91.4	90.4	86.0	79.7	71.6	65.6	62.5	65.2	75.0	83.6	90.6	96.0	93.5	91.5	86.8	79.9	71.7	66.0	63.4
65	85.6	84.3	79.3	71.8	62.6	55.2	51.3	55.1	66.2	76.3	84.3	90.1	87.9	85.7	80.7	72.7	62.8	55.5	52.1
70	80.0	78.3	72.8	64.1	53.4	44.4	39.5	44.7	57.6	68.9	78.2	84.7	82.9	80.6	74.6	65.8	54.5	44.8	40.4
75	75.2	73.3	67.0	57.3	44.9	34.1	27.6	35.0	49.6	62.6	73.7	81.0	79.3	76.9	70.0	59.5	46.7	34.4	28.5
80	71.1	68.8	62.2	51.6	37.7	24.0	16.4	26.2	43.0	58.2	68.8	75.5	74.0	71.7	65.5	55.1	39.8	25.0	17.1
85	64.0	62.0	55.8	45.9	31.8	16.4	7.23	19.1	35.4	47.8	56.6	62.8	62.0	59.9	54.7	45.8	33.5	17.5	7.47
90	51.8	49.8	43.7	34.4	21.9	9.57	1.76	10.1	23.0	34.9	44.1	50.2	49.9	47.9	42.4	33.2	21.7	9.39	1.35
95	40.8	38.9	32.2	22.1	7.90	0.96	0.65	0.91	2.61	11.1	19.4	26.3	27.9	24.9	20.0	10.7	2.28	0.79	0.64
100	16.8	15.1	8.11	1.77	1.06	0.79	0.60	0.77	1.08	1.34	1.69	2.49	2.94	2.02	1.58	1.24	0.93	0.69	0.62
105	1.63	1.57	1.30	1.09	0.89	0.71	0.63	0.66	0.83	0.99	1.13	1.23	1.11	1.09	1.03	0.90	0.75	0.68	0.66
110	1.16	1.13	1.06	0.92	0.80	0.76	0.71	0.71	0.76	0.84	0.93	0.99	0.97	0.95	0.90	0.82	0.76	0.74	0.75
115	1.03	1.01	0.97	0.93	0.86	0.84	0.79	0.79	0.84	0.91	0.96	1.00	1.01	0.98	0.95	0.88	0.83	0.82	0.83
120	1.05	1.06	1.03	1.00	0.94	0.92	0.88	0.88	0.93	0.99	1.05	1.08	1.07	1.05	1.03	0.96	0.92	0.90	0.91
125	1.12	1.13	1.11	1.08	1.01	1.00	0.96	0.96	1.01	1.08	1.12	1.15	1.14	1.11	1.09	1.04	1.00	0.99	0.99
130	1.18	1.20	1.18	1.15	1.09	1.07	1.04	1.04	1.09	1.15	1.18	1.21	1.19	1.17	1.15	1.11	1.07	1.07	1.07
135	1.24	1.25	1.23	1.21	1.15	1.15	1.12	1.12	1.17	1.22	1.24	1.27	1.24	1.22	1.21	1.17	1.14	1.14	1.14
140	1.28	1.30	1.28	1.27	1.22	1.22	1.19	1.19	1.24	1.28	1.30	1.33	1.28	1.26	1.26	1.23	1.21	1.21	1.21
145	1.32	1.35	1.33	1.32	1.27	1.28	1.26	1.26	1.31	1.34	1.36	1.38	1.33	1.31	1.31	1.29	1.27	1.28	1.28
150	1.37	1.40	1.38	1.37	1.33	1.35	1.33	1.33	1.38	1.41	1.41	1.44	1.37	1.36	1.36	1.35	1.34	1.35	1.35
155	1.42	1.45	1.43	1.43	1.39	1.41	1.40	1.40	1.44	1.47	1.46	1.49	1.43	1.41	1.42	1.40	1.40	1.41	1.41
160	1.48	1.49	1.48	1.48	1.44	1.47	1.46	1.46	1.51	1.53	1.52	1.54	1.48	1.46	1.47	1.46	1.46	1.47	1.47
165	1.52	1.53	1.52	1.52	1.50	1.53	1.52	1.52	1.57	1.59	1.58	1.59	1.53	1.51	1.52	1.51	1.51	1.53	1.52
170	1.57	1.58	1.56	1.57	1.55	1.58	1.56	1.57	1.62	1.64	1.63	1.64	1.58	1.55	1.56	1.56	1.56	1.57	1.57
175	1.61	1.61	1.59	1.61	1.59	1.62	1.61	1.60	1.66	1.68	1.67	1.68	1.61	1.59	1.60	1.59	1.59	1.61	1.61
180	1.63	1.63	1.62	1.62	1.61	1.63	1.63	1.61	1.69	1.69	1.70	1.71	1.63	1.62	1.62	1.62	1.61	1.64	1.62

C Range: 0 - 360DEG
 C Interval: 15.0DEG
 Test Speed: HIGH
 Temperature:25.3℃
 Operators:DAMIN
 Test Date:2024-05-24

γ Range: 0 - 180DEG
 γ Interval: 1.0DEG
 Test System:EVERFINE GO-2000B_V1 SYSTEM V2.00.471
 Humidity:65.0%
 Test Distance:4.880m [K=1.0000]
 Remarks:

LUMINOUS DISTRIBUTION INTENSITY DATA

NAME: LED Strip	TYPE: Indoor lighting	WEIGHT: 75g
SPEC.: COB LED	DIM.: 500*8*1.9MM	SERIAL No.: 20240330024
MFR.: EVERFINE	SUR.: 500*8MM	Shielding Angle:

Table--2

UNIT: cd

C (DEG) \ γ (DEG)	285	300	315	330	345														
0	132	137	138	139	140														
5	131	137	138	139	140														
10	130	135	137	138	139														
15	128	133	134	136	137														
20	124	130	132	133	135														
25	120	126	128	130	132														
30	115	121	123	126	128														
35	109	115	118	121	124														
40	102	109	113	116	119														
45	94.0	102	106	110	113														
50	85.4	93.7	99.3	104	107														
55	76.2	85.2	91.9	97.8	101														
60	66.4	76.3	84.2	90.9	94.7														
65	56.1	67.0	76.3	83.9	88.3														
70	45.6	57.8	68.5	77.0	82.0														
75	35.1	49.0	61.0	71.1	68.7														
80	25.6	41.0	55.1	65.5	70.9														
85	17.9	33.3	49.1	49.9	64.2														
90	5.55	17.7	31.1	46.6	51.7														
95	1.14	12.3	25.4	35.2	40.6														
100	0.79	1.25	3.57	11.7	16.6														
105	0.75	0.92	1.17	1.45	1.65														
110	0.78	0.87	1.00	1.08	1.20														
115	0.85	0.94	0.98	1.06	1.12														
120	0.93	1.02	1.06	1.12	1.16														
125	1.00	1.09	1.14	1.20	1.22														
130	1.08	1.16	1.21	1.26	1.28														
135	1.15	1.22	1.26	1.31	1.34														
140	1.21	1.29	1.32	1.36	1.39														
145	1.28	1.35	1.37	1.41	1.43														
150	1.34	1.41	1.43	1.46	1.48														
155	1.40	1.47	1.48	1.51	1.52														
160	1.46	1.53	1.54	1.56	1.57														
165	1.51	1.58	1.59	1.61	1.61														
170	1.56	1.63	1.63	1.65	1.65														
175	1.60	1.67	1.67	1.68	1.68														
180	1.63	1.68	1.70	1.70	1.70														

C Range: 0 - 360DEG
 C Interval: 15.0DEG
 Test Speed: HIGH
 Temperature:25.3°C
 Operators:DAMIN
 Test Date:2024-05-24

γ Range: 0 - 180DEG
 γ Interval: 1.0DEG
 Test System:EVERFINE GO-2000B_V1 SYSTEM V2.00.471
 Humidity:65.0%
 Test Distance:4.880m [K=1.0000]
 Remarks: