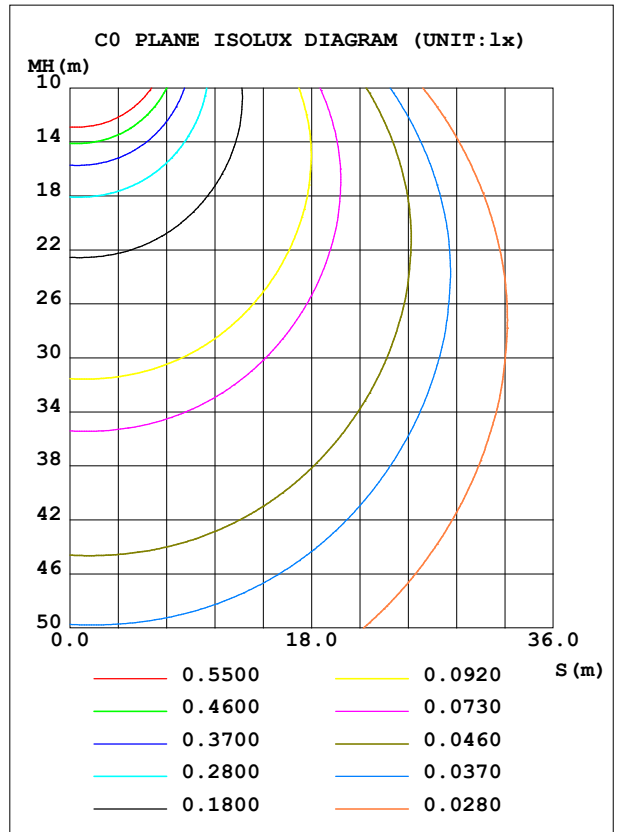
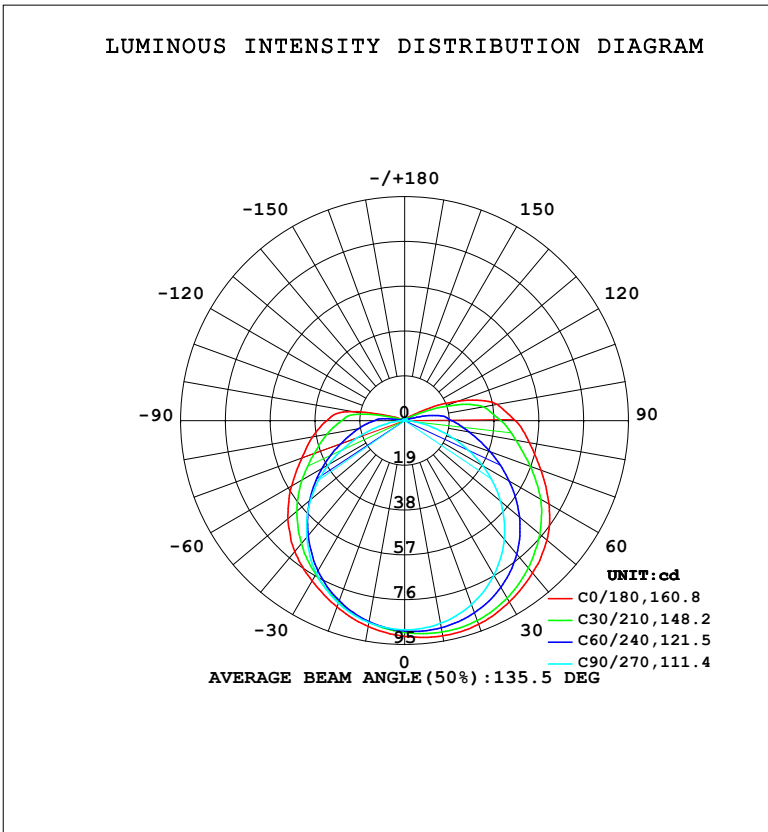


LUMINAIRE PHOTOMETRIC TEST REPORT

NAME: LED Strip	TYPE: Indoor lighting	WEIGHT: 20g
SPEC.: COB LED	DIM.: 500*3*1.9MM	SERIAL No.: 20240904007
MFR.: EVERFINE	SUR.: 500*3MM	Shielding Angle:

DATA OF LAMP		PHOTOMETRIC DATA			
MODEL: GO-24 (WCP) (03) -30-UR-EP		Imax (cd)	92.76	S/MH (C0/180)	1.29
NOMINAL POWER (W)	3.61578	LOR (%)	100.0	S/MH (C90/270)	1.26
RATED VOLTAGE (V)	DC 24V	TOTAL FLUX (lm)	373.60	η UP, DN (C0-180)	5.8, 45.3
NOMINAL FLUX (lm)	373.598	CIE CLASS	SEMI-D.	η UP, DN (C180-360)	5.1, 43.9
LAMPS INSIDE	1	η up (%)	10.8	CIBSE SHR NOM	1.50
TEST VOLTAGE (V)	DC 24V	η down (%)	89.2	CIBSE SHR MAX	1.50



C Range: 0 - 360DEG
 C Interval: 15.0DEG
 Test Speed: HIGH
 Temperature: 25.3°C
 Operators: DAMIN
 Test Date: 2024-09-19

γ Range: 0 - 180DEG
 γ Interval: 1.0DEG
 Test System: EVERFINE GO-2000B_V1 SYSTEM V2.00.471
 Humidity: 65.0%
 Test Distance: 4.880m [K=1.0000]
 Remarks:

ZONAL FLUX DIAGRAM

ZONAL FLUX DIAGRAM:

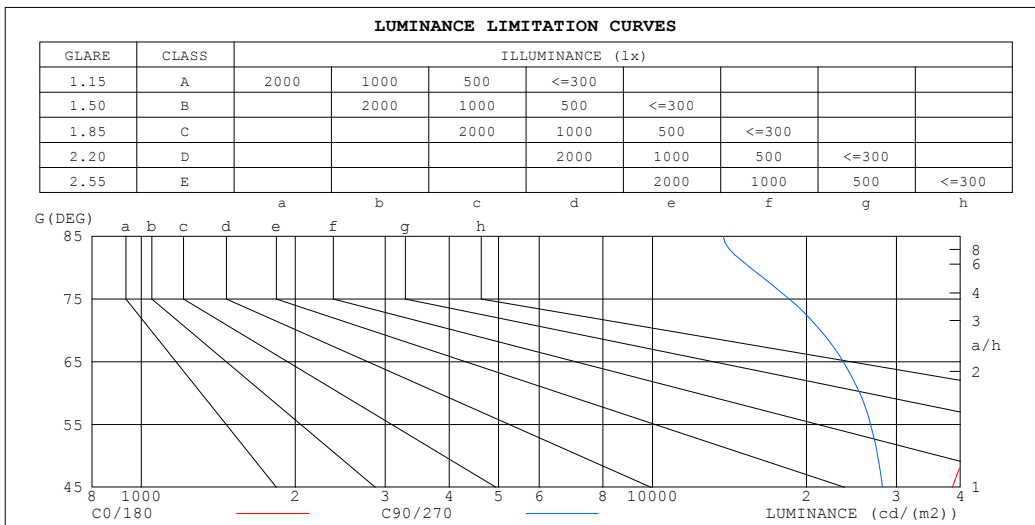
γ	C0	C45	C90	C135	C180	C225	C270	C315	γ	Φ zone	Φ total	%lum,lamp
10	92.72	90.18	87.37	86.61	88.71	86.48	87.03	89.76	0- 10	8.511	8.511	2.28,2.28
20	91.92	88.70	83.00	81.52	84.12	81.18	82.36	88.09	10- 20	24.62	33.13	8.87,8.87
30	88.85	84.62	75.74	74.59	78.55	74.01	74.89	83.93	20- 30	38.06	71.18	19.1,19.1
40	84.43	78.03	65.75	66.07	72.52	65.61	64.60	77.31	30- 40	47.50	118.7	31.8,31.8
50	78.84	69.15	53.14	56.54	64.69	56.09	52.08	68.61	40- 50	52.02	170.7	45.7,45.7
60	70.69	59.46	38.19	45.99	55.40	45.77	37.28	58.79	50- 60	51.18	221.9	59.4,59.4
70	61.56	49.20	21.87	35.88	46.42	35.48	21.40	48.59	60- 70	45.35	267.2	71.5,71.5
80	53.71	39.44	8.090	27.82	39.62	27.52	7.829	38.60	70- 80	37.05	304.3	81.4,81.4
90	47.02	31.94	1.047	21.05	33.07	20.50	0.8469	25.04	80- 90	28.80	333.1	89.2,89.2
100	39.88	25.30	0.4209	9.094	22.38	8.980	0.4517	24.38	90-100	21.69	354.8	95,95
110	24.46	9.462	0.4643	1.147	3.973	1.102	0.5193	11.14	100-110	11.47	366.3	98,98
120	7.365	2.292	0.5714	0.7890	1.068	0.8544	0.6368	2.701	110-120	3.925	370.2	99.1,99.1
130	2.379	0.8378	0.6796	0.8265	0.9739	0.8672	0.7451	0.9108	120-130	1.278	371.5	99.4,99.4
140	0.9551	0.8265	0.7809	0.8952	0.9871	0.9195	0.8440	0.8288	130-140	0.7195	372.2	99.6,99.6
150	0.9091	0.9045	0.8834	0.9674	1.027	0.9812	0.9395	0.9079	140-150	0.5682	372.7	99.8,99.8
160	0.9824	0.9848	0.9788	1.036	1.077	1.038	1.028	0.9917	150-160	0.4511	373.2	99.9,99.9
170	1.052	1.062	1.070	1.092	1.108	1.088	1.098	1.060	160-170	0.2959	373.5	100,100
180	1.112	1.112	1.127	1.127	1.113	1.112	1.129	1.115	170-180	0.1046	373.6	100,100
DEG	LUMINOUS INTENSITY:cd									UNIT:lm		

C Range: 0 - 360DEG
 C Interval: 15.0DEG
 Test Speed: HIGH
 Temperature:25.3°C
 Operators:DAMIN
 Test Date:2024-09-19

γ Range: 0 - 180DEG
 γ Interval: 1.0DEG
 Test System:EVERFINE GO-2000B_V1 SYSTEM V2.00.471
 Humidity:65.0%
 Test Distance:4.880m [K=1.0000]
 Remarks:

LUMINANCE LIMITATION CURVES

NAME: LED Strip	TYPE: Indoor lighting	WEIGHT: 20g
SPEC.: COB LED	DIM.: 500*3*1.9MM	SERIAL No.: 20240904007
MFR.: EVERFINE	SUR.: 500*3MM	Shielding Angle:



LUMINANCE cd/(m2)		
G (DEG)	C0/180	C90/270
85	193275	13755
80	103098	15530
75	73918	18505
70	59998	21311
65	52096	23607
60	47126	25461
55	43666	26692
50	40887	27559
45	38597	28164

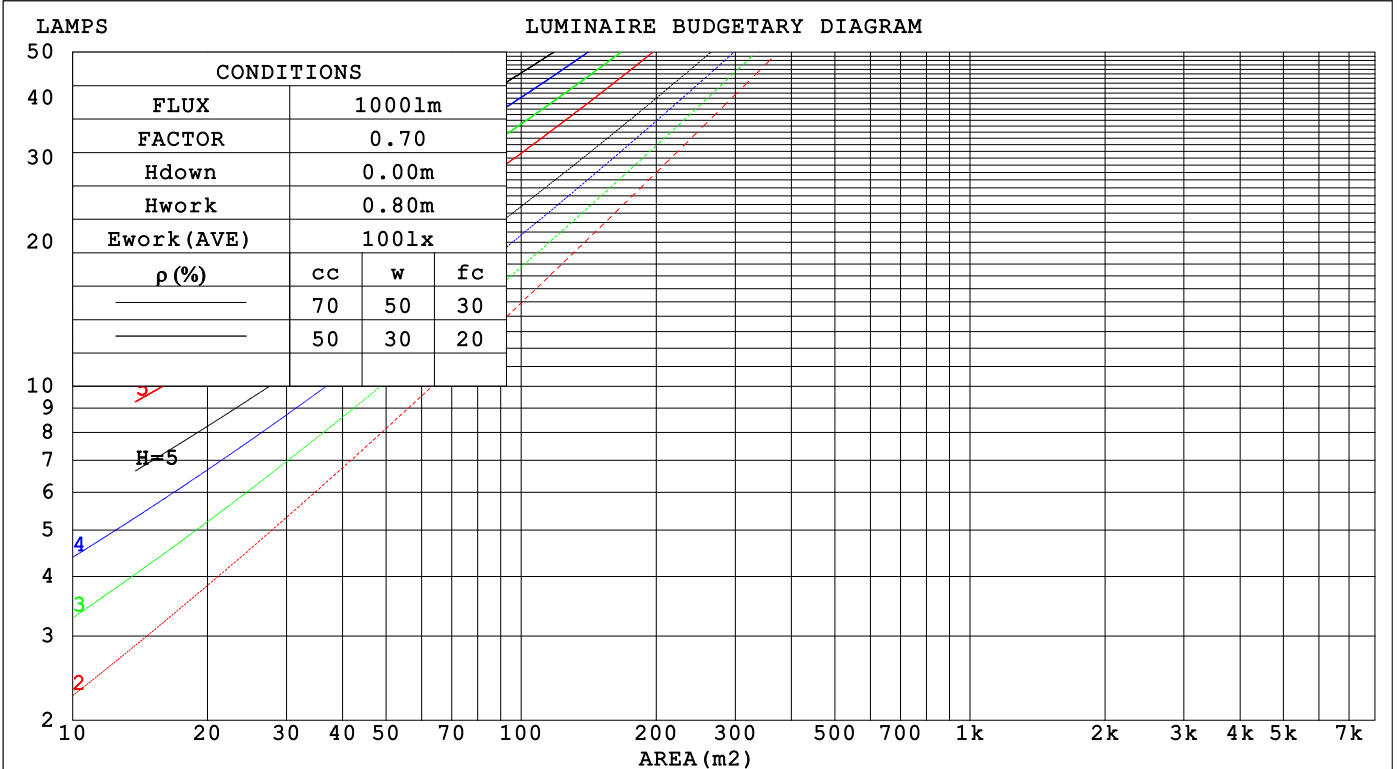
C Range: 0 - 360DEG
 C Interval: 15.0DEG
 Test Speed: HIGH
 Temperature: 25.3°C
 Operators: DAMIN
 Test Date: 2024-09-19

γ Range: 0 - 180DEG
 γ Interval: 1.0DEG
 Test System: EVERFINE GO-2000B_V1 SYSTEM V2.00.471
 Humidity: 65.0%
 Test Distance: 4.880m [K=1.0000]
 Remarks:

CU AND LUMINAIRE BUDGETARY ESTIMATE DIAGRAM

NAME: LED Strip	TYPE: Indoor lighting	WEIGHT: 20g
SPEC.: COB LED	DIM.: 500*3*1.9MM	SERIAL No.: 20240904007
MFR.: EVERFINE	SUR.: 500*3MM	Shielding Angle:

pcc	80%			70%			50%			30%			10%			0
	50%	30%	10%	50%	30%	10%	50%	30%	10%	50%	30%	10%	50%	30%	10%	0
p _w	0															
p _{fc}	0															
RCR	RCR:Room Cavity Ratio Coefficients of Utilization(CU)															
0.0	1.16	1.16	1.16	1.12	1.12	1.12	1.05	1.05	1.05	.98	.98	.98	.92	.92	.92	.89
1.0	.97	.92	.87	.94	.89	.84	.87	.83	.80	.82	.78	.75	.76	.74	.71	.68
2.0	.83	.75	.68	.80	.73	.67	.75	.69	.63	.70	.65	.60	.65	.61	.57	.54
3.0	.72	.63	.56	.70	.61	.54	.65	.58	.52	.61	.55	.50	.57	.52	.48	.45
4.0	.63	.54	.46	.61	.52	.45	.57	.50	.44	.54	.47	.42	.50	.45	.40	.37
5.0	.56	.47	.39	.54	.45	.39	.51	.43	.37	.48	.41	.36	.45	.39	.34	.32
6.0	.50	.41	.34	.49	.40	.33	.46	.38	.32	.43	.36	.31	.40	.35	.30	.28
7.0	.45	.36	.30	.44	.35	.29	.42	.34	.28	.39	.32	.27	.37	.31	.26	.24
8.0	.41	.32	.26	.40	.32	.26	.38	.30	.25	.36	.29	.24	.34	.28	.24	.21
9.0	.38	.29	.24	.37	.29	.23	.35	.28	.22	.33	.26	.22	.31	.25	.21	.19
10.0	.35	.27	.21	.34	.26	.21	.32	.25	.20	.30	.24	.20	.29	.23	.19	.17



C Range: 0 - 360DEG
 C Interval: 15.0DEG
 Test Speed: HIGH
 Temperature: 25.3°C
 Operators: DAMIN
 Test Date: 2024-09-19

γ Range: 0 - 180DEG
 γ Interval: 1.0DEG
 Test System: EVERFINE GO-2000B_V1 SYSTEM V2.00.471
 Humidity: 65.0%
 Test Distance: 4.880m [K=1.0000]
 Remarks:

WEC AND CCEC

NAME: LED Strip	TYPE: Indoor lighting	WEIGHT: 20g
SPEC.: COB LED	DIM.: 500*3*1.9MM	SERIAL No.: 20240904007
MFR.: EVERFINE	SUR.: 500*3MM	Shielding Angle:

ρ_{cc}	80%			70%			50%			30%			10%			0
ρ_w	50%	30%	10%	50%	30%	10%	50%	30%	10%	50%	30%	10%	50%	30%	10%	0
ρ_{fc}	20%			20%			20%			20%			20%			0
RCR	RCR:Room Cavity Ratio						Wall Exitance Coefficients(WEC)									
0.0																
1.0	.390	.222	.070	.379	.216	.069	.359	.206	.066	.341	.197	.063	.324	.188	.061	
2.0	.338	.185	.057	.328	.181	.056	.310	.173	.054	.294	.165	.052	.279	.158	.050	
3.0	.300	.160	.048	.291	.156	.047	.275	.149	.045	.261	.143	.044	.247	.137	.042	
4.0	.270	.140	.041	.262	.137	.041	.248	.131	.039	.235	.126	.038	.222	.121	.037	
5.0	.245	.125	.036	.239	.122	.036	.226	.117	.035	.213	.113	.033	.202	.108	.032	
6.0	.225	.113	.032	.219	.110	.032	.207	.106	.031	.196	.102	.030	.185	.098	.029	
7.0	.207	.103	.029	.202	.100	.029	.191	.097	.028	.181	.093	.027	.172	.089	.026	
8.0	.192	.094	.026	.187	.092	.026	.177	.089	.025	.168	.085	.025	.160	.082	.024	
9.0	.179	.087	.024	.174	.085	.024	.166	.082	.023	.157	.079	.023	.149	.076	.022	
10.0	.168	.080	.022	.163	.079	.022	.155	.076	.021	.147	.073	.021	.140	.070	.020	

ρ_{cc}	80%			70%			50%			30%			10%			0
ρ_w	50%	30%	10%	50%	30%	10%	50%	30%	10%	50%	30%	10%	50%	30%	10%	0
ρ_{fc}	20%			20%			20%			20%			20%			0
RCR	RCR:Room Cavity Ratio						Ceiling Cavity Exitance Coefficients(CCEC)									
0.0	.273	.273	.273	.233	.233	.233	.159	.159	.159	.092	.092	.092	.029	.029	.029	
1.0	.269	.239	.211	.230	.205	.182	.157	.141	.126	.091	.082	.073	.029	.026	.024	
2.0	.262	.216	.176	.225	.186	.152	.154	.128	.106	.089	.075	.062	.028	.024	.020	
3.0	.255	.199	.154	.218	.171	.134	.150	.119	.094	.087	.070	.055	.028	.023	.018	
4.0	.247	.186	.140	.212	.161	.122	.146	.112	.086	.084	.066	.051	.027	.021	.017	
5.0	.239	.176	.130	.205	.152	.113	.141	.106	.080	.082	.063	.047	.026	.020	.016	
6.0	.231	.168	.123	.199	.146	.107	.137	.102	.076	.080	.060	.045	.026	.020	.015	
7.0	.224	.161	.117	.193	.140	.102	.133	.098	.073	.077	.058	.043	.025	.019	.014	
8.0	.217	.156	.113	.187	.135	.099	.129	.095	.070	.075	.056	.042	.024	.018	.014	
9.0	.211	.151	.110	.182	.131	.096	.126	.092	.068	.073	.054	.041	.024	.018	.014	
10.0	.205	.147	.108	.177	.127	.094	.123	.090	.067	.071	.053	.040	.023	.017	.013	

C Range: 0 - 360DEG
 C Interval: 15.0DEG
 Test Speed: HIGH
 Temperature:25.3°C
 Operators:DAMIN
 Test Date:2024-09-19

γ Range: 0 - 180DEG
 γ Interval: 1.0DEG
 Test System:EVERFINE GO-2000B_V1 SYSTEM V2.00.471
 Humidity:65.0%
 Test Distance:4.880m [K=1.0000]
 Remarks:

UGR(Unified Glare Rating) Table

NAME: LED Strip		TYPE: Indoor lighting					WEIGHT: 20g					
SPEC.: COB LED		DIM.: 500*3*1.9MM					SERIAL No.: 20240904007					
MFR.: EVERFINE		SUR.: 500*3MM					Shielding Angle:					
ceiling/cavity		0.7	0.7	0.5	0.5	0.3	0.7	0.7	0.5	0.5	0.3	
walls		0.5	0.3	0.5	0.3	0.3	0.5	0.3	0.5	0.3	0.3	
working plane		0.2	0.2	0.2	0.2	0.2	0.2	0.2	0.2	0.2	0.2	
Room dimensions		Viewed crosswise					Viewed endwise					
x = 2H y = 2H	2H	29.6	31.1	30.0	31.5	31.9	27.2	28.6	27.6	29.0	29.5	
	3H	32.3	33.6	32.7	34.1	34.5	28.5	29.9	29.0	30.3	30.8	
	4H	33.8	35.1	34.2	35.5	36.0	29.0	30.3	29.5	30.8	31.3	
	6H	35.4	36.6	35.9	37.1	37.6	29.4	30.6	29.8	31.1	31.6	
	8H	36.3	37.5	36.8	38.0	38.5	29.5	30.6	30.0	31.1	31.6	
	12H	37.4	38.6	37.9	39.1	39.6	29.5	30.7	30.0	31.1	31.7	
	4H	2H	30.2	31.5	30.7	31.9	32.4	28.5	29.8	28.9	30.2	30.7
		3H	33.1	34.3	33.6	34.8	35.3	30.1	31.3	30.7	31.8	32.3
		4H	34.8	35.9	35.4	36.4	37.0	30.9	31.9	31.4	32.4	33.0
		6H	36.7	37.7	37.3	38.2	38.8	31.4	32.3	31.9	32.9	33.5
		8H	37.8	38.7	38.4	39.2	39.9	31.5	32.4	32.1	33.0	33.6
		12H	39.0	39.8	39.6	40.4	41.1	31.7	32.5	32.2	33.1	33.7
	8H	4H	35.2	36.1	35.8	36.6	37.3	32.1	33.0	32.7	33.6	34.2
		6H	37.4	38.2	38.0	38.8	39.4	33.1	33.8	33.7	34.4	35.1
		8H	38.7	39.4	39.3	40.0	40.7	33.5	34.2	34.1	34.8	35.4
		12H	40.2	40.8	40.9	41.4	42.2	33.8	34.4	34.4	35.0	35.7
	12H	4H	35.2	36.0	35.8	36.6	37.2	32.5	33.3	33.1	33.9	34.6
		6H	37.5	38.2	38.2	38.8	39.5	33.8	34.5	34.4	35.1	35.7
		8H	39.0	39.6	39.6	40.2	40.9	34.4	35.0	35.0	35.6	36.3
Variations with the observer position at spacings(CIE Pub.117):												
S = 1.0H		+ 0.1 / - 0.1					+ 0.1 / - 0.1					
1.5H		+ 0.2 / - 0.3					+ 0.2 / - 0.3					
2.0H		+ 0.3 / - 0.4					+ 0.2 / - 0.4					

CIE Pub.117, 373.6 lm Total Lamp Luminous Flux Correct (8log(F/F0) = -3.4)
 Area: 0.003 m2

C Range: 0 - 360DEG
 C Interval: 15.0DEG
 Test Speed: HIGH
 Temperature:25.3°C
 Operators:DAMIN
 Test Date:2024-09-19

γ Range: 0 - 180DEG
 γ Interval: 1.0DEG
 Test System:EVERFINE GO-2000B_V1 SYSTEM V2.00.471
 Humidity:65.0%
 Test Distance:4.880m [K=1.0000]
 Remarks:

UTILIZATION FACTORS TABLE

NAME: LED Strip	TYPE: Indoor lighting	WEIGHT: 20g
SPEC.: COB LED	DIM.: 500*3*1.9MM	SERIAL No.: 20240904007
MFR.: EVERFINE	SUR.: 500*3MM	Shielding Angle:

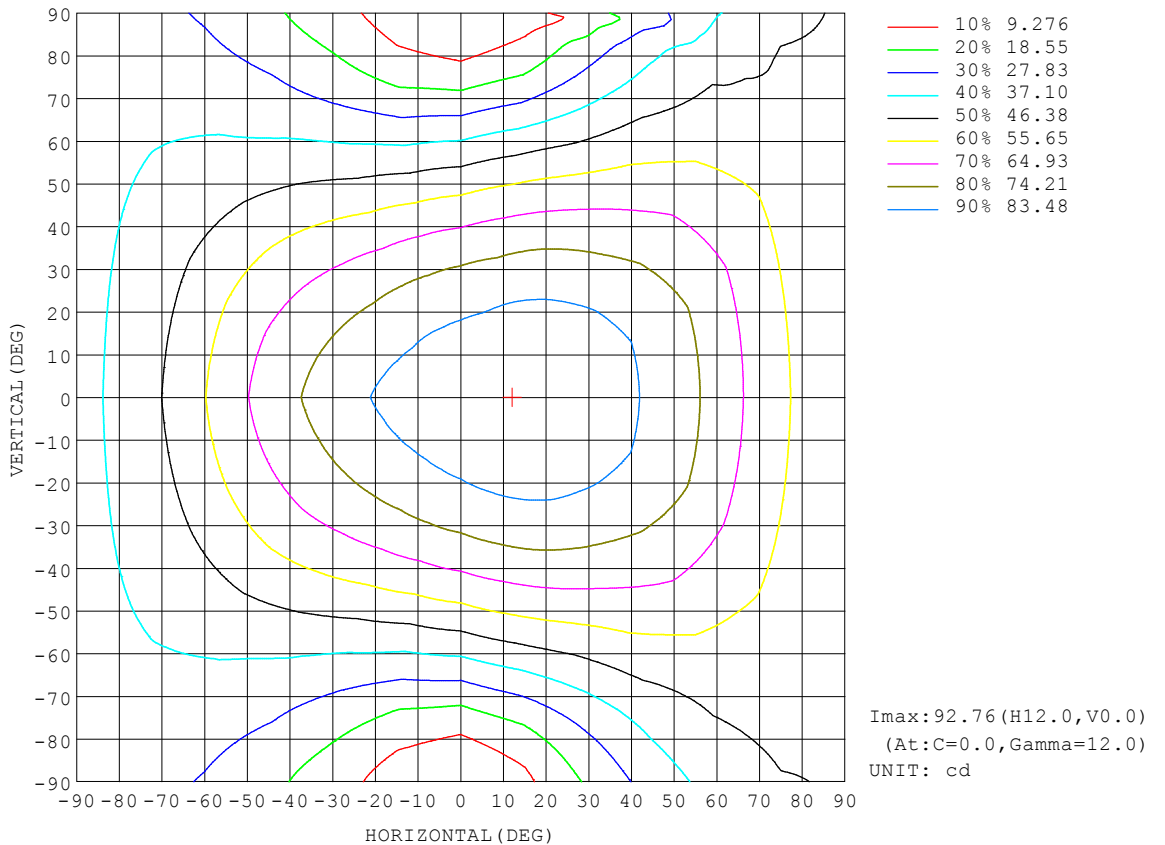
REFLECTANCE										
Ceiling	0.8	0.8	0.8	0.7	0.7	0.7	0.5	0.5	0.5	0
Walls	0.7	0.5	0.3	0.7	0.5	0.3	0.7	0.5	0.3	0
Working plane	0.2	0.2	0.2	0.2	0.2	0.2	0.2	0.2	0.2	0
ROOM INDEX	UTILIZATION FACTORS (PERCENT) $k(RI) \times RCR = 5$									
k = 0.60	50	37	30	49	37	30	47	36	30	23
0.80	59	46	38	58	45	38	55	44	37	30
1.00	67	54	46	65	53	45	62	54	44	36
1.25	74	61	53	72	60	52	68	58	51	42
1.50	79	67	58	77	65	57	73	63	56	47
2.00	86	75	67	84	73	66	79	70	64	54
2.50	90	80	72	88	78	71	82	75	69	58
3.00	94	85	78	91	83	76	86	79	73	62
4.00	99	91	84	96	88	82	90	84	79	67
5.00	102	95	89	98	92	87	92	87	83	70
ROOM INDEX	UF(total)									Direct
According to DIN EN 13032-2 2004			Suspended				SHRNOM = 1.25			

C Range: 0 - 360DEG
 C Interval: 15.0DEG
 Test Speed: HIGH
 Temperature: 25.3°C
 Operators: DAMIN
 Test Date: 2024-09-19

γ Range: 0 - 180DEG
 γ Interval: 1.0DEG
 Test System: EVERFINE GO-2000B_V1 SYSTEM V2.00.471
 Humidity: 65.0%
 Test Distance: 4.880m [K=1.0000]
 Remarks:

ISOCANDELA DIAGRAM

NAME: LED Strip	TYPE: Indoor lighting	WEIGHT: 20g
SPEC.: COB LED	DIM.: 500*3*1.9MM	SERIAL No.: 20240904007
MFR.: EVERFINE	SUR.: 500*3MM	Shielding Angle:



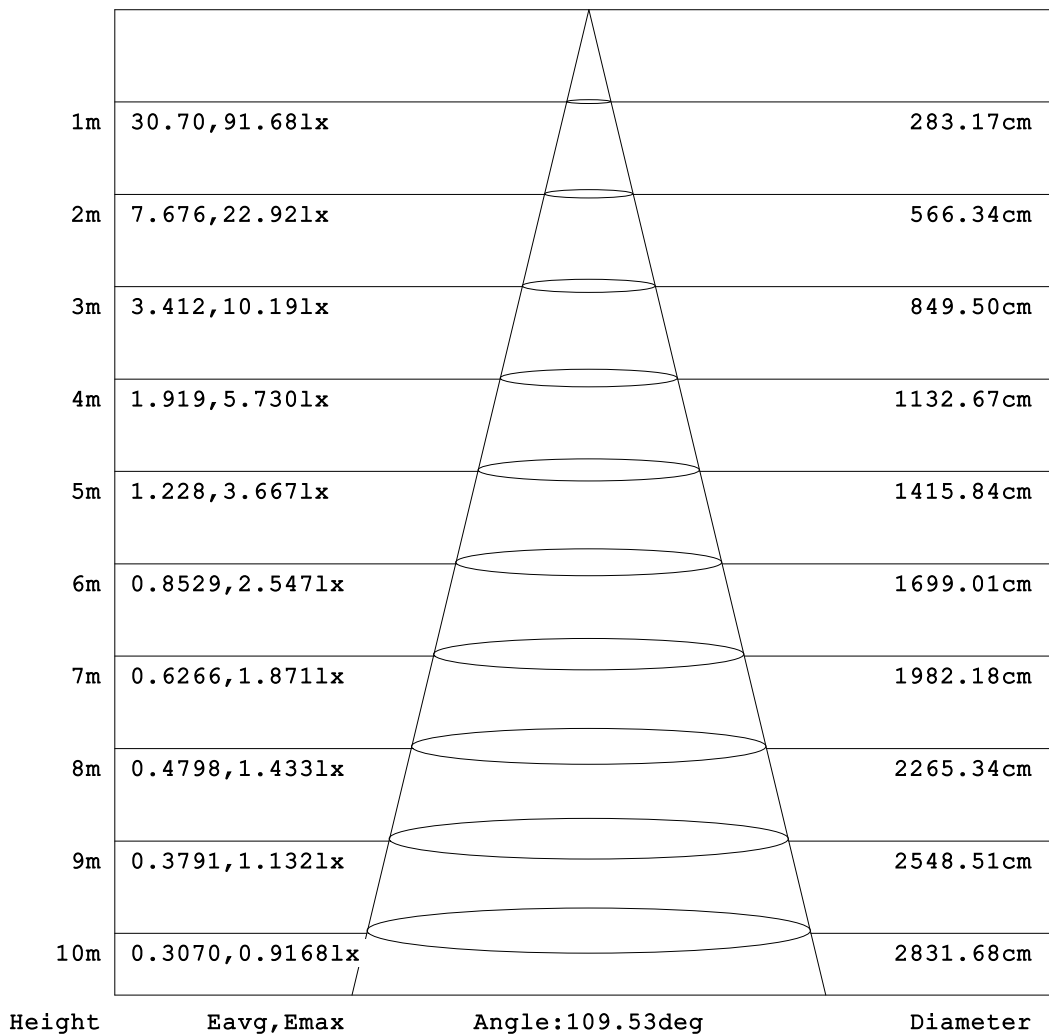
C Range: 0 - 360DEG
 C Interval: 15.0DEG
 Test Speed: HIGH
 Temperature: 25.3°C
 Operators: DAMIN
 Test Date: 2024-09-19

γ Range: 0 - 180DEG
 γ Interval: 1.0DEG
 Test System: EVERFINE GO-2000B_V1 SYSTEM V2.00.471
 Humidity: 65.0%
 Test Distance: 4.880m [K=1.0000]
 Remarks:

AAI Figure

NAME: LED Strip	TYPE: Indoor lighting	WEIGHT: 20g
SPEC.: COB LED	DIM.: 500*3*1.9MM	SERIAL No.: 20240904007
MFR.: EVERFINE	SUR.: 500*3MM	Shielding Angle:

Flux out:196.7 lm



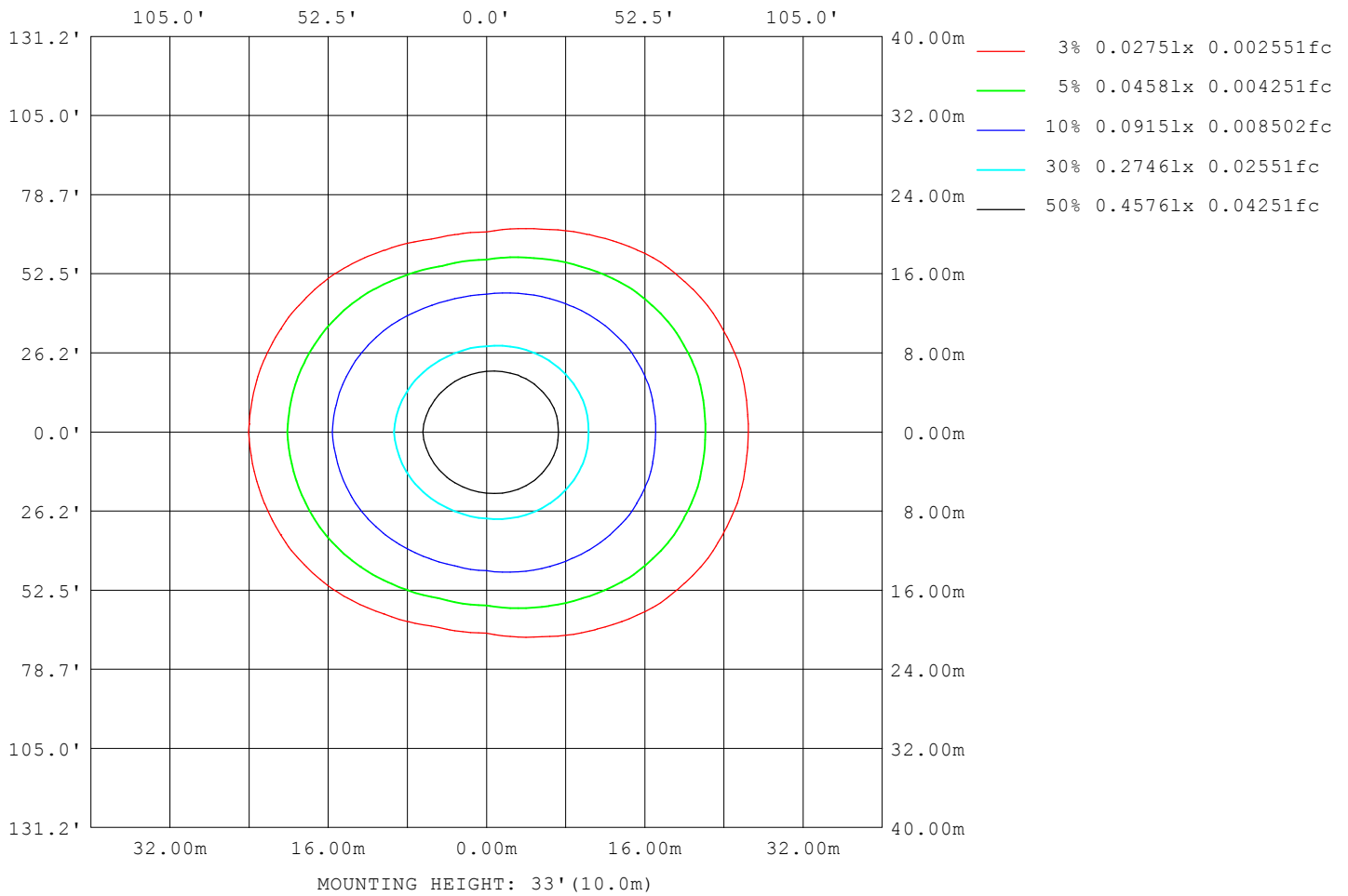
Note: The Curves indicate the illuminated area and the average illumination when the luminaire is at different distance.

C Range: 0 - 360DEG
 C Interval: 15.0DEG
 Test Speed: HIGH
 Temperature: 25.3°C
 Operators: DAMIN
 Test Date: 2024-09-19

γ Range: 0 - 180DEG
 γ Interval: 1.0DEG
 Test System: EVERFINE GO-2000B_V1 SYSTEM V2.00.471
 Humidity: 65.0%
 Test Distance: 4.880m [K=1.0000]
 Remarks:

ISOLUX DIAGRAM

NAME: LED Strip	TYPE: Indoor lighting	WEIGHT: 20g
SPEC.: COB LED	DIM.: 500*3*1.9MM	SERIAL No.: 20240904007
MFR.: EVERFINE	SUR.: 500*3MM	Shielding Angle:



C Range: 0 - 360DEG
 C Interval: 15.0DEG
 Test Speed: HIGH
 Temperature: 25.3°C
 Operators: DAMIN
 Test Date: 2024-09-19

γ Range: 0 - 180DEG
 γ Interval: 1.0DEG
 Test System: EVERFINE GO-2000B_V1 SYSTEM V2.00.471
 Humidity: 65.0%
 Test Distance: 4.880m [K=1.0000]
 Remarks:

LED Avg.L Report

NAME: LED Strip	TYPE: Indoor lighting	WEIGHT: 20g
SPEC.: COB LED	DIM.: 500*3*1.9MM	SERIAL No.: 20240904007
MFR.: EVERFINE	SUR.: 500*3MM	Shielding Angle:

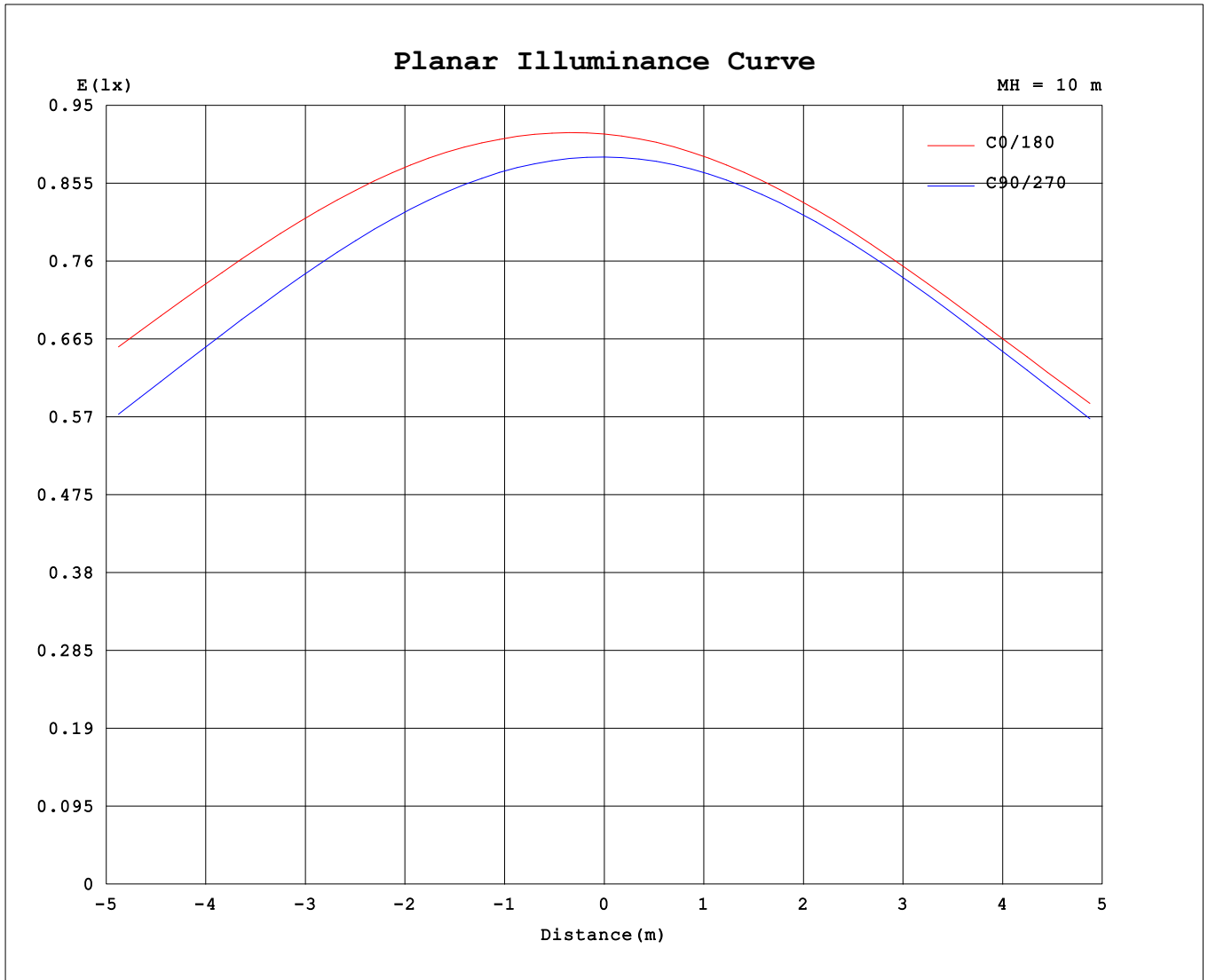
AvgL	cd/m2
L_0~180 (65) av	46027
L_0~180 (75) av	64597
L_0~180 (85) av	166185
L_90~270 (65) av	23371
L_90~270 (75) av	18278
L_90~270 (85) av	13286
L_45 (65) av	37357
L_45 (75) av	48310
L_45 (85) av	112383

Standard: GB/T 29293-2012

C Range: 0 - 360DEG
 C Interval: 15.0DEG
 Test Speed: HIGH
 Temperature:25.3°C
 Operators:DAMIN
 Test Date:2024-09-19

γ Range: 0 - 180DEG
 γ Interval: 1.0DEG
 Test System:EVERFINE GO-2000B_V1 SYSTEM V2.00.471
 Humidity:65.0%
 Test Distance:4.880m [K=1.0000]
 Remarks:

Planar Illuminance Curve



C Range: 0 - 360DEG
 C Interval: 15.0DEG
 Test Speed: HIGH
 Temperature: 25.3°C
 Operators: DAMIN
 Test Date: 2024-09-19

γ Range: 0 - 180DEG
 γ Interval: 1.0DEG
 Test System: EVERFINE GO-2000B_V1 SYSTEM V2.00.471
 Humidity: 65.0%
 Test Distance: 4.880m [K=1.0000]
 Remarks:

LUMINOUS DISTRIBUTION INTENSITY DATA

NAME: LED Strip	TYPE: Indoor lighting	WEIGHT: 20g
SPEC.: COB LED	DIM.: 500*3*1.9MM	SERIAL No.: 20240904007
MFR.: EVERFINE	SUR.: 500*3MM	Shielding Angle:

Table--1

UNIT: cd

C (DEG) \ γ (DEG)	0	15	30	45	60	75	90	105	120	135	150	165	180	195	210	225	240	255	270
0	91.5	90.9	89.9	89.5	89.3	89.0	88.7	88.7	89.0	89.4	90.1	91.0	91.5	90.9	89.9	89.5	89.3	89.0	88.7
5	92.3	91.8	90.7	90.1	89.6	89.0	88.4	88.1	88.1	88.3	88.9	89.7	90.3	89.6	88.6	88.3	88.3	88.2	88.2
10	92.7	92.3	91.0	90.2	89.2	88.3	87.4	86.8	86.6	86.6	87.1	87.9	88.7	87.8	86.8	86.5	86.6	86.7	87.0
15	92.6	92.4	90.9	89.8	88.3	86.9	85.6	84.8	84.3	84.3	84.8	85.5	86.6	85.5	84.5	84.1	84.3	84.5	85.1
20	91.9	91.8	90.2	88.7	86.7	84.8	83.0	82.0	81.5	81.5	82.0	82.8	84.1	82.8	81.8	81.2	81.3	81.6	82.4
25	90.6	90.6	88.9	87.0	84.5	81.9	79.7	78.5	78.0	78.2	79.0	79.9	81.4	79.9	78.7	77.8	77.7	78.0	79.0
30	88.8	88.9	86.9	84.6	81.7	78.5	75.7	74.4	73.9	74.6	75.7	76.9	78.6	76.9	75.4	74.0	73.6	73.7	74.9
35	86.8	86.7	84.5	81.6	78.1	74.4	71.1	69.6	69.4	70.7	72.2	73.9	75.7	73.9	72.0	69.9	68.7	68.9	70.1
40	84.4	84.3	81.6	78.0	74.0	69.5	65.7	64.1	64.4	66.1	68.5	70.6	72.5	70.6	68.1	65.6	63.7	63.5	64.6
45	81.9	81.7	78.3	73.9	69.1	64.0	59.7	58.2	59.0	61.4	64.4	66.5	68.7	66.9	64.1	61.0	58.3	57.5	58.6
50	78.8	78.5	74.8	69.2	63.6	58.0	53.1	51.8	53.3	56.5	60.0	62.5	64.7	62.9	59.7	56.1	52.6	51.1	52.1
55	75.1	74.9	70.9	64.4	57.6	51.3	45.9	44.9	47.3	51.3	55.2	57.8	60.1	58.3	55.1	51.0	46.6	44.2	44.9
60	70.7	70.7	66.6	59.5	51.2	44.0	38.2	37.6	41.2	46.0	50.3	53.1	55.4	53.6	50.2	45.8	40.6	36.9	37.3
65	66.1	65.5	61.7	54.4	44.8	36.3	29.9	30.3	34.9	40.7	45.4	48.4	50.7	48.9	45.3	40.6	34.6	29.6	29.3
70	61.6	60.9	56.7	49.2	38.7	28.6	21.9	23.2	29.2	35.9	41.0	44.1	46.4	44.6	40.8	35.5	29.0	22.6	21.4
75	57.4	56.5	52.0	44.0	32.8	21.3	14.4	16.9	24.3	31.5	36.9	40.7	42.9	41.1	37.0	31.2	24.0	16.4	14.0
80	53.7	52.7	47.9	39.4	27.7	15.2	8.09	11.8	20.0	27.8	33.6	37.4	39.6	37.6	33.5	27.5	19.9	11.4	7.83
85	50.5	49.4	44.5	35.6	23.6	10.5	3.60	7.72	16.2	24.2	30.2	34.2	36.4	34.2	30.0	23.8	16.1	7.62	3.35
90	47.0	45.9	40.9	31.9	20.0	7.33	1.05	5.04	13.2	21.1	27.2	31.1	33.1	31.0	26.8	20.5	12.8	4.93	0.85
95	43.2	42.1	37.2	28.8	17.6	5.65	0.45	1.97	9.63	17.9	24.0	28.1	30.1	28.1	24.1	17.8	9.89	2.00	0.43
100	39.9	38.8	33.9	25.3	13.3	2.04	0.42	0.59	2.96	9.09	15.3	20.1	22.4	20.3	16.0	8.98	3.12	0.58	0.45
105	33.5	32.5	27.0	17.9	6.64	0.69	0.43	0.54	0.93	3.03	5.74	8.57	10.0	8.62	6.03	2.96	0.89	0.56	0.48
110	24.5	23.3	17.2	9.46	2.79	0.57	0.46	0.53	0.71	1.15	2.28	3.47	3.97	3.42	2.32	1.10	0.74	0.59	0.52
115	15.5	14.0	8.94	4.28	1.27	0.57	0.52	0.57	0.67	0.83	1.09	1.49	1.77	1.51	1.11	0.88	0.73	0.63	0.58
120	7.36	6.38	4.37	2.29	0.76	0.60	0.57	0.62	0.68	0.79	0.91	1.00	1.07	1.04	0.94	0.85	0.75	0.68	0.64
125	3.96	3.47	2.54	1.20	0.71	0.64	0.62	0.67	0.71	0.80	0.88	0.94	0.98	0.98	0.93	0.86	0.78	0.73	0.69
130	2.38	2.11	1.39	0.84	0.71	0.69	0.68	0.72	0.75	0.83	0.88	0.93	0.97	0.97	0.93	0.87	0.82	0.77	0.75
135	1.36	1.24	0.94	0.80	0.74	0.74	0.73	0.77	0.80	0.86	0.90	0.94	0.97	0.97	0.94	0.89	0.86	0.81	0.79
140	0.96	0.91	0.86	0.83	0.79	0.79	0.78	0.82	0.85	0.90	0.92	0.97	0.99	0.98	0.96	0.92	0.90	0.86	0.84
145	0.90	0.90	0.87	0.86	0.83	0.84	0.83	0.86	0.89	0.93	0.95	0.98	1.00	0.99	0.98	0.95	0.94	0.90	0.89
150	0.91	0.92	0.90	0.90	0.88	0.89	0.88	0.91	0.93	0.97	0.98	1.01	1.03	1.01	1.01	0.98	0.98	0.95	0.94
155	0.95	0.95	0.94	0.94	0.92	0.93	0.93	0.96	0.97	1.00	1.01	1.03	1.05	1.03	1.03	1.01	1.01	0.99	0.98
160	0.98	0.99	0.98	0.98	0.97	0.98	0.98	1.00	1.01	1.04	1.03	1.05	1.08	1.05	1.06	1.04	1.05	1.03	1.03
165	1.02	1.03	1.01	1.02	1.01	1.03	1.03	1.05	1.05	1.07	1.06	1.08	1.09	1.07	1.08	1.07	1.08	1.06	1.07
170	1.05	1.06	1.05	1.06	1.05	1.07	1.07	1.09	1.08	1.09	1.09	1.10	1.11	1.09	1.10	1.09	1.10	1.09	1.10
175	1.09	1.10	1.08	1.10	1.09	1.11	1.10	1.12	1.11	1.12	1.11	1.11	1.11	1.11	1.11	1.11	1.12	1.11	1.12
180	1.11	1.11	1.11	1.11	1.12	1.13	1.13	1.13	1.13	1.13	1.11	1.11	1.11	1.11	1.11	1.11	1.12	1.13	1.13

C Range: 0 - 360DEG
 C Interval: 15.0DEG
 Test Speed: HIGH
 Temperature: 25.3°C
 Operators: DAMIN
 Test Date: 2024-09-19

γ Range: 0 - 180DEG
 γ Interval: 1.0DEG
 Test System: EVERFINE GO-2000B_V1 SYSTEM V2.00.471
 Humidity: 65.0%
 Test Distance: 4.880m [K=1.0000]
 Remarks:

LUMINOUS DISTRIBUTION INTENSITY DATA

NAME: LED Strip	TYPE: Indoor lighting	WEIGHT: 20g
SPEC.: COB LED	DIM.: 500*3*1.9MM	SERIAL No.: 20240904007
MFR.: EVERFINE	SUR.: 500*3MM	Shielding Angle:

Table--2

UNIT: cd

C (DEG) \ γ (DEG)	285	300	315	330	345														
0	88.7	89.0	89.4	90.1	91.0														
5	88.5	89.1	89.8	90.9	91.9														
10	87.6	88.7	89.8	91.2	92.4														
15	86.0	87.6	89.2	91.1	92.5														
20	83.7	85.9	88.1	90.3	91.9														
25	80.7	83.7	86.3	88.9	90.7														
30	77.1	80.8	83.9	86.9	89.0														
35	72.9	77.2	80.8	84.4	86.9														
40	68.1	73.0	77.3	81.5	84.4														
45	62.6	67.9	73.2	78.1	81.7														
50	56.6	62.5	68.6	74.7	78.5														
55	49.9	56.6	63.8	70.8	75.0														
60	42.7	50.2	58.8	66.3	70.7														
65	35.0	43.7	53.7	61.5	66.1														
70	27.2	37.6	48.6	56.5	61.4														
75	19.9	31.8	43.4	51.7	57.0														
80	13.7	26.5	38.6	47.5	50.4														
85	8.92	19.2	34.0	42.4	48.0														
90	5.70	15.4	25.0	36.5	45.0														
95	4.90	16.4	24.0	32.6	39.0														
100	2.45	13.1	24.4	32.5	32.3														
105	0.92	8.01	18.3	27.1	32.0														
110	0.65	3.47	11.1	19.1	23.9														
115	0.62	1.67	4.94	10.6	15.2														
120	0.65	0.92	2.70	4.88	7.04														
125	0.68	0.75	1.44	2.89	3.77														
130	0.73	0.76	0.91	1.66	2.27														
135	0.78	0.80	0.82	1.01	1.28														
140	0.82	0.84	0.83	0.86	0.94														
145	0.87	0.88	0.86	0.88	0.90														
150	0.92	0.92	0.91	0.92	0.92														
155	0.96	0.97	0.95	0.95	0.95														
160	1.00	1.01	0.99	0.99	0.98														
165	1.04	1.05	1.03	1.04	1.02														
170	1.08	1.09	1.06	1.07	1.05														
175	1.11	1.11	1.09	1.10	1.09														
180	1.13	1.13	1.12	1.12	1.11														

C Range: 0 - 360DEG
 C Interval: 15.0DEG
 Test Speed: HIGH
 Temperature:25.3°C
 Operators:DAMIN
 Test Date:2024-09-19

γ Range: 0 - 180DEG
 γ Interval: 1.0DEG
 Test System:EVERFINE GO-2000B_V1 SYSTEM V2.00.471
 Humidity:65.0%
 Test Distance:4.880m [K=1.0000]
 Remarks: