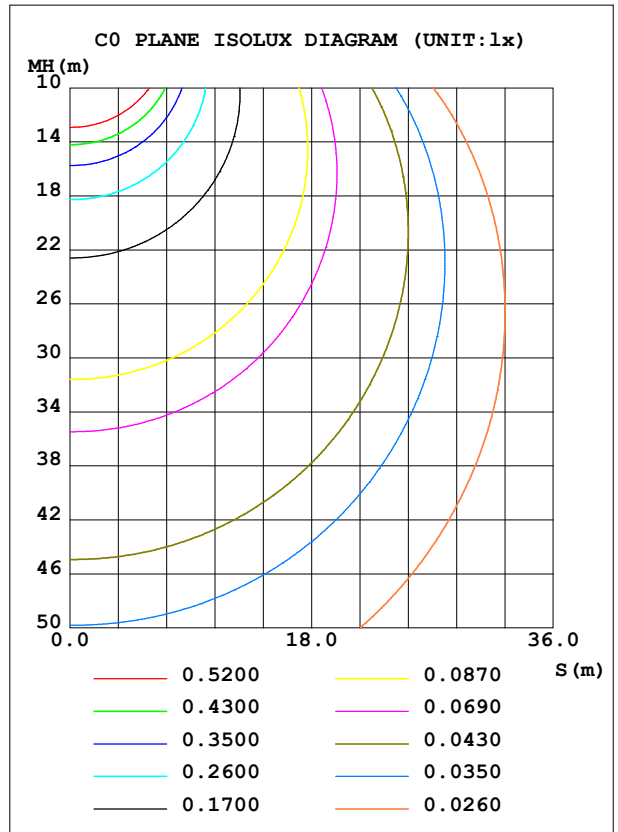
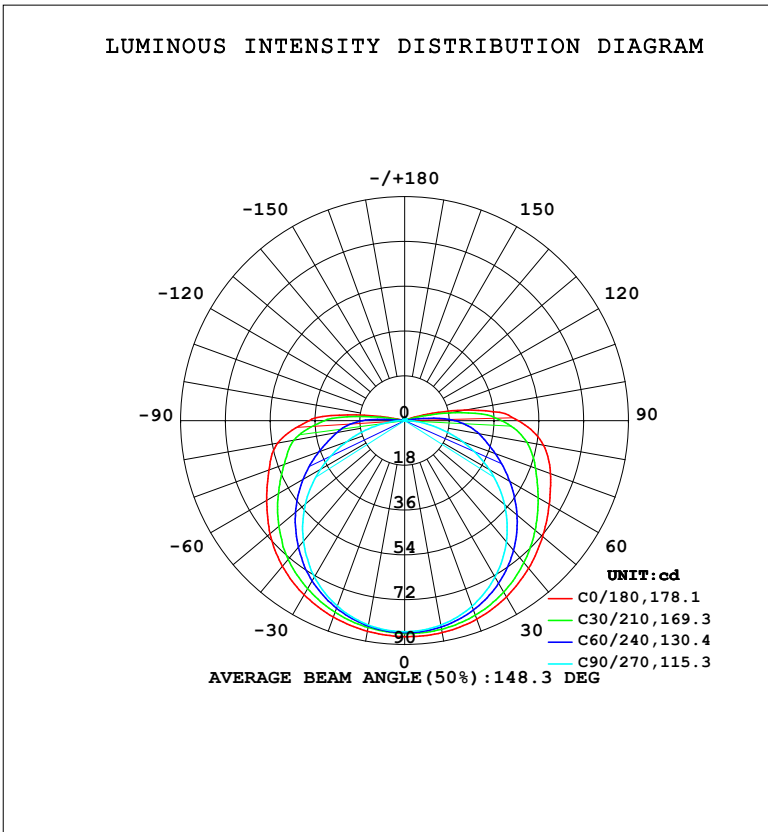


**LUMINAIRE PHOTOMETRIC TEST REPORT**

NAME: LED Strip	TYPE: Indoor lighting	WEIGHT: 20g
SPEC.: LED	DIM.: 500*5*1.2MM	SERIAL No.: 20240710014
MFR.: EVERFINE	SUR.: 500*5MM	Shielding Angle:

DATA OF LAMP		PHOTOMETRIC DATA			
NOBE24 (WCP) (05) -UR-SL-EP-GEL		Imax (cd)	86.83	S/MH (C0/180)	1.40
NOMINAL POWER (W)	3.91732	LOR (%)	100.0	S/MH (C90/270)	1.27
RATED VOLTAGE (V)	DC 24V	TOTAL FLUX (lm)	367.23	$\eta$ UP, DN (C0-180)	3.5, 47.1
NOMINAL FLUX (lm)	367.232	CIE CLASS	DIRECT	$\eta$ UP, DN (C180-360)	3.1, 46.3
LAMPS INSIDE	1	$\eta$ up (%)	6.6	CIBSE SHR NOM	1.50
TEST VOLTAGE (V)	DC 24V	$\eta$ down (%)	93.4	CIBSE SHR MAX	1.55



C Range: 0 - 360DEG  
 C Interval: 15.0DEG  
 Test Speed: HIGH  
 Temperature: 25.3°C  
 Operators: DAMIN  
 Test Date: 2024-07-22

$\gamma$  Range: 0 - 180DEG  
 $\gamma$  Interval: 1.0DEG  
 Test System: EVERFINE GO-2000B\_V1 SYSTEM V2.00.471  
 Humidity: 65.0%  
 Test Distance: 4.880m [K=1.0000]  
 Remarks:

ZONAL FLUX DIAGRAM

ZONAL FLUX DIAGRAM:

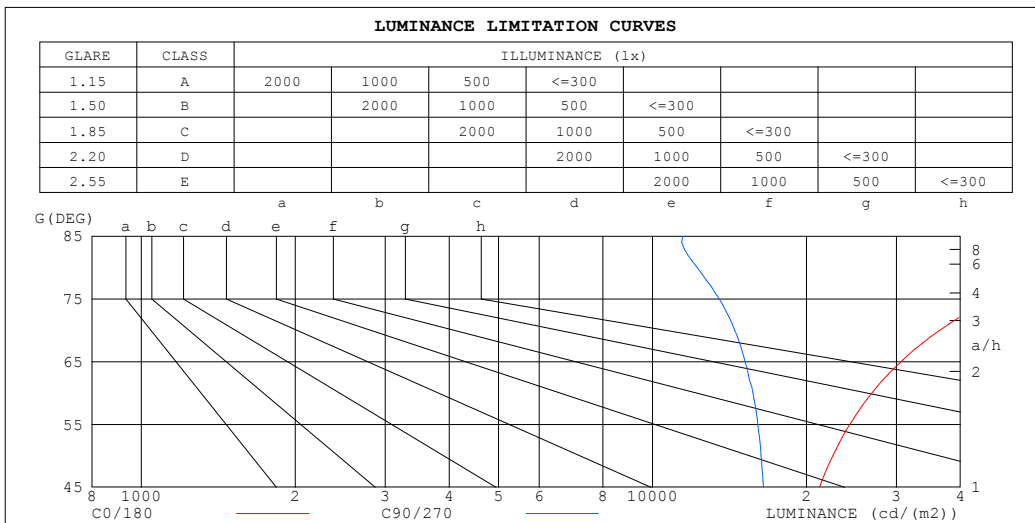
$\gamma$	C0	C45	C90	C135	C180	C225	C270	C315	$\gamma$	$\Phi$ zone	$\Phi$ total	%lum,lamp
10	86.52	84.67	83.45	84.32	85.94	83.96	83.44	84.71	0- 10	8.127	8.127	2.21,2.21
20	84.91	82.11	79.34	81.37	84.00	80.88	79.28	82.04	10- 20	23.59	31.72	8.64,8.64
30	81.81	77.65	72.68	76.70	80.81	76.03	72.58	77.45	20- 30	36.74	68.46	18.6,18.6
40	77.52	71.44	63.63	70.56	76.41	69.67	63.29	71.14	30- 40	46.32	114.8	31.3,31.3
50	72.39	63.75	52.39	62.65	70.76	62.03	52.08	63.61	40- 50	51.48	166.3	45.3,45.3
60	67.13	55.70	39.32	54.04	64.04	53.43	39.09	55.50	50- 60	52.06	218.3	59.5,59.5
70	62.36	48.14	24.78	45.59	58.04	44.85	24.84	47.98	60- 70	48.77	267.1	72.7,72.7
80	56.64	41.41	10.63	38.40	51.74	37.77	10.93	41.11	70- 80	42.99	310.1	84.4,84.4
90	45.65	30.81	1.280	25.72	38.41	25.31	1.573	13.14	80- 90	32.93	343.0	93.4,93.4
100	24.52	10.79	0.4389	1.528	9.795	2.031	0.4423	11.69	90-100	17.10	360.1	98.1,98.1
110	4.230	0.8351	0.4795	0.6239	0.9345	0.8559	0.5065	1.107	100-110	3.604	363.7	99,99
120	0.8092	0.6950	0.5854	0.6694	0.8532	0.7613	0.6147	0.7706	110-120	0.8328	364.5	99.3,99.3
130	0.8276	0.7741	0.6797	0.7509	0.8649	0.7787	0.7125	0.8101	120-130	0.6707	365.2	99.5,99.5
140	0.8648	0.8440	0.7740	0.8335	0.8917	0.8311	0.8045	0.8764	130-140	0.6288	365.8	99.6,99.6
150	0.9114	0.9103	0.8671	0.9068	0.9336	0.8986	0.8941	0.9440	140-150	0.5536	366.4	99.8,99.8
160	0.9765	0.9720	0.9498	0.9767	0.9872	0.9615	0.9732	1.017	150-160	0.4398	366.8	99.9,99.9
170	1.031	1.034	1.034	1.085	1.042	1.020	1.044	1.088	160-170	0.2881	367.1	100,100
180	1.073	1.069	1.077	1.126	1.076	1.066	1.076	1.128	170-180	0.1022	367.2	100,100
DEG	LUMINOUS INTENSITY:cd									UNIT:lm		

C Range: 0 - 360DEG  
 C Interval: 15.0DEG  
 Test Speed: HIGH  
 Temperature:25.3°C  
 Operators:DAMIN  
 Test Date:2024-07-22

$\gamma$  Range: 0 - 180DEG  
 $\gamma$  Interval: 1.0DEG  
 Test System:EVERFINE GO-2000B\_V1 SYSTEM V2.00.471  
 Humidity:65.0%  
 Test Distance:4.880m [K=1.0000]  
 Remarks:

**LUMINANCE LIMITATION CURVES**

<b>NAME:</b> LED Strip	<b>TYPE:</b> Indoor lighting	<b>WEIGHT:</b> 20g
<b>SPEC.:</b> LED	<b>DIM.:</b> 500*5*1.2MM	<b>SERIAL No.:</b> 20240710014
<b>MFR.:</b> EVERFINE	<b>SUR.:</b> 500*5MM	<b>Shielding Angle:</b>



LUMINANCE cd/(m2)		
G (DEG)	C0/180	C90/270
85	119166	11444
80	65236	12241
75	46279	13510
70	36466	14491
65	30604	15176
60	26851	15730
55	24314	16068
50	22525	16301
45	21222	16479

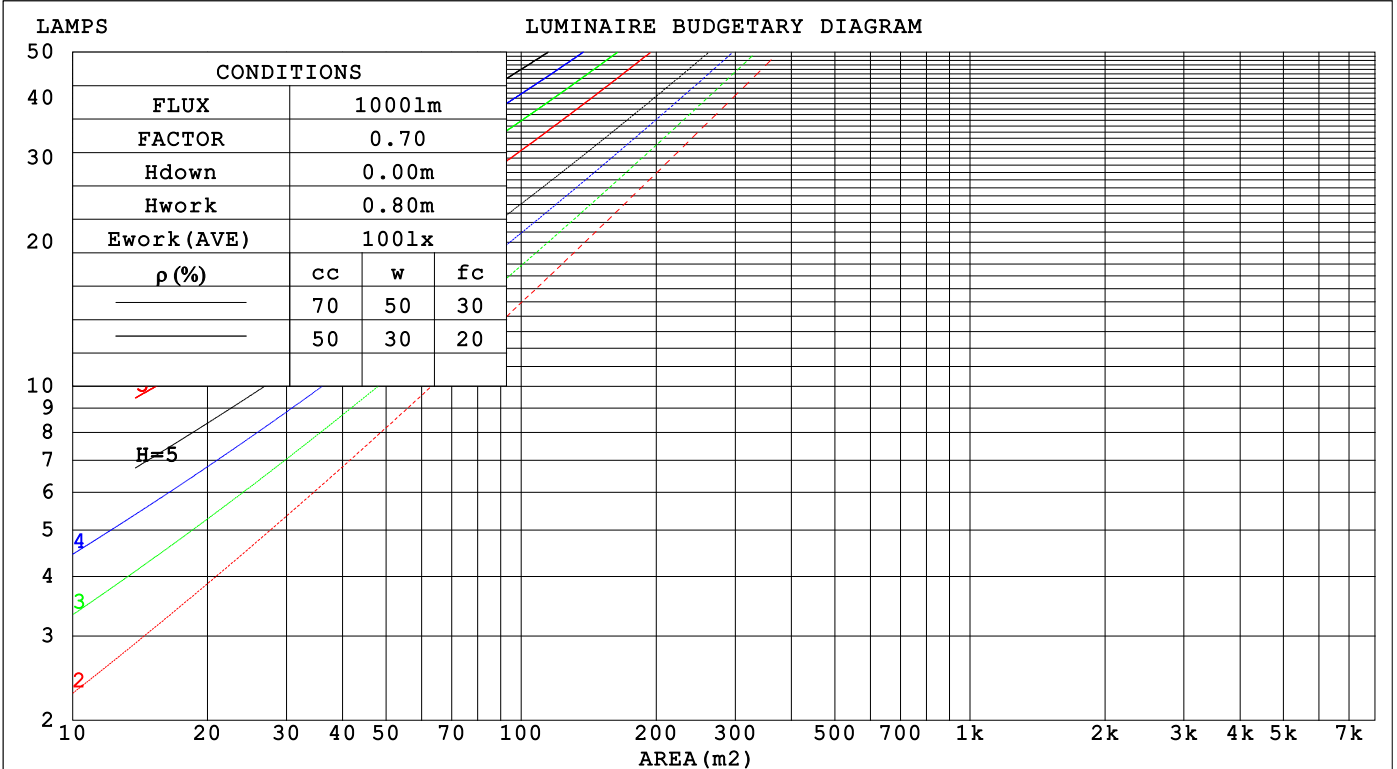
C Range: 0 - 360DEG  
 C Interval: 15.0DEG  
 Test Speed: HIGH  
 Temperature: 25.3°C  
 Operators: DAMIN  
 Test Date: 2024-07-22

γ Range: 0 - 180DEG  
 γ Interval: 1.0DEG  
 Test System: EVERFINE GO-2000B\_V1 SYSTEM V2.00.471  
 Humidity: 65.0%  
 Test Distance: 4.880m [K=1.0000]  
 Remarks:

**CU AND LUMINAIRE BUDGETARY ESTIMATE DIAGRAM**

NAME: LED Strip	TYPE: Indoor lighting	WEIGHT: 20g
SPEC.: LED	DIM.: 500*5*1.2MM	SERIAL No.: 20240710014
MFR.: EVERFINE	SUR.: 500*5MM	Shielding Angle:

pcc	80%			70%			50%			30%			10%			0
pw	50%	30%	10%	50%	30%	10%	50%	30%	10%	50%	30%	10%	50%	30%	10%	0
pfc	20%			20%			20%			20%			20%			0
RCR	RCR:Room Cavity Ratio						Coefficients of Utilization(CU)									
0.0	1.17	1.17	1.17	1.14	1.14	1.14	1.07	1.07	1.07	1.01	1.01	1.01	.96	.96	.96	.93
1.0	.97	.91	.86	.94	.89	.84	.88	.84	.80	.83	.80	.76	.78	.75	.73	.70
2.0	.82	.74	.67	.80	.72	.66	.75	.69	.63	.71	.65	.61	.66	.62	.58	.55
3.0	.71	.62	.54	.69	.60	.53	.65	.57	.51	.61	.55	.49	.58	.52	.48	.45
4.0	.62	.52	.45	.60	.51	.44	.57	.49	.43	.54	.47	.41	.51	.45	.40	.37
5.0	.55	.45	.38	.54	.44	.37	.51	.43	.36	.48	.41	.35	.45	.39	.34	.32
6.0	.49	.40	.33	.48	.39	.32	.46	.37	.31	.43	.36	.31	.41	.35	.30	.27
7.0	.45	.35	.29	.43	.35	.28	.41	.33	.28	.39	.32	.27	.37	.31	.26	.24
8.0	.41	.31	.25	.40	.31	.25	.38	.30	.24	.36	.29	.24	.34	.28	.23	.21
9.0	.37	.28	.23	.36	.28	.22	.35	.27	.22	.33	.26	.21	.31	.25	.21	.19
10.0	.34	.26	.20	.33	.25	.20	.32	.25	.20	.30	.24	.19	.29	.23	.19	.17



C Range: 0 - 360DEG  
 C Interval: 15.0DEG  
 Test Speed: HIGH  
 Temperature: 25.3°C  
 Operators: DAMIN  
 Test Date: 2024-07-22

γ Range: 0 - 180DEG  
 γ Interval: 1.0DEG  
 Test System: EVERFINE GO-2000B\_V1 SYSTEM V2.00.471  
 Humidity: 65.0%  
 Test Distance: 4.880m [K=1.0000]  
 Remarks:

WEC AND CCEC

NAME: LED Strip	TYPE: Indoor lighting	WEIGHT: 20g
SPEC.: LED	DIM.: 500*5*1.2MM	SERIAL No.: 20240710014
MFR.: EVERFINE	SUR.: 500*5MM	Shielding Angle:

$\rho_{cc}$	80%			70%			50%			30%			10%			0
$\rho_w$	50%	30%	10%	50%	30%	10%	50%	30%	10%	50%	30%	10%	50%	30%	10%	0
$\rho_{fc}$	20%			20%			20%			20%			20%			0
RCR	RCR:Room Cavity Ratio						Wall Exitance Coefficients(WEC)									
0.0																
1.0	.413	.235	.074	.404	.231	.073	.387	.222	.071	.370	.214	.069	.356	.206	.066	
2.0	.354	.194	.060	.346	.191	.059	.330	.184	.057	.316	.177	.055	.302	.171	.054	
3.0	.312	.166	.050	.305	.163	.049	.291	.158	.048	.278	.152	.047	.266	.147	.046	
4.0	.280	.145	.043	.273	.143	.042	.260	.138	.041	.249	.133	.040	.238	.129	.039	
5.0	.253	.129	.037	.247	.127	.037	.236	.123	.036	.225	.119	.035	.215	.115	.035	
6.0	.231	.116	.033	.226	.114	.033	.215	.110	.032	.206	.107	.031	.197	.104	.031	
7.0	.213	.105	.030	.208	.103	.029	.198	.100	.029	.190	.097	.028	.182	.094	.028	
8.0	.197	.096	.027	.192	.095	.027	.184	.092	.026	.176	.089	.026	.169	.087	.025	
9.0	.183	.088	.025	.179	.087	.024	.171	.085	.024	.164	.082	.024	.157	.080	.023	
10.0	.171	.082	.023	.167	.081	.023	.160	.079	.022	.154	.076	.022	.148	.074	.021	

$\rho_{cc}$	80%			70%			50%			30%			10%			0
$\rho_w$	50%	30%	10%	50%	30%	10%	50%	30%	10%	50%	30%	10%	50%	30%	10%	0
$\rho_{fc}$	20%			20%			20%			20%			20%			0
RCR	RCR:Room Cavity Ratio						Ceiling Cavity Exitance Coefficients(CCEC)									
0.0	.241	.241	.241	.206	.206	.206	.140	.140	.140	.081	.081	.081	.026	.026	.026	
1.0	.238	.206	.177	.204	.177	.152	.139	.122	.105	.080	.070	.061	.026	.023	.020	
2.0	.232	.183	.141	.198	.157	.122	.136	.109	.085	.078	.063	.050	.025	.020	.016	
3.0	.224	.166	.120	.192	.143	.104	.132	.099	.073	.076	.058	.043	.024	.019	.014	
4.0	.216	.153	.105	.185	.132	.091	.127	.092	.064	.074	.054	.038	.024	.018	.013	
5.0	.208	.143	.095	.178	.124	.083	.123	.087	.059	.071	.051	.035	.023	.017	.011	
6.0	.200	.135	.088	.172	.117	.077	.119	.082	.055	.069	.048	.032	.022	.016	.011	
7.0	.193	.128	.083	.166	.111	.073	.114	.078	.051	.066	.046	.031	.021	.015	.010	
8.0	.186	.123	.079	.160	.106	.069	.111	.075	.049	.064	.044	.029	.021	.014	.010	
9.0	.179	.118	.076	.154	.102	.067	.107	.072	.047	.062	.042	.028	.020	.014	.009	
10.0	.173	.113	.074	.149	.098	.064	.103	.069	.046	.060	.041	.027	.020	.013	.009	

C Range: 0 - 360DEG  
 C Interval: 15.0DEG  
 Test Speed: HIGH  
 Temperature:25.3°C  
 Operators:DAMIN  
 Test Date:2024-07-22

$\gamma$  Range: 0 - 180DEG  
 $\gamma$  Interval: 1.0DEG  
 Test System:EVERFINE GO-2000B\_V1 SYSTEM V2.00.471  
 Humidity:65.0%  
 Test Distance:4.880m [K=1.0000]  
 Remarks:

**UGR(Unified Glare Rating) Table**

NAME: LED Strip		TYPE: Indoor lighting				WEIGHT: 20g						
SPEC.: LED		DIM.: 500*5*1.2MM				SERIAL No.: 20240710014						
MFR.: EVERFINE		SUR.: 500*5MM				Shielding Angle:						
ceiling/cavity		0.7	0.7	0.5	0.5	0.3	0.7	0.7	0.5	0.5	0.3	
walls		0.5	0.3	0.5	0.3	0.3	0.5	0.3	0.5	0.3	0.3	
working plane		0.2	0.2	0.2	0.2	0.2	0.2	0.2	0.2	0.2	0.2	
Room dimensions		Viewed crosswise					Viewed endwise					
x = 2H y = 2H	2H	27.5	29.1	27.9	29.4	29.8	25.3	26.9	25.6	27.2	27.5	
	3H	30.5	31.9	30.9	32.3	32.7	26.9	28.4	27.3	28.7	29.1	
	4H	32.1	33.5	32.5	33.9	34.3	27.6	29.0	28.0	29.3	29.7	
	6H	34.0	35.3	34.4	35.7	36.1	28.1	29.4	28.5	29.8	30.2	
	8H	34.9	36.2	35.4	36.7	37.1	28.3	29.5	28.7	30.0	30.4	
	12H	36.1	37.3	36.5	37.7	38.2	28.4	29.6	28.8	30.1	30.5	
	4H	2H	28.2	29.6	28.6	30.0	30.4	26.6	28.0	27.0	28.4	28.8
		3H	31.4	32.6	31.8	33.0	33.5	28.5	29.7	28.9	30.2	30.6
		4H	33.2	34.4	33.7	34.8	35.3	29.4	30.5	29.9	31.0	31.5
		6H	35.3	36.3	35.8	36.8	37.3	30.1	31.1	30.6	31.6	32.1
		8H	36.4	37.4	36.9	37.9	38.4	30.4	31.3	30.9	31.8	32.4
		12H	37.7	38.6	38.2	39.1	39.6	30.6	31.5	31.1	32.0	32.6
	8H	4H	33.6	34.6	34.2	35.1	35.7	30.7	31.7	31.2	32.2	32.7
		6H	36.0	36.9	36.6	37.4	38.0	31.9	32.7	32.4	33.2	33.8
		8H	37.4	38.1	37.9	38.7	39.3	32.4	33.1	32.9	33.7	34.3
		12H	38.9	39.6	39.5	40.1	40.7	32.8	33.5	33.4	34.0	34.6
	12H	4H	33.7	34.6	34.2	35.1	35.7	31.1	32.0	31.7	32.5	33.1
		6H	36.2	36.9	36.7	37.5	38.1	32.6	33.3	33.1	33.9	34.5
		8H	37.6	38.3	38.2	38.9	39.5	33.3	34.0	33.9	34.5	35.1
Variations with the observer position at spacings(CIE Pub.117):												
S = 1.0H		+ 0.1 / - 0.1					+ 0.1 / - 0.1					
1.5H		+ 0.2 / - 0.3					+ 0.2 / - 0.2					
2.0H		+ 0.3 / - 0.4					+ 0.2 / - 0.4					

CIE Pub.117, 367.2 lm Total Lamp Luminous Flux Correct (8log(F/F0) = -3.5)  
 Area: 0.005 m2

C Range: 0 - 360DEG  
 C Interval: 15.0DEG  
 Test Speed: HIGH  
 Temperature:25.3°C  
 Operators:DAMIN  
 Test Date:2024-07-22

γ Range: 0 - 180DEG  
 γ Interval: 1.0DEG  
 Test System:EVERFINE GO-2000B\_V1 SYSTEM V2.00.471  
 Humidity:65.0%  
 Test Distance:4.880m [K=1.0000]  
 Remarks:

**UTILIZATION FACTORS TABLE**

NAME: LED Strip	TYPE: Indoor lighting	WEIGHT: 20g
SPEC.: LED	DIM.: 500*5*1.2MM	SERIAL No.: 20240710014
MFR.: EVERFINE	SUR.: 500*5MM	Shielding Angle:

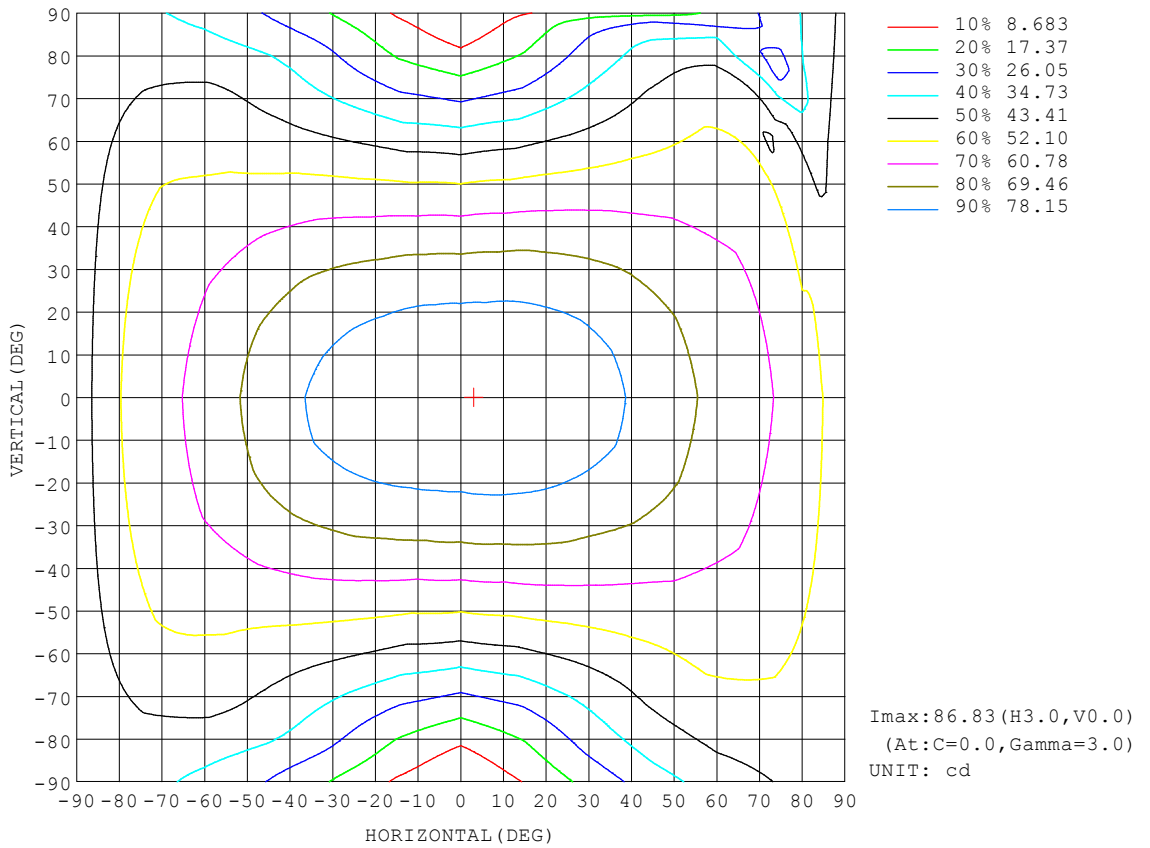
REFLECTANCE										
Ceiling	0.8	0.8	0.8	0.7	0.7	0.7	0.5	0.5	0.5	0
Walls	0.7	0.5	0.3	0.7	0.5	0.3	0.7	0.5	0.3	0
Working plane	0.2	0.2	0.2	0.2	0.2	0.2	0.2	0.2	0.2	0
ROOM INDEX	UTILIZATION FACTORS (PERCENT) $k(RI) \times RCR = 5$									
$k = 0.60$	50	37	30	49	37	30	48	36	29	23
0.80	59	46	38	58	45	37	56	44	37	29
1.00	67	54	45	65	53	45	63	55	44	36
1.25	74	61	52	72	60	52	69	58	51	42
1.50	79	67	58	77	65	57	73	63	56	47
2.00	86	75	67	84	74	66	79	71	64	54
2.50	91	80	72	88	79	71	83	75	69	59
3.00	94	85	77	92	83	76	87	79	74	63
4.00	99	91	84	96	89	83	91	85	80	68
5.00	102	95	89	99	93	87	93	88	84	72
ROOM INDEX	UF(total)									Direct
According to DIN EN 13032-2 2004			Suspended				SHRNOM = 1.25			

C Range: 0 - 360DEG  
 C Interval: 15.0DEG  
 Test Speed: HIGH  
 Temperature: 25.3°C  
 Operators: DAMIN  
 Test Date: 2024-07-22

$\gamma$  Range: 0 - 180DEG  
 $\gamma$  Interval: 1.0DEG  
 Test System: EVERFINE GO-2000B\_V1 SYSTEM V2.00.471  
 Humidity: 65.0%  
 Test Distance: 4.880m [K=1.0000]  
 Remarks:

**ISOCANDELA DIAGRAM**

NAME: LED Strip	TYPE: Indoor lighting	WEIGHT: 20g
SPEC.: LED	DIM.: 500*5*1.2MM	SERIAL No.: 20240710014
MFR.: EVERFINE	SUR.: 500*5MM	Shielding Angle:

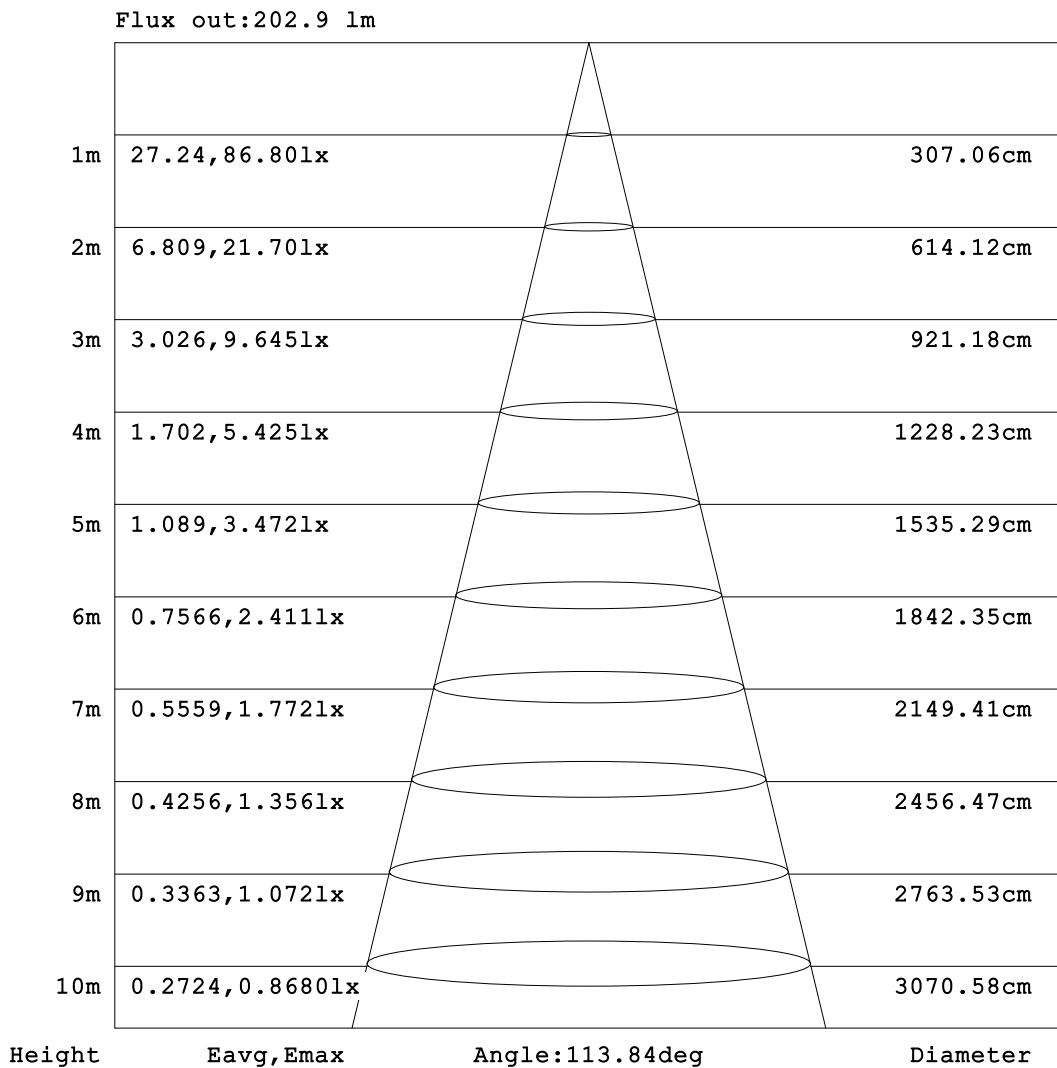


C Range: 0 - 360DEG  
 C Interval: 15.0DEG  
 Test Speed: HIGH  
 Temperature: 25.3°C  
 Operators: DAMIN  
 Test Date: 2024-07-22

γ Range: 0 - 180DEG  
 γ Interval: 1.0DEG  
 Test System: EVERFINE GO-2000B\_V1 SYSTEM V2.00.471  
 Humidity: 65.0%  
 Test Distance: 4.880m [K=1.0000]  
 Remarks:

**AAI Figure**

NAME: LED Strip	TYPE: Indoor lighting	WEIGHT: 20g
SPEC.: LED	DIM.: 500*5*1.2MM	SERIAL No.: 20240710014
MFR.: EVERFINE	SUR.: 500*5MM	Shielding Angle:



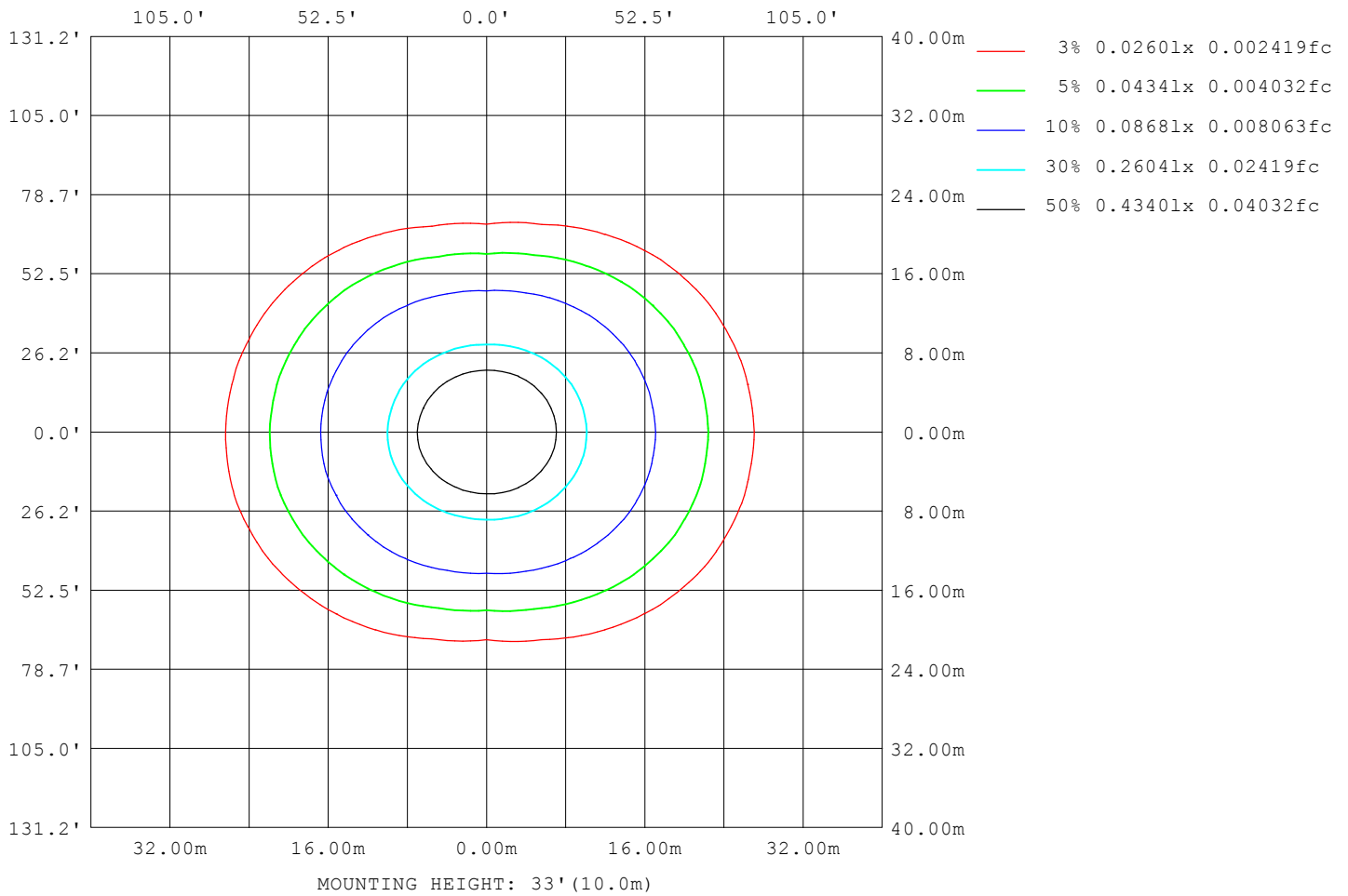
Note: The Curves indicate the illuminated area and the average illumination when the luminaire is at different distance.

C Range: 0 - 360DEG  
 C Interval: 15.0DEG  
 Test Speed: HIGH  
 Temperature: 25.3°C  
 Operators: DAMIN  
 Test Date: 2024-07-22

γ Range: 0 - 180DEG  
 γ Interval: 1.0DEG  
 Test System: EVERFINE GO-2000B\_V1 SYSTEM V2.00.471  
 Humidity: 65.0%  
 Test Distance: 4.880m [K=1.0000]  
 Remarks:

**ISOLUX DIAGRAM**

NAME: LED Strip	TYPE: Indoor lighting	WEIGHT: 20g
SPEC.: LED	DIM.: 500*5*1.2MM	SERIAL No.: 20240710014
MFR.: EVERFINE	SUR.: 500*5MM	Shielding Angle:



C Range: 0 - 360DEG  
 C Interval: 15.0DEG  
 Test Speed: HIGH  
 Temperature: 25.3°C  
 Operators: DAMIN  
 Test Date: 2024-07-22

γ Range: 0 - 180DEG  
 γ Interval: 1.0DEG  
 Test System: EVERFINE GO-2000B\_V1 SYSTEM V2.00.471  
 Humidity: 65.0%  
 Test Distance: 4.880m [K=1.0000]  
 Remarks:

LED Avg.L Report

NAME: LED Strip	TYPE: Indoor lighting	WEIGHT: 20g
SPEC.: LED	DIM.: 500*5*1.2MM	SERIAL No.: 20240710014
MFR.: EVERFINE	SUR.: 500*5MM	Shielding Angle:

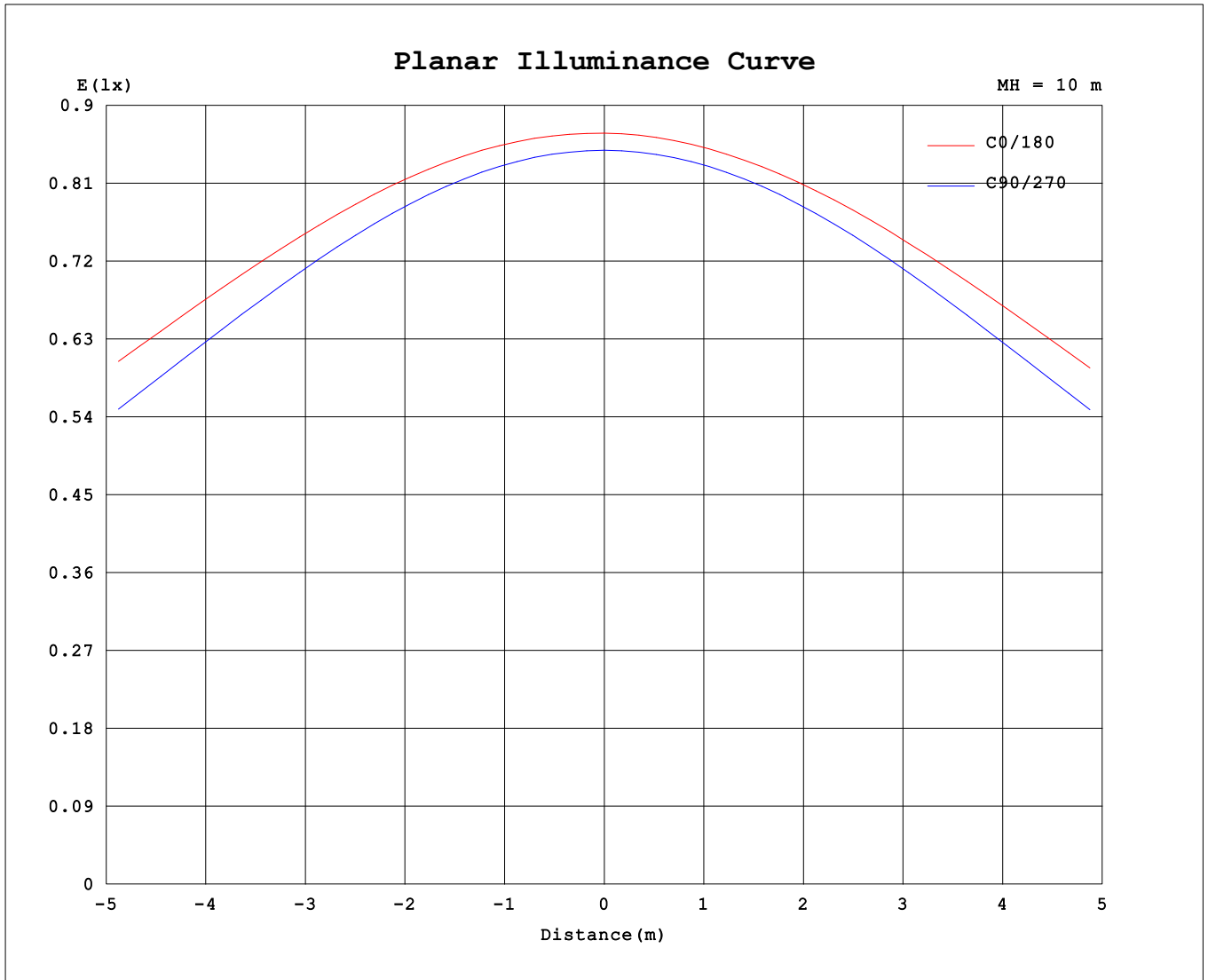
AvgL	cd/m2
L_0~180 (65) av	29716
L_0~180 (75) av	44563
L_0~180 (85) av	111834
L_90~270 (65) av	15172
L_90~270 (75) av	13590
L_90~270 (85) av	11791
L_45 (65) av	23912
L_45 (75) av	33364
L_45 (85) av	78932

Standard: GB/T 29293-2012

C Range: 0 - 360DEG  
 C Interval: 15.0DEG  
 Test Speed: HIGH  
 Temperature:25.3°C  
 Operators:DAMIN  
 Test Date:2024-07-22

γ Range: 0 - 180DEG  
 γ Interval: 1.0DEG  
 Test System:EVERFINE GO-2000B\_V1 SYSTEM V2.00.471  
 Humidity:65.0%  
 Test Distance:4.880m [K=1.0000]  
 Remarks:

**Planar Illuminance Curve**



C Range: 0 - 360DEG  
 C Interval: 15.0DEG  
 Test Speed: HIGH  
 Temperature: 25.3°C  
 Operators: DAMIN  
 Test Date: 2024-07-22

γ Range: 0 - 180DEG  
 γ Interval: 1.0DEG  
 Test System: EVERFINE GO-2000B\_V1 SYSTEM V2.00.471  
 Humidity: 65.0%  
 Test Distance: 4.880m [K=1.0000]  
 Remarks:

LUMINOUS DISTRIBUTION INTENSITY DATA

NAME: LED Strip	TYPE: Indoor lighting	WEIGHT: 20g
SPEC.: LED	DIM.: 500*5*1.2MM	SERIAL No.: 20240710014
MFR.: EVERFINE	SUR.: 500*5MM	Shielding Angle:

Table--1

UNIT: cd

C (DEG) \ γ (DEG)	0	15	30	45	60	75	90	105	120	135	150	165	180	195	210	225	240	255	270
0	86.8	86.3	85.5	85.3	85.2	85.1	84.8	84.9	85.2	85.5	86.1	86.8	86.8	86.3	85.5	85.3	85.2	85.1	84.8
5	86.8	86.4	85.5	85.2	85.0	84.8	84.5	84.5	84.8	85.1	85.8	86.5	86.5	85.9	85.2	84.9	84.8	84.7	84.5
10	86.5	86.2	85.1	84.7	84.2	83.9	83.5	83.5	83.8	84.3	85.1	86.0	85.9	85.2	84.4	84.0	83.8	83.6	83.4
15	85.9	85.6	84.4	83.6	82.9	82.3	81.7	81.8	82.3	83.1	84.1	85.1	85.1	84.3	83.4	82.7	82.3	81.8	81.7
20	84.9	84.6	83.2	82.1	81.0	80.1	79.3	79.5	80.2	81.4	82.7	83.9	84.0	83.0	82.0	80.9	80.2	79.5	79.3
25	83.6	83.2	81.6	80.1	78.5	77.2	76.3	76.6	77.7	79.3	80.9	82.4	82.6	81.5	80.2	78.6	77.6	76.5	76.2
30	81.8	81.5	79.6	77.6	75.5	73.8	72.7	73.1	74.5	76.7	78.8	80.6	80.8	79.6	78.0	76.0	74.4	73.0	72.6
35	79.7	79.4	77.2	74.7	72.0	69.7	68.4	68.9	71.0	73.7	76.4	78.5	78.8	77.5	75.6	73.0	70.8	68.9	68.1
40	77.5	77.1	74.5	71.4	68.1	65.0	63.6	64.3	67.0	70.6	73.6	76.1	76.4	74.9	72.8	69.7	66.4	64.3	63.3
45	75.0	74.6	71.6	67.6	63.7	60.0	58.3	59.3	62.6	66.6	70.4	73.3	73.7	72.1	69.6	66.0	62.0	59.1	57.9
50	72.4	71.8	68.5	63.7	59.0	54.5	52.4	53.8	58.0	62.6	67.0	70.1	70.8	69.1	66.0	62.0	57.3	53.6	52.1
55	69.7	68.7	65.2	59.8	53.9	48.6	46.1	48.0	53.0	58.4	63.3	66.8	67.3	65.8	62.4	57.8	52.3	47.6	45.8
60	67.1	65.9	62.0	55.7	48.8	42.4	39.3	41.8	47.9	54.0	59.6	63.5	64.0	62.4	58.6	53.4	47.1	41.4	39.1
65	64.7	63.3	58.9	51.8	43.7	36.0	32.1	35.6	42.6	49.7	56.0	60.3	60.9	59.2	55.0	49.0	41.9	34.9	32.1
70	62.4	60.8	56.0	48.1	38.8	29.6	24.8	29.2	37.4	45.6	52.8	57.4	58.0	56.2	51.6	44.8	36.7	28.6	24.8
75	59.9	58.2	53.2	44.9	34.3	23.6	17.5	23.2	32.6	42.0	49.8	54.8	55.4	53.6	48.6	41.2	31.8	22.6	17.7
80	56.6	55.0	49.9	41.4	30.3	18.1	10.6	17.6	28.4	38.4	46.1	50.9	51.7	49.9	45.2	37.8	27.6	17.1	10.9
85	51.9	50.3	45.2	36.8	25.8	13.5	4.99	12.6	23.4	32.6	39.7	44.5	45.5	43.7	39.2	32.1	23.2	12.3	5.29
90	45.6	44.1	39.0	30.8	20.2	9.04	1.28	7.59	16.9	25.7	32.7	37.5	38.4	36.4	32.2	25.3	17.0	7.81	1.57
95	38.4	36.8	31.1	22.8	11.8	2.33	0.49	0.79	4.04	12.3	18.8	24.0	26.4	24.1	20.1	13.1	5.67	1.29	0.47
100	24.5	23.2	18.2	10.8	3.27	0.59	0.44	0.56	0.94	1.53	4.12	7.53	9.80	7.92	5.08	2.03	1.34	0.75	0.44
105	11.6	10.6	7.26	3.22	0.73	0.50	0.43	0.47	0.64	0.88	1.29	1.67	1.28	1.22	1.22	1.16	0.87	0.57	0.46
110	4.23	3.75	1.97	0.84	0.58	0.51	0.48	0.50	0.54	0.62	0.81	1.00	0.93	0.94	0.93	0.86	0.68	0.53	0.51
115	1.23	1.12	0.83	0.66	0.59	0.56	0.53	0.55	0.57	0.63	0.71	0.77	0.86	0.85	0.83	0.77	0.68	0.56	0.56
120	0.81	0.79	0.74	0.69	0.63	0.61	0.59	0.60	0.61	0.67	0.71	0.76	0.85	0.84	0.82	0.76	0.69	0.61	0.61
125	0.81	0.81	0.78	0.74	0.68	0.66	0.63	0.64	0.65	0.71	0.74	0.78	0.86	0.84	0.83	0.76	0.71	0.66	0.66
130	0.83	0.83	0.80	0.77	0.72	0.71	0.68	0.69	0.70	0.75	0.79	0.81	0.86	0.85	0.84	0.78	0.75	0.70	0.71
135	0.85	0.86	0.83	0.81	0.77	0.75	0.73	0.74	0.75	0.80	0.83	0.84	0.88	0.86	0.85	0.81	0.78	0.75	0.76
140	0.86	0.88	0.85	0.84	0.81	0.80	0.77	0.79	0.79	0.83	0.85	0.88	0.89	0.88	0.87	0.83	0.82	0.79	0.80
145	0.88	0.91	0.89	0.88	0.85	0.84	0.82	0.83	0.84	0.87	0.88	0.93	0.91	0.90	0.89	0.86	0.87	0.84	0.85
150	0.91	0.93	0.92	0.91	0.88	0.88	0.87	0.88	0.88	0.91	0.92	0.97	0.93	0.92	0.92	0.90	0.90	0.88	0.89
155	0.94	0.96	0.94	0.94	0.92	0.92	0.91	0.92	0.92	0.94	0.96	1.00	0.96	0.94	0.95	0.93	0.93	0.92	0.94
160	0.98	0.98	0.97	0.97	0.96	0.96	0.95	0.96	0.96	0.98	0.98	1.03	0.99	0.97	0.98	0.96	0.97	0.96	0.97
165	1.00	1.01	1.00	1.00	0.99	1.01	1.00	1.02	1.00	1.01	1.01	1.06	1.02	1.00	1.00	1.00	1.01	1.00	1.01
170	1.03	1.04	1.02	1.03	1.03	1.04	1.03	1.06	1.06	1.08	1.05	1.09	1.04	1.02	1.03	1.02	1.04	1.03	1.04
175	1.05	1.06	1.05	1.06	1.05	1.07	1.06	1.08	1.09	1.12	1.12	1.14	1.06	1.04	1.05	1.05	1.06	1.05	1.07
180	1.07	1.07	1.06	1.07	1.08	1.08	1.08	1.09	1.11	1.13	1.15	1.19	1.08	1.06	1.06	1.07	1.07	1.08	1.08

C Range: 0 - 360DEG  
 C Interval: 15.0DEG  
 Test Speed: HIGH  
 Temperature: 25.3°C  
 Operators: DAMIN  
 Test Date: 2024-07-22

γ Range: 0 - 180DEG  
 γ Interval: 1.0DEG  
 Test System: EVERFINE GO-2000B\_V1 SYSTEM V2.00.471  
 Humidity: 65.0%  
 Test Distance: 4.880m [K=1.0000]  
 Remarks:

LUMINOUS DISTRIBUTION INTENSITY DATA

NAME: LED Strip	TYPE: Indoor lighting	WEIGHT: 20g
SPEC.: LED	DIM.: 500*5*1.2MM	SERIAL No.: 20240710014
MFR.: EVERFINE	SUR.: 500*5MM	Shielding Angle:

Table--2

UNIT: cd

C (DEG) \ γ (DEG)	285	300	315	330	345														
0	84.9	85.2	85.5	86.1	86.8														
5	84.6	85.0	85.3	86.0	86.8														
10	83.6	84.2	84.7	85.6	86.4														
15	82.0	82.9	83.6	84.7	85.6														
20	79.7	80.9	82.0	83.4	84.5														
25	76.9	78.4	80.0	81.7	83.0														
30	73.4	75.5	77.5	79.6	81.2														
35	69.4	72.0	74.5	77.1	79.0														
40	64.9	67.8	71.1	74.4	76.5														
45	59.8	63.4	67.5	71.4	73.9														
50	54.4	58.7	63.6	68.0	71.1														
55	48.5	53.8	59.5	64.7	68.2														
60	42.4	48.7	55.5	61.4	65.4														
65	35.9	43.7	51.6	58.3	62.7														
70	29.7	38.8	48.0	55.4	60.3														
75	23.7	34.4	44.7	52.6	56.7														
80	18.4	30.3	41.1	49.3	47.1														
85	13.8	26.2	36.1	38.4	33.2														
90	8.18	12.6	13.1	18.8	30.0														
95	2.36	12.2	21.6	25.9	27.2														
100	0.61	3.14	11.7	19.7	21.8														
105	0.54	0.84	3.04	7.60	10.7														
110	0.54	0.68	1.11	2.37	4.13														
115	0.58	0.65	0.80	1.11	1.50														
120	0.63	0.68	0.77	0.86	0.97														
125	0.68	0.73	0.78	0.86	0.94														
130	0.72	0.77	0.81	0.88	0.94														
135	0.77	0.81	0.84	0.90	0.96														
140	0.81	0.85	0.88	0.93	1.00														
145	0.85	0.89	0.91	0.96	1.04														
150	0.90	0.93	0.94	1.00	1.09														
155	0.94	0.97	0.98	1.03	1.11														
160	0.98	1.00	1.02	1.07	1.13														
165	1.01	1.03	1.05	1.11	1.15														
170	1.04	1.06	1.09	1.13	1.16														
175	1.07	1.09	1.11	1.14	1.17														
180	1.09	1.11	1.13	1.15	1.18														

C Range: 0 - 360DEG  
 C Interval: 15.0DEG  
 Test Speed: HIGH  
 Temperature:25.3°C  
 Operators:DAMIN  
 Test Date:2024-07-22

γ Range: 0 - 180DEG  
 γ Interval: 1.0DEG  
 Test System:EVERFINE GO-2000B\_V1 SYSTEM V2.00.471  
 Humidity:65.0%  
 Test Distance:4.880m [K=1.0000]  
 Remarks: