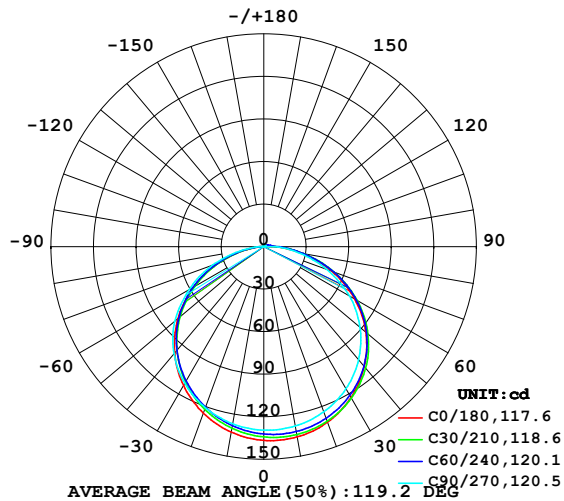


LUMINAIRE PHOTOMETRIC TEST REPORT

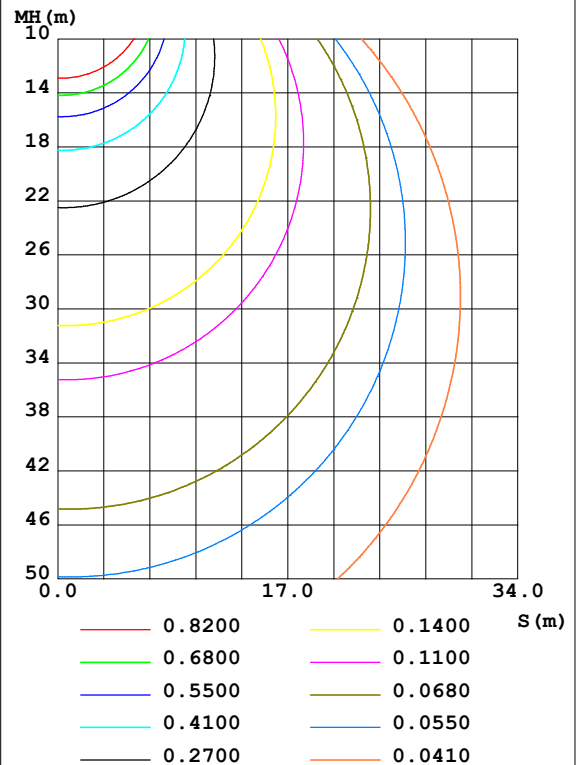
NAME: LED Strip	TYPE: Indoor lighting	WEIGHT: 20g
SPEC.: 2835 090LED	DIM.: 500*10*1mm	SERIAL No.: 20210727002
MFR.: EVERFINE	SUR.: 500*10*1mm	Shielding Angle:

DATA OF LAMP		PHOTOMETRIC DATA Eff: 194.82 lm/W			
MODEL: WCP-24 (WCP)-HR-P-CV-SE-EP		Imax(cd)	136.9	S/MH(C0/180)	1.24
NOMINAL POWER(W)	2.14629	LOR(%)	100.0	S/MH(C90/270)	1.28
RATED VOLTAGE(V)	DC 24	TOTAL FLUX(lm)	418.13	□ UP,DN(C0-180)	1.6,51.3
NOMINAL FLUX(lm)	418.134	CIE CLASS	DIRECT	□ UP,DN(C180-360)	0.9,46.1
LAMPS INSIDE	1	□ up(%)	2.5	CIBSE SHR NOM	1.25
TEST VOLTAGE(V)	DC 24	□ down(%)	97.5	CIBSE SHR MAX	1.35

LUMINOUS INTENSITY DISTRIBUTION DIAGRAM



C0 PLANE ISOLUX DIAGRAM (UNIT:lx)



C Range: 0 - 360DEG  
C Interval: 15.0DEG  
Test Speed: HIGH  
Temperature: 25.3DEG  
Operators: DAMIN  
Test Date: 2021-07-27

□ Range: 0 - 180DEG  
□ Interval: 1.0DEG  
Test System: EVERFINE GO-2000A\_V1 SYSTEM V2.00.444  
Humidity: 65.0%  
Test Distance: 5.070m [K=1.0000]  
Remarks:

### ZONAL FLUX DIAGRAM

#### ZONAL FLUX DIAGRAM:

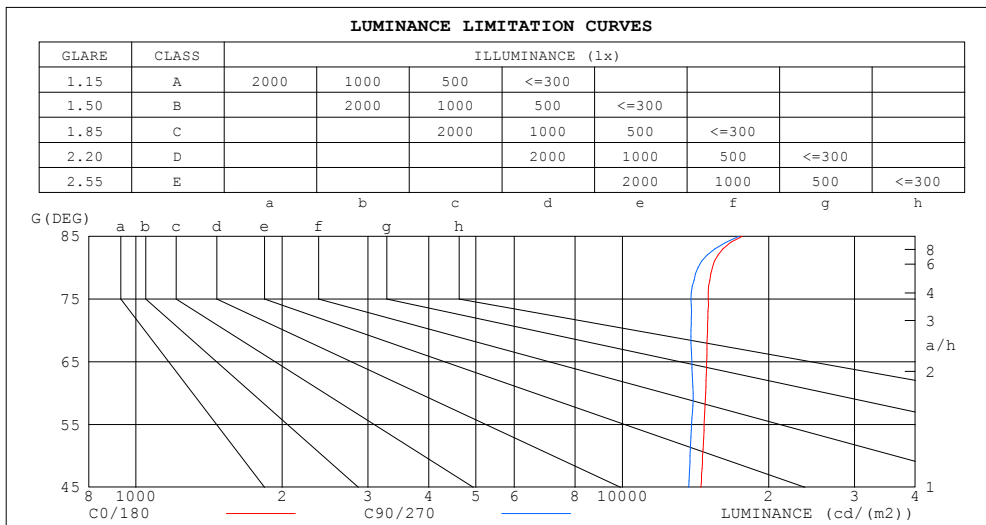
mm	C0	C45	C90	C135	C180	C225	C270	C315	mm	□ zone	□ total	%lum, lamp
10	136.2	133.7	128.4	127.7	132.8	128.9	126.8	129.2	0- 10	12.51	12.51	2.99,2.99
20	131.7	130.3	123.9	121.2	124.9	120.9	120.8	124.3	10- 20	36.04	48.55	11.6,11.6
30	122.9	122.9	115.9	111.1	113.2	109.3	111.4	113.7	20- 30	55.29	103.8	24.8,24.8
40	110.3	111.5	104.1	97.48	97.87	94.56	98.54	101.5	30- 40	67.92	171.8	41.1,41.1
50	94.02	96.07	88.61	80.03	79.14	76.91	82.00	83.67	40- 50	72.12	243.9	58.3,58.3
60	74.17	76.46	69.90	59.81	57.37	56.39	60.87	64.73	50- 60	67.12	311.0	74.4,74.4
70	51.20	53.13	47.36	37.65	34.08	33.61	38.68	41.54	60- 70	52.83	363.8	87,87
80	26.59	28.72	24.86	16.40	11.92	12.25	15.56	21.62	70- 80	31.85	395.7	94.6,94.6
90	6.919	9.632	7.138	5.070	0.8111	1.440	0.5986	4.648	80- 90	11.82	407.5	97.5,97.5
100	2.276	4.614	0.5896	4.763	0.5787	0.5835	0.5703	0.7986	90-100	3.142	410.6	98.2,98.2
110	1.110	2.303	0.6611	3.313	0.7199	0.7329	0.7332	0.6697	100-110	1.851	412.5	98.7,98.7
120	0.7940	1.849	0.7791	0.8096	0.8803	0.8922	0.8997	0.8301	110-120	1.372	413.9	99,99
130	0.8799	1.292	0.9200	0.9374	1.037	1.044	1.057	1.014	120-130	1.073	414.9	99.2,99.2
140	1.039	1.050	1.067	1.087	1.178	1.185	1.200	1.617	130-140	0.9204	415.9	99.5,99.5
150	1.194	1.205	1.209	1.228	1.307	1.309	1.325	2.414	140-150	0.8674	416.7	99.7,99.7
160	1.352	1.347	1.341	1.359	1.429	1.410	1.427	3.174	150-160	0.7395	417.5	99.8,99.8
170	1.485	1.471	1.485	1.487	1.532	1.504	1.508	4.374	160-170	0.5005	418.0	100,100
180	1.578	1.550	1.548	1.868	1.579	1.548	1.548	1.844	170-180	0.1702	418.1	100,100
DEG	LUMINOUS INTENSITY:cd									UNIT:lm		

C Range: 0 - 360DEG  
C Interval: 15.0DEG  
Test Speed: HIGH  
Temperature:25.3DEG  
Operators:DAMIN  
Test Date:2021-07-27

□ Range: 0 - 180DEG  
□ Interval: 1.0DEG  
Test System:EVERFINE GO-2000A\_V1 SYSTEM V2.00.444  
Humidity:65.0%  
Test Distance:5.070m [K=1.0000]  
Remarks:

## LUMINANCE LIMITATION CURVES

NAME: LED Strip	TYPE: Indoor lighting	WEIGHT: 20g
SPEC.: 2835 090LED	DIM.: 500*10*1mm	SERIAL No.: 20210727002
MFR.: EVERFINE	SUR.: 500*10*1mm	Shielding Angle:



LUMINANCE cd/(m2)		
G (DEG)	C0/180	C90/270
85	17630	17362
80	15311	14315
75	15026	13841
70	14969	13847
65	14908	13894
60	14834	13979
55	14737	13875
50	14627	13786
45	14515	13691

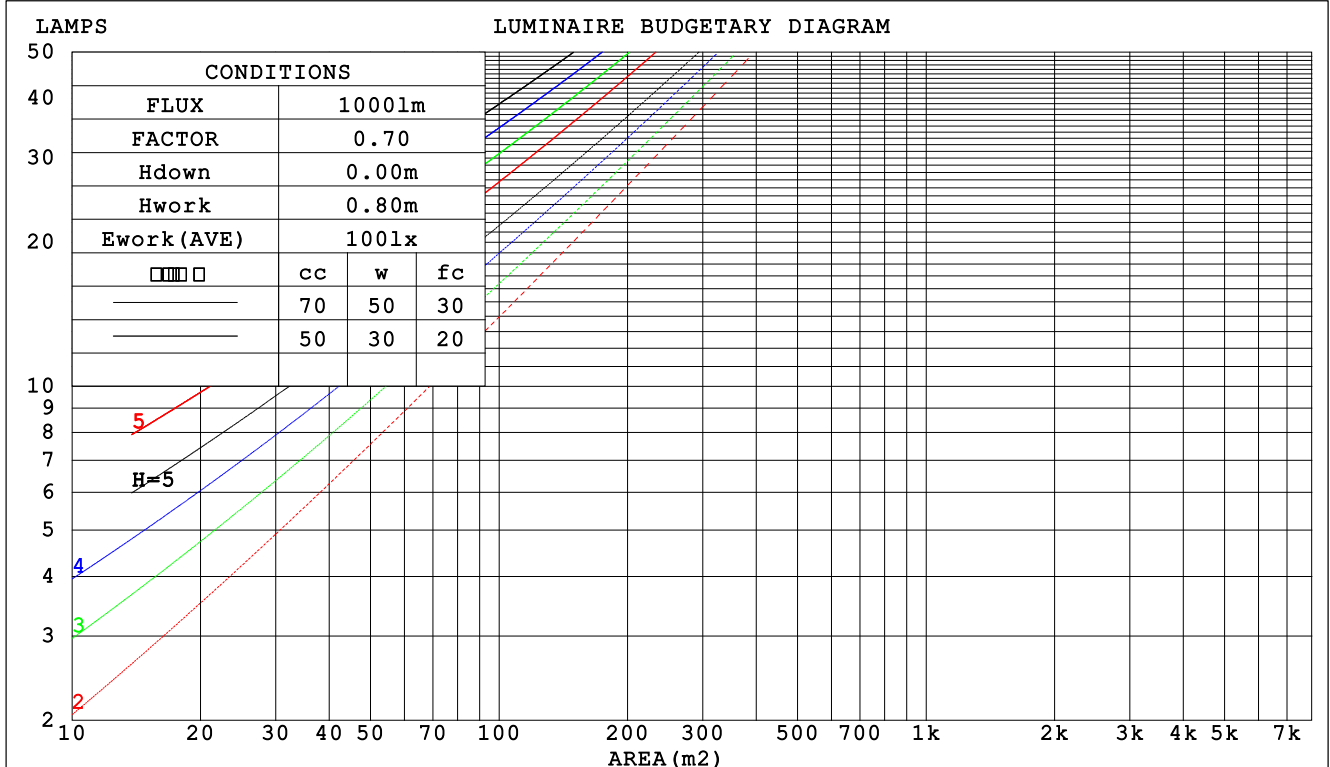
C Range: 0 - 360DEG  
 C Interval: 15.0DEG  
 Test Speed: HIGH  
 Temperature: 25.3DEG  
 Operators: DAMIN  
 Test Date: 2021-07-27

☐ Range: 0 - 180DEG  
☐ Interval: 1.0DEG  
 Test System: EVERFINE GO-2000A\_V1 SYSTEM V2.00.444  
 Humidity: 65.0%  
 Test Distance: 5.070m [K=1.0000]  
 Remarks:

CU AND LUMINAIRE BUDGETARY ESTIMATE DIAGRAM

NAME: LED Strip	TYPE: Indoor lighting	WEIGHT: 20g
SPEC.: 2835 090LED	DIM.: 500*10*1mm	SERIAL No.: 20210727002
MFR.: EVERFINE	SUR.: 500*10*1mm	Shielding Angle:

□cc	80%			70%			50%			30%			10%			0
□w	50%	30%	10%	50%	30%	10%	50%	30%	10%	50%	30%	10%	50%	30%	10%	0
□fc	20%			20%			20%			20%			20%			0
RCR	RCR:Room Cavity Ratio															



C Range: 0 - 360DEG  
 C Interval: 15.0DEG  
 Test Speed: HIGH  
 Temperature:25.3DEG  
 Operators:DAMIN  
 Test Date:2021-07-27

□ Range: 0 - 180DEG  
 □ Interval: 1.0DEG  
 Test System:EVERFINE GO-2000A\_V1 SYSTEM V2.00.444  
 Humidity:65.0%  
 Test Distance:5.070m [K=1.0000]  
 Remarks:

### WEC AND CCEC

NAME: LED Strip	TYPE: Indoor lighting	WEIGHT: 20g
SPEC.: 2835 090LED	DIM.: 500*10*1mm	SERIAL No.: 20210727002
MFR.: EVERFINE	SUR.: 500*10*1mm	Shielding Angle:

□cc	80%			70%			50%			30%			10%			0	
□w	50%	30%	10%	50%	30%	10%	50%	30%	10%	50%	30%	10%	50%	30%	10%	0	
□fc	20%			20%			20%			20%			20%			0	
RCR	RCR:Room Cavity Ratio						Wall Exitance Coefficients (WEC)										
0.0																	
1.0	.325	.185	.059	.318	.181	.058	.303	.174	.055	.289	.167	.054	.277	.160	.052		
2.0	.302	.165	.051	.295	.162	.050	.282	.157	.049	.269	.151	.047	.258	.146	.046		
3.0	.277	.147	.044	.271	.145	.044	.259	.140	.043	.248	.136	.042	.238	.132	.041		
4.0	.255	.132	.039	.249	.130	.039	.239	.127	.038	.229	.123	.037	.220	.119	.036		
5.0	.234	.119	.035	.230	.118	.034	.220	.115	.034	.212	.112	.033	.203	.109	.033		
6.0	.217	.109	.031	.212	.107	.031	.204	.105	.030	.196	.102	.030	.189	.100	.030		
7.0	.201	.100	.028	.197	.098	.028	.190	.096	.028	.183	.094	.027	.176	.092	.027		
8.0	.188	.092	.026	.184	.091	.026	.178	.089	.025	.171	.087	.025	.165	.085	.025		
9.0	.176	.085	.024	.173	.084	.024	.166	.082	.023	.161	.081	.023	.155	.079	.023		
10.0	.165	.079	.022	.162	.078	.022	.157	.077	.022	.151	.075	.021	.146	.074	.021		

□cc	80%			70%			50%			30%			10%			0
□w	50%	30%	10%	50%	30%	10%	50%	30%	10%	50%	30%	10%	50%	30%	10%	0
□fc	20%			20%			20%			20%			20%			0
RCR	RCR:Room Cavity Ratio						Ceiling Cavity Exitance Coefficients(CCEC)									
0.0	.210	.210	.210	.179	.179	.179	.122	.122	.122	.070	.070	.070	.022	.022	.022	
1.0	.201	.176	.153	.172	.151	.131	.118	.104	.091	.068	.060	.053	.022	.019	.017	
2.0	.193	.152	.116	.166	.130	.101	.113	.090	.070	.065	.052	.041	.021	.017	.013	
3.0	.186	.134	.093	.159	.116	.081	.109	.080	.057	.063	.047	.033	.020	.015	.011	
4.0	.178	.121	.077	.153	.105	.067	.105	.073	.047	.061	.043	.028	.020	.014	.009	
5.0	.171	.111	.066	.146	.096	.058	.101	.067	.041	.058	.039	.024	.019	.013	.008	
6.0	.163	.102	.059	.140	.089	.051	.097	.062	.036	.056	.037	.021	.018	.012	.007	
7.0	.156	.096	.053	.135	.083	.046	.093	.058	.033	.054	.034	.019	.017	.011	.006	
8.0	.150	.090	.049	.129	.078	.042	.089	.055	.030	.052	.032	.018	.017	.011	.006	
9.0	.144	.085	.045	.124	.074	.039	.086	.052	.028	.050	.031	.017	.016	.010	.006	
10.0	.138	.081	.042	.119	.070	.037	.083	.049	.026	.048	.029	.016	.016	.010	.005	

C Range: 0 - 360DEG  
C Interval: 15.0DEG  
Test Speed: HIGH  
Temperature:25.3DEG  
Operators:DAMIN  
Test Date:2021-07-27

☐ Range: 0 - 180DEG  
☐ Interval: 1.0DEG  
Test System:EVERFINE GO-2000A\_V1 SYSTEM V2.00.444  
Humidity:65.0%  
Test Distance:5.070m [K=1.0000]  
Remarks:

### UGR(Unified Glare Rating) Table

NAME: LED Strip					TYPE: Indoor lighting			WEIGHT:20g			
SPEC.: 2835 090LED					DIM.: 500*10*1mm			SERIAL No.: 20210727002			
MFR.: EVERFINE					SUR.: 500*10*1mm			Shielding Angle:			
ceiling/cavity	0.7	0.7	0.5	0.5	0.3	0.7	0.7	0.5	0.5	0.3	
walls	0.5	0.3	0.5	0.3	0.3	0.5	0.3	0.5	0.3	0.3	
working plane	0.2	0.2	0.2	0.2	0.2	0.2	0.2	0.2	0.2	0.2	
Room dimensions		Viewed crosswise					Viewed endwise				
x = 2H y = 2H	2H	25.7	27.2	26.0	27.5	27.8	25.5	27.0	25.8	27.3	27.6
	3H	27.6	29.0	27.9	29.2	29.5	27.3	28.7	27.7	29.0	29.3
	4H	28.4	29.7	28.7	30.0	30.3	28.1	29.4	28.5	29.7	30.0
	6H	29.1	30.3	29.4	30.6	31.0	28.8	30.0	29.1	30.3	30.7
	8H	29.3	30.5	29.7	30.9	31.2	29.0	30.3	29.4	30.6	30.9
	12H	29.6	30.7	30.0	31.1	31.4	29.3	30.5	29.7	30.8	31.2
4H	2H	26.5	27.8	26.8	28.1	28.4	26.3	27.6	26.7	27.9	28.3
	3H	28.5	29.7	28.9	30.0	30.4	28.3	29.5	28.7	29.8	30.2
	4H	29.4	30.5	29.9	30.9	31.3	29.2	30.3	29.7	30.7	31.1
	6H	30.3	31.2	30.7	31.6	32.1	30.1	31.0	30.5	31.4	31.8
	8H	30.6	31.5	31.1	31.9	32.4	30.4	31.3	30.9	31.7	32.2
	12H	31.0	31.8	31.4	32.2	32.7	30.8	31.6	31.2	32.0	32.5
8H	4H	29.8	30.7	30.3	31.1	31.6	29.7	30.5	30.1	31.0	31.4
	6H	30.9	31.6	31.4	32.1	32.6	30.7	31.4	31.2	31.9	32.4
	8H	31.4	32.0	31.9	32.5	33.0	31.2	31.9	31.7	32.3	32.8
	12H	31.8	32.4	32.4	32.9	33.4	31.7	32.3	32.2	32.8	33.3
12H	4H	29.9	30.7	30.3	31.1	31.6	29.7	30.5	30.2	31.0	31.4
	6H	31.0	31.7	31.5	32.1	32.6	30.8	31.5	31.3	32.0	32.5
	8H	31.6	32.1	32.1	32.6	33.2	31.4	32.0	31.9	32.5	33.0
Variations with the observer position at spacings(CIE Pub.117):											
S = 1.0H	+ 0.1 / - 0.2					+ 0.1 / - 0.2					
1.5H	+ 0.2 / - 0.3					+ 0.2 / - 0.3					
2.0H	+ 0.1 / - 0.4					+ 0.2 / - 0.5					

CIE Pub.117, 418.1 lm Total Lamp Luminous Flux Correct (8log(F/F0) = -3.0)  
Area: 0.01 m2

C Range: 0 - 360DEG  
C Interval: 15.0DEG  
Test Speed: HIGH  
Temperature:25.3DEG  
Operators:DAMIN  
Test Date:2021-07-27

☐ Range: 0 - 180DEG  
☐ Interval: 1.0DEG  
Test System:EVERFINE GO-2000A\_V1 SYSTEM V2.00.444  
Humidity:65.0%  
Test Distance:5.070m [K=1.0000]  
Remarks:

### UTILIZATION FACTORS TABLE

NAME: LED Strip	TYPE: Indoor lighting	WEIGHT: 20g
SPEC.: 2835 090LED	DIM.: 500*10*1mm	SERIAL No.: 20210727002
MFR.: EVERFINE	SUR.: 500*10*1mm	Shielding Angle:

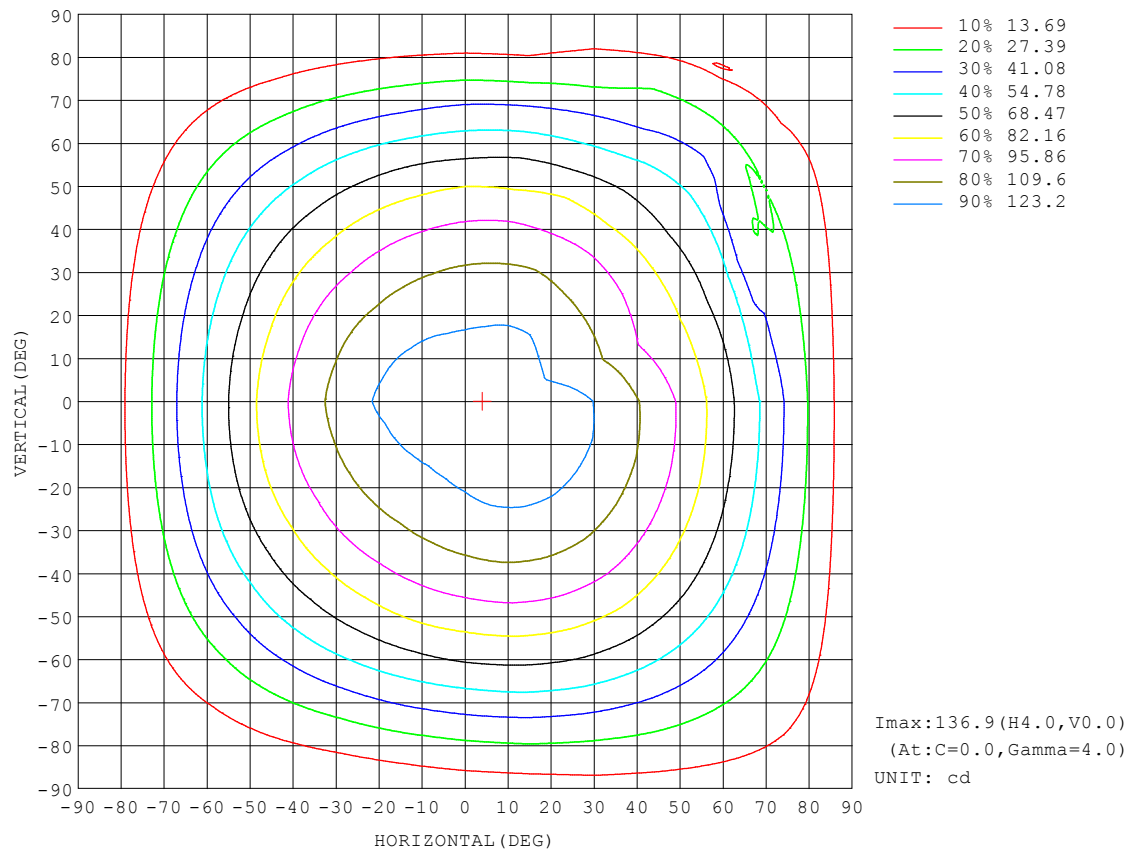
REFLECTANCE										
Ceiling	0.8	0.8	0.8	0.7	0.7	0.7	0.5	0.5	0.5	0
Walls	0.7	0.5	0.3	0.7	0.5	0.3	0.7	0.5	0.3	0
Working plane	0.2	0.2	0.2	0.2	0.2	0.2	0.2	0.2	0.2	0
ROOM INDEX	UTILIZATION FACTORS (PERCENT)    k(RI) x RCR = 5									
k = 0.60	55	44	36	55	43	36	53	43	36	30
0.80	65	53	46	64	53	46	62	52	45	38
1.00	74	62	55	72	62	54	70	63	54	46
1.25	81	70	62	79	69	62	76	67	61	53
1.50	86	76	68	84	75	68	81	73	66	58
2.00	93	84	77	91	83	76	87	80	75	66
2.50	97	89	82	95	87	81	91	84	79	70
3.00	100	93	87	98	91	86	94	88	84	74
4.00	105	99	94	102	97	92	97	93	89	79
5.00	107	102	98	105	100	96	100	96	92	82
ROOM INDEX	UF (total)									Direct
According to DIN EN 13032-2 2004										
Suspended										
SHRNOM = 1.25										

C Range: 0 - 360DEG  
 C Interval: 15.0DEG  
 Test Speed: HIGH  
 Temperature: 25.3DEG  
 Operators: DAMIN  
 Test Date: 2021-07-27

☐ Range: 0 - 180DEG  
☐ Interval: 1.0DEG  
 Test System: EVERFINE GO-2000A\_V1 SYSTEM V2.00.444  
 Humidity: 65.0%  
 Test Distance: 5.070m [K=1.0000]  
 Remarks:

**ISOCANDELA DIAGRAM**

NAME: LED Strip	TYPE: Indoor lighting	WEIGHT: 20g
SPEC.: 2835 090LED	DIM.: 500*10*1mm	SERIAL No.: 20210727002
MFR.: EVERFINE	SUR.: 500*10*1mm	Shielding Angle:



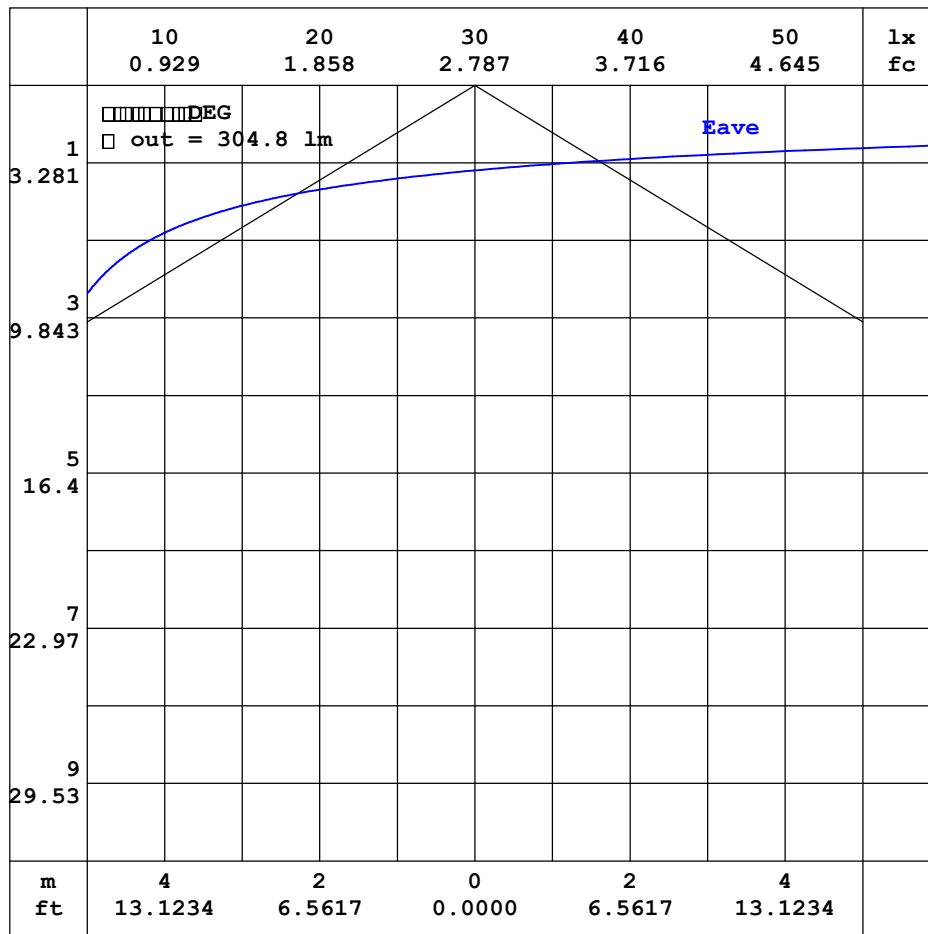
C Range: 0 - 360DEG  
 C Interval: 15.0DEG  
 Test Speed: HIGH  
 Temperature:25.3DEG  
 Operators:DAMIN  
 Test Date:2021-07-27

☐ Range: 0 - 180DEG  
☐ Interval: 1.0DEG  
 Test System:EVERFINE GO-2000A\_V1 SYSTEM V2.00.444  
 Humidity:65.0%  
 Test Distance:5.070m [K=1.0000]  
 Remarks:



AAI CURVES

NAME: LED Strip	TYPE: Indoor lighting	WEIGHT: 20g
SPEC.: 2835 090LED	DIM.: 500*10*1mm	SERIAL No.: 20210727002
MFR.: EVERFINE	SUR.: 500*10*1mm	Shielding Angle:



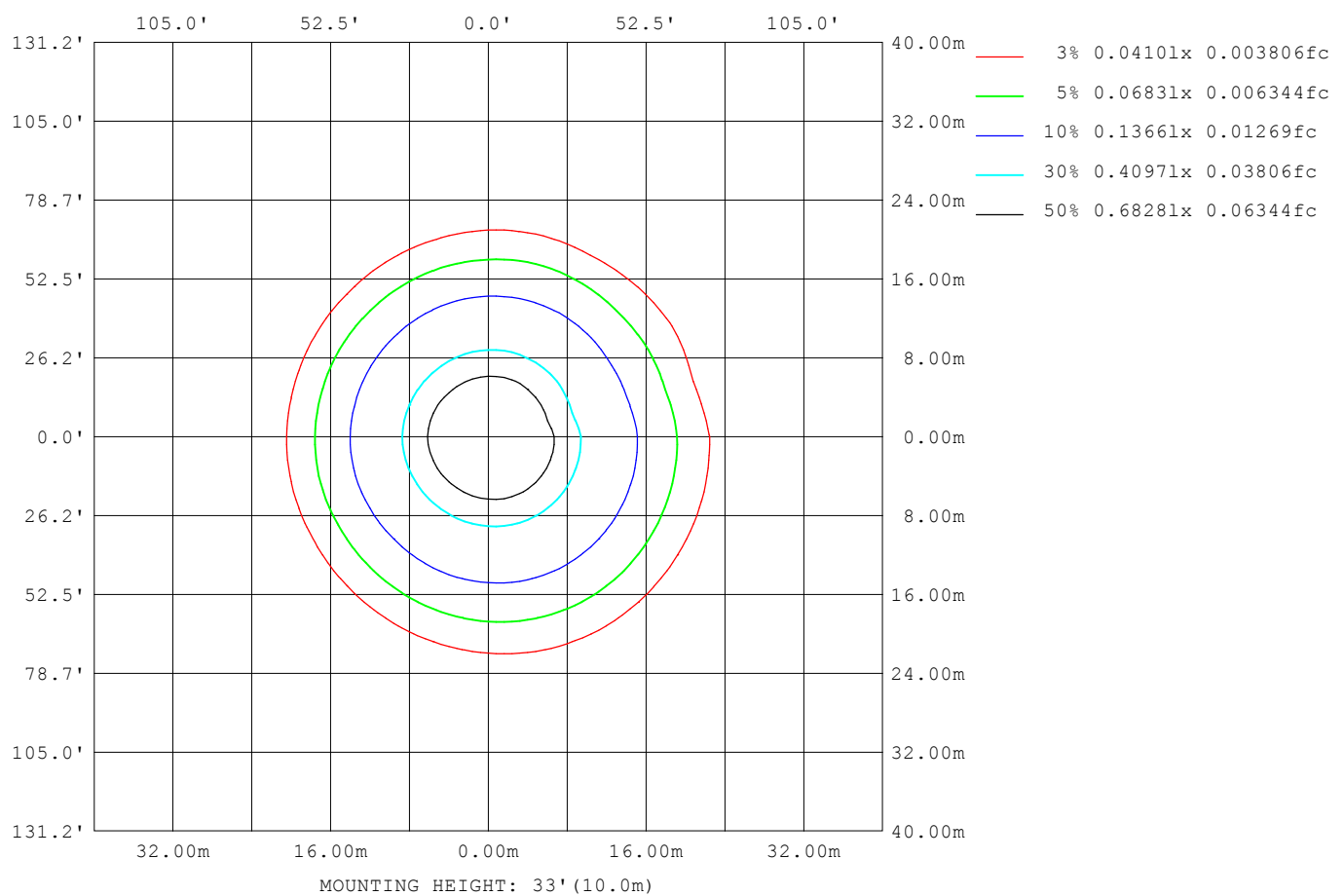
Note: The Curves indicate the illuminated area and the average illumination when the luminaire is at different distance.

C Range: 0 - 360DEG  
 C Interval: 15.0DEG  
 Test Speed: HIGH  
 Temperature: 25.3DEG  
 Operators: DAMIN  
 Test Date: 2021-07-27

□ Range: 0 - 180DEG  
 □ Interval: 1.0DEG  
 Test System: EVERFINE GO-2000A\_V1 SYSTEM V2.00.444  
 Humidity: 65.0%  
 Test Distance: 5.070m [K=1.0000]  
 Remarks:

**ISOLUX DIAGRAM**

NAME: LED Strip	TYPE: Indoor lighting	WEIGHT: 20g
SPEC.: 2835 090LED	DIM.: 500*10*1mm	SERIAL No.: 20210727002
MFR.: EVERFINE	SUR.: 500*10*1mm	Shielding Angle:



C Range: 0 - 360DEG  
 C Interval: 15.0DEG  
 Test Speed: HIGH  
 Temperature: 25.3DEG  
 Operators: DAMIN  
 Test Date: 2021-07-27

☐ Range: 0 - 180DEG  
☐ Interval: 1.0DEG  
 Test System: EVERFINE GO-2000A\_V1 SYSTEM V2.00.444  
 Humidity: 65.0%  
 Test Distance: 5.070m [K=1.0000]  
 Remarks:

### LED Avg.L Report

NAME: LED Strip	TYPE: Indoor lighting	WEIGHT: 20g
SPEC.: 2835 090LED	DIM.: 500*10*1mm	SERIAL No.: 20210727002
MFR.: EVERFINE	SUR.: 500*10*1mm	Shielding Angle:

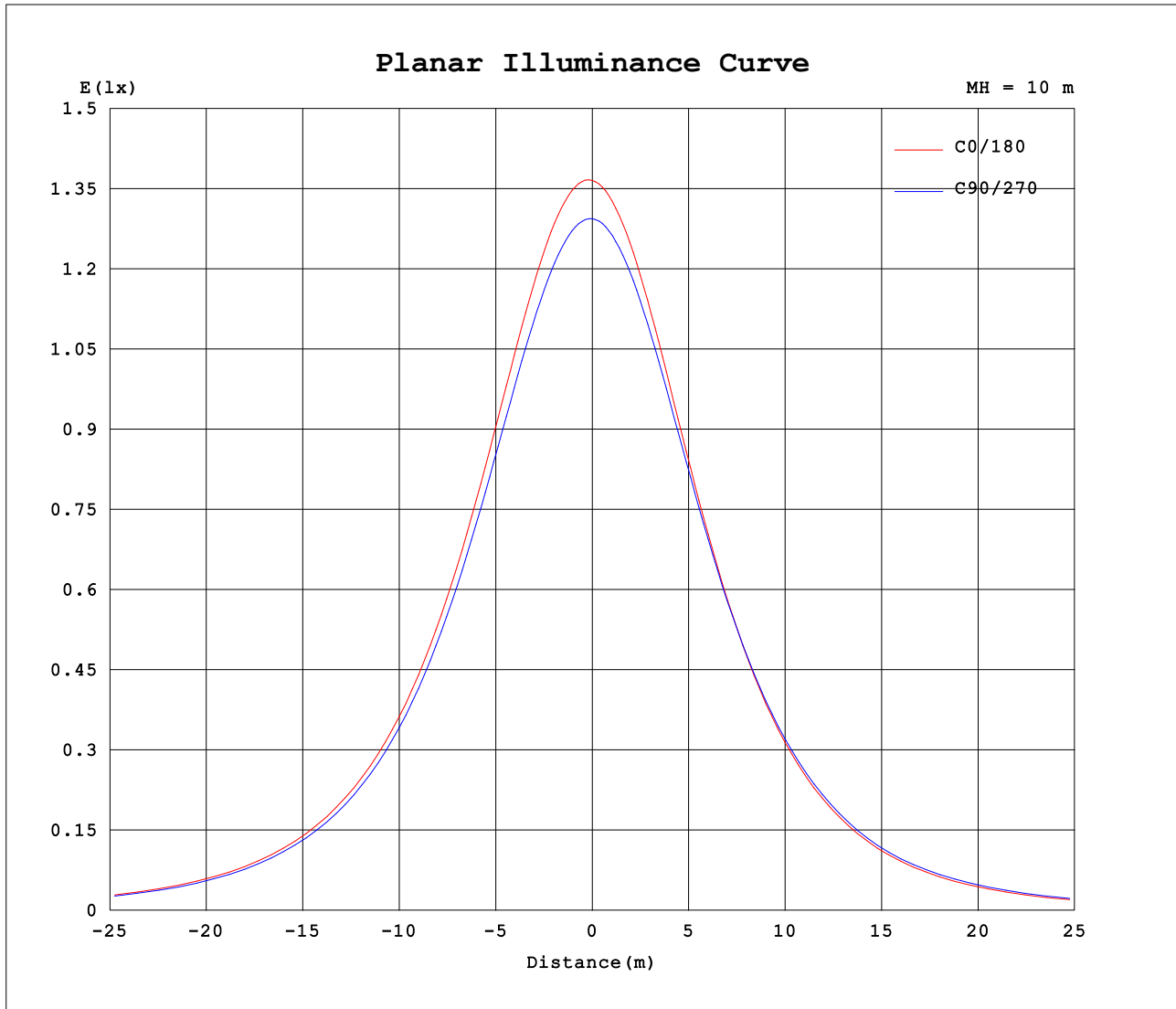
AvgL	cd/m2
L_0~180 (65) av	12881
L_0~180 (75) av	11852
L_0~180 (85) av	11196
L_90~270 (65) av	12872
L_90~270 (75) av	12060
L_90~270 (85) av	12541
L_45 (65) av	12630
L_45 (75) av	11820
L_45 (85) av	11979

Standard: GB/T 29293-2012

C Range: 0 - 360DEG  
C Interval: 15.0DEG  
Test Speed: HIGH  
Temperature:25.3DEG  
Operators:DAMIN  
Test Date:2021-07-27

☐ Range: 0 - 180DEG  
☐ Interval: 1.0DEG  
Test System:EVERFINE GO-2000A\_V1 SYSTEM V2.00.444  
Humidity:65.0%  
Test Distance:5.070m [K=1.0000]  
Remarks:

### Planar Illuminance Curve



C Range: 0 - 360DEG  
 C Interval: 15.0DEG  
 Test Speed: HIGH  
 Temperature: 25.3DEG  
 Operators: DAMIN  
 Test Date: 2021-07-27

☐ Range: 0 - 180DEG  
☐ Interval: 1.0DEG  
 Test System: EVERFINE GO-2000A\_V1 SYSTEM V2.00.444  
 Humidity: 65.0%  
 Test Distance: 5.070m [K=1.0000]  
 Remarks:

### LUMINOUS DISTRIBUTION INTENSITY DATA

NAME: LED Strip	TYPE: Indoor lighting	WEIGHT: 20g
SPEC.: 2835 090LED	DIM.: 500*10*1mm	SERIAL No.: 20210727002
MFR.: EVERFINE	SUR.: 500*10*1mm	Shielding Angle:

Table--1

UNIT: cd

C (DEG) □ (DEG)	0	15	30	45	60	75	90	105	120	135	150	165	180	195	210	225	240	255	270
0	137	136	134	133	132	130	129	129	130	130	131	132	137	136	134	133	132	130	129
5	137	136	135	134	133	131	129	129	129	129	131	132	135	134	133	132	131	129	129
10	136	136	135	134	132	130	128	128	127	128	129	130	133	131	130	129	128	127	127
15	135	135	133	132	131	129	127	125	125	125	126	127	129	128	126	125	125	124	124
20	132	132	131	130	129	127	124	122	121	121	122	123	125	123	122	121	120	120	121
25	128	129	128	127	125	123	120	118	117	117	117	118	120	118	117	116	115	116	117
30	123	124	124	123	121	119	116	113	112	111	111	112	113	111	110	109	109	110	111
35	117	118	118	118	116	114	110	108	106	105	104	105	106	104	103	102	103	104	105
40	110	112	112	111	110	108	104	101	98.7	97.5	96.7	97.3	97.9	96.1	95.2	94.6	95.4	96.7	98.5
45	103	104	104	104	103	100	96.8	93.8	91.0	89.1	88.2	88.8	88.9	87.2	86.4	86.1	87.2	88.6	90.8
50	94.0	95.5	96.0	96.1	94.7	92.3	88.6	85.7	82.3	80.0	78.9	79.4	79.1	77.5	77.1	76.9	78.2	79.6	82.0
55	84.5	85.9	86.5	86.7	85.5	83.2	79.6	76.5	72.8	70.1	68.9	69.0	68.5	67.2	66.9	67.0	68.2	69.9	71.4
60	74.2	75.6	76.1	76.5	75.5	73.1	69.9	66.0	62.5	59.8	58.1	58.0	57.4	56.3	56.3	56.4	57.7	59.2	60.9
65	63.0	64.2	64.9	65.1	64.5	62.3	58.7	55.1	51.7	48.9	47.0	46.5	45.9	45.1	45.1	45.3	46.5	47.8	50.1
70	51.2	52.4	53.0	53.1	52.6	50.8	47.4	44.0	40.4	37.6	35.4	34.7	34.1	33.3	33.5	33.6	35.0	36.2	38.7
75	38.9	40.2	40.7	40.8	40.3	38.8	35.8	32.8	29.1	26.6	24.2	23.3	22.5	21.8	22.1	22.4	23.7	25.0	26.6
80	26.6	28.0	28.3	28.7	28.2	27.4	24.9	21.7	18.6	16.4	14.1	13.1	11.9	11.5	11.9	12.3	13.4	14.6	15.6
85	15.4	16.7	17.3	17.8	17.7	16.9	15.1	12.6	10.4	8.63	6.73	5.67	4.15	4.04	4.51	4.81	5.58	6.25	6.73
90	6.92	8.19	8.94	9.63	10.1	9.08	7.14	7.05	6.23	5.07	3.96	2.80	0.81	0.96	1.24	1.44	1.72	1.80	0.60
95	3.31	4.25	5.04	5.71	6.28	5.84	0.62	4.19	5.13	4.70	3.94	3.04	0.60	0.68	0.74	0.75	0.69	0.54	0.53
100	2.28	3.08	3.77	4.61	5.03	4.11	0.59	0.66	4.89	4.76	4.18	3.41	0.58	0.59	0.59	0.58	0.58	0.57	0.57
105	1.66	2.33	2.70	3.95	4.14	3.28	0.61	0.55	1.38	4.82	4.50	3.87	0.64	0.64	0.65	0.65	0.66	0.65	0.65
110	1.11	1.64	1.81	2.30	2.83	3.23	0.66	0.62	0.71	3.31	4.82	4.32	0.72	0.72	0.74	0.73	0.74	0.73	0.73
115	0.90	1.18	1.00	2.03	2.70	3.16	0.71	0.70	0.69	0.94	4.34	4.72	0.80	0.80	0.82	0.81	0.82	0.81	0.82
120	0.79	1.00	1.36	1.85	2.55	3.09	0.78	0.78	0.77	0.81	1.63	4.40	0.88	0.88	0.90	0.89	0.90	0.89	0.90
125	0.80	0.88	1.18	1.65	2.40	2.74	0.85	0.85	0.85	0.86	1.08	3.08	0.96	0.96	0.98	0.97	0.98	0.98	0.98
130	0.88	0.88	0.99	1.29	0.90	0.92	0.92	0.93	0.92	0.94	0.94	1.26	1.04	1.04	1.05	1.04	1.05	1.05	1.06
135	0.96	0.97	0.96	0.97	0.97	1.00	1.00	1.01	1.00	1.01	1.00	1.10	1.11	1.11	1.12	1.12	1.13	1.12	1.13
140	1.04	1.05	1.04	1.05	1.05	1.06	1.07	1.08	1.08	1.09	1.07	1.08	1.18	1.17	1.19	1.19	1.19	1.19	1.20
145	1.12	1.13	1.12	1.13	1.12	1.14	1.14	1.15	1.15	1.16	1.14	1.15	1.24	1.24	1.25	1.24	1.26	1.25	1.27
150	1.19	1.21	1.20	1.20	1.19	1.21	1.21	1.22	1.22	1.23	1.21	1.21	1.31	1.30	1.31	1.31	1.31	1.31	1.33
155	1.27	1.29	1.27	1.28	1.27	1.28	1.28	1.29	1.28	1.29	1.28	1.28	1.37	1.35	1.37	1.36	1.37	1.36	1.38
160	1.35	1.36	1.34	1.35	1.33	1.34	1.34	1.35	1.35	1.36	1.34	1.35	1.43	1.41	1.42	1.41	1.42	1.41	1.43
165	1.43	1.43	1.41	1.41	1.39	1.41	1.41	1.44	1.42	1.42	1.40	1.41	1.49	1.46	1.47	1.46	1.47	1.46	1.47
170	1.49	1.49	1.47	1.47	1.45	1.47	1.49	1.52	1.50	1.49	1.46	1.47	1.53	1.50	1.51	1.50	1.51	1.49	1.51
175	1.54	1.54	1.52	1.52	1.51	1.51	1.52	1.63	1.63	1.61	1.52	1.52	1.57	1.54	1.55	1.53	1.54	1.52	1.53
180	1.58	1.57	1.55	1.55	1.55	1.54	1.55	1.72	2.12	1.87	1.70	1.62	1.58	1.56	1.56	1.55	1.55	1.53	1.55

C Range: 0 - 360DEG  
C Interval: 15.0DEG  
Test Speed: HIGH  
Temperature:25.3DEG  
Operators:DAMIN  
Test Date:2021-07-27

□ Range: 0 - 180DEG  
□ Interval: 1.0DEG  
Test System:EVERFINE GO-2000A\_V1 SYSTEM V2.00.444  
Humidity:65.0%  
Test Distance:5.070m [K=1.0000]  
Remarks:

## LUMINOUS DISTRIBUTION INTENSITY DATA

NAME: LED Strip	TYPE: Indoor lighting	WEIGHT: 20g
SPEC.: 2835 090LED	DIM.: 500*10*1mm	SERIAL No.: 20210727002
MFR.: EVERFINE	SUR.: 500*10*1mm	Shielding Angle:

Table--2

UNIT: cd

C (DEG) □ (DEG)	285	300	315	330	345														
0	129	130	130	131	132														
5	129	129	130	131	130														
10	127	128	129	130	129														
15	125	126	127	127	127														
20	122	123	124	123	122														
25	118	120	120	119	118														
30	113	115	114	115	113														
35	107	109	108	107	108														
40	100	101	102	100	99.6														
45	91.9	93.0	93.3	93.3	91.3														
50	82.5	84.8	83.7	85.3	84.4														
55	73.3	74.7	74.8	74.3	77.1														
60	63.4	63.7	64.7	64.9	66.9														
65	51.2	51.3	54.2	57.1	55.1														
70	39.1	40.4	41.5	45.6	32.5														
75	26.4	28.4	32.6	33.8	25.7														
80	15.2	19.3	21.6	17.1	18.4														
85	7.01	10.2	10.5	10.7	10.9														
90	2.91	4.00	4.65	4.85	4.55														
95	0.68	1.31	1.62	1.59	1.34														
100	0.55	0.66	0.80	0.88	0.82														
105	0.62	0.62	0.63	0.64	0.71														
110	0.70	0.69	0.67	0.68	0.79														
115	0.78	0.77	0.75	0.76	1.09														
120	0.86	0.85	0.83	0.86	1.56														
125	0.94	0.93	0.92	1.12	2.14														
130	1.02	1.01	1.01	1.55	2.76														
135	1.10	1.09	1.26	2.03	3.36														
140	1.17	1.18	1.62	2.40	3.54														
145	1.24	1.33	2.01	2.71	3.45														
150	1.32	1.62	2.41	3.08	3.72														
155	1.45	1.96	2.80	3.42	3.97														
160	1.70	2.32	3.17	3.71	4.13														
165	2.02	2.66	3.58	3.97	3.00														
170	2.33	2.99	4.37	4.13	1.79														
175	2.47	3.17	3.18	1.97	1.72														
180	1.68	2.09	1.84	1.72	1.60														

C Range: 0 - 360DEG  
C Interval: 15.0DEG  
Test Speed: HIGH  
Temperature:25.3DEG  
Operators:DAMIN  
Test Date:2021-07-27

□ Range: 0 - 180DEG  
□ Interval: 1.0DEG  
Test System:EVERFINE GO-2000A\_V1 SYSTEM V2.00.444  
Humidity:65.0%  
Test Distance:5.070m [K=1.0000]  
Remarks: